

Steady Flow of Second Grade Fluid between Two Coaxial Cylinders with Porous Walls

Amrendra Kumar

Research Scholar , Department of Mathematics, J.P.U.

ARTICLE DETAILS

Article History

Published Online: 20 January 2019

Keywords

Steady flow, Coaxial Cylinders, Annulus Porous Walls, fluids.

ABSTRACT

In the present paper we have studied about steady flow of second grade fluid between two Coaxial Cylinders with porous walls. The flow of a second grade fluid for which the inner cylinder is rotating and outer one is at rest is considered.

1. Introduction

The flow considered in this paper is for flow of a second-grade fluid in an annulus with porous walls. For a Newtonian fluid, the flow in an annulus has been investigated by Berman [1, 2] and Yuan [3]. The extensions of this flow to non-Newtonian fluids have been studied by many authors [4-6]. However, the results for non-Newtonian fluids have been given by using a perturbation method. Therefore, it is not possible to compare with the exact solution of a Newtonian fluid for all values of the cross-Reynolds number which is defined by the suction velocity at the surface of the cylinder, the radius of the cylinder, and the kinematic viscosity of the fluid. The exact solution given in this paper provides comparison with the exact solution of a Newtonian fluid for all values of the cross-Reynolds number. The non-Newtonian fluid model in this paper is that of the second grade fluid [7]. Although there are some criticisms on the application of this model, many papers have been published and a listing of some of them may be found in the literature. Furthermore, it has been shown by Walters [8] that for many types of problems in which the flow is slow enough in the viscoelastic sense, the results given by Oldroyd's constitutive equation will be substantially similar to those of fluids of the second or third grade. Therefore, it would seem reasonable to use the second or third grade models in carrying out the calculations. This is particularly so in view of the fact that the calculation is generally simpler. The constitutive equation for an incompressible second grade fluid has three coefficients. There are some restriction on these coefficients due to the Clausius-Duhem inequality and due to the assumption that the Helmholtz free energy is minimum in equilibrium. A comprehensive discussion on the restrictions for these coefficients has been given by Dunn and Fosdick [9] and Dunn and Rajagopal [10]. The sign of the material moduli is the subject of much controversy.

2. Basic Equations

The equation of motion for a fluid in the absence of body forces is

$$\rho \frac{Du}{Dt} = \nabla \cdot \sigma \tag{2.1}$$

where ρ is the density of the fluid, u is the velocity, σ is the stress tensor and D/Dt represents the material derivative. The continuity equation for the velocity is

$$\nabla \cdot u = 0 \tag{2.2}$$

Equation can be applied to all types of incompressible Newtonian and non-Newtonian fluid. The stress depends on the local properties of the fluid. The relation between the stress and the local properties of the fluid is called constitutive equation. The constitutive equation for an incompressible second grade fluid is in the following form [7].

$$\sigma = -pI + \mu A_1 + \alpha_1 A_2 + \alpha_2 A_1^2 \tag{2.3}$$

Where μ, α_1 and α_2 are material constants, and A_n represents the Rivlin-Eriksen tensor defined as [8]

$$A_0 = I, \quad A_1 = \nabla u + (\nabla u)^T \tag{2.4}$$

$$A_2 = \left(\frac{\partial}{\partial t} + u \cdot \nabla \right) A_1 + A_1 \cdot (\nabla u) + (\nabla u)^T \cdot A_1$$

where t is time, p is pressure, and I is the identity tensor. The Clausius-Duhem inequality and the condition that Helmholtz free energy is minimum in equilibrium provide the following restrictions [9, 10].

$$\mu \geq 0, \alpha_1 + \alpha_2 = 0, \alpha_1 \geq 0 \tag{2.5}$$

A comprehensive discussion on the restriction for μ, α_1 and α_2 can found in the work by Dunn and Rajagopal [10]. The sign of the material moduli α_1 and α_2 is the subject of much controversy. The experiments have not confirmed these restriction on α_1 and α_2 . Thus, the conclusion is that the fluids which have been tested are not fluids of second grade and characterized by a different constitutive structure.

Fully developed laminar flow of an incompressible fluid of second grade in an annulus with porous walls is considered. The cylindrical polar coordinates are used. The radii of the porous cylinders are a_1 and b_1 ($a_1 < b_1$). The rate of fluid withdrawal at one wall of the annulus is assumed to be equal to the rate of injection of fluid at the other wall, and that these rates are independent of axial position in annulus. The condition that the suction rate at wall is equal to the injection rate at the outer is satisfied if.

$$b_1 u_b = a_1 u_a \tag{2.6}$$

Where u_a and u_b are the radial velocities at walls of smaller and larger pipes, respectively. Equation (2.6) provides that the velocity is independent of the axial position in annulus. The velocity field is assumed to be in the following form.

$$u_r = \frac{\alpha}{r}, \quad u_\theta = u(r), \quad u_z = 0 \tag{2.7}$$

Where u_r, u_θ, u_z are components of the velocity in cylindrical polar coordinates, α is positive for injection at the inner cylinder and negative for suction at the inner one. Inserting the velocity given by into the expression of the stress, the components of the stress tensor in cylindrical polar coordinates, can be written in the following forms.

$$\begin{aligned} \sigma_{rr} &= -p - \frac{2\alpha\mu}{r^2} + \alpha_1 \left[\frac{8\alpha^2}{r^4} + 2u'^2 - 2\left(\frac{u^2}{r}\right)' \right] + \alpha_2 \left[\frac{4\alpha^2}{r^4} + \left(u' - \frac{u}{r}\right)^2 \right] \\ \sigma_{r\theta} &= \mu\left(u' - \frac{u}{r}\right) + \frac{\alpha_1\alpha}{r} \left(u'' + \frac{u'}{r} - \frac{u}{r^2} \right) \end{aligned} \tag{2.8}$$

$$\sigma_{rz} = 0$$

$$\sigma_{\theta\theta} = -p + 2\mu \frac{\alpha}{r^2} + \alpha_2 \left[4 \frac{\alpha^2}{r^4} + \left(u' - \frac{u}{r}\right)^2 \right]$$

$$\sigma_{\theta z} = 0$$

$$\sigma_{zz} = -p$$

where $\sigma_{r\theta} = \sigma_{\theta r}, \sigma_{rz} = \sigma_{zr}, \sigma_{\theta z} = \sigma_{z\theta}$; the primes denote differentiation with respect to r . Inserting the stress components and the velocity given by (2.7) into (2.1) one obtains.

$$\alpha_1 \alpha \left(\frac{u'''}{r} + 2 \frac{u''}{r^2} - \frac{u'}{r^3} + \frac{u}{r^4} \right) + \mu \left(u'' + \frac{u'}{r} - \frac{u}{r^2} \right) - \rho \frac{\alpha}{r} \left(u' + \frac{u}{r} \right) = 0 \tag{2.9}$$

and the boundary conditions are

$$u(a_1) = \Omega a_1, \quad u(b_1) = 0 \tag{2.10}$$

where a_1 is the radius of the inner cylinder and b_1 is the radius of the outer cylinder. The solution to (2.9) has three coefficients: two of them can be determined by the no-slip condition and the other can be determined by the confluent hypergeometric functions. It is expected that when the viscoelastic parameter goes to zero, the solution should given the Newtonian case leading to entirely two different kinds of flow behaviour.

3. Solution of the problem

After some manipulation (2.9) takes the form

$$xy'' + (1-x)y' + \frac{R}{2}y = 0 \tag{3.1}$$

where

$$u = \frac{g(r)}{r}, \quad g' = \frac{r}{b_1^2} y(x), \quad x = -\frac{\xi^2}{2eR}, \quad \xi = \frac{r}{b_1}, \quad R = \frac{\alpha}{\nu}, \quad \varepsilon = \frac{\alpha_1/\rho}{b_1^2} \tag{3.2}$$

where prime denotes the differentiation with respect to r, y(x) is the new function, x is the new variable, R is the cross-Reynolds number and ε is the elastic number and the boundary conditions are

$$g(a_1) = \Omega a_1^2, \quad g(b_1) = 0 \tag{3.3}$$

Equation (3.3) denotes that the inner cylinder is rotating with angular velocity Ω and the outer one is at rest. The solution of (3.1) can be written in the following form.

$$y = C_1 M\left(-\frac{R}{2}, 1, x\right) + C_2 U\left(-\frac{R}{2}, 1, x\right) \tag{3.4}$$

where M(a, b, x) and U(a, b, x) are the confluent hypergeometric function. The solution has three coefficients, therefore, one needs three boundary condition. Thus, unless an addition condition is prescribed over the condition (2.10), one has a parametric solution. However, the third coefficient can be determined by the properties of the confluent hypergeometric function. For R > 0, x becomes negative, then for x < 0, U(a, b, x) is not acceptable and therefore C₂ must be zero and (3.4) takes the form.

$$\frac{dg}{dr} = C_1 \frac{r}{b_1^2} M\left(-\frac{R}{2}, 1, -\frac{r^2/b_1}{2\varepsilon R}\right) \tag{3.5}$$

Using the identity in [7]

$$M\left(-\frac{R}{2}, 1, -\frac{r^2/b_1}{2\varepsilon R}\right) = e^{-r^2/b_1/2\varepsilon R} M\left(1 + \frac{R}{2}, 1, \frac{r^2/b_1}{2\varepsilon R}\right). \tag{3.6}$$

The integration given

$$g = C \int e^{-z} M\left(1 + \frac{R}{2}, 1, z\right) dz + D \tag{3.7}$$

where $z = (r^2/b_1^2)/2\varepsilon R$. Using the identity in [7] which is

$$\int e^{-z} M\left(1 + \frac{R}{2}, 1, z\right) dz = z e^{-z} M\left(2 + \frac{R}{2}, 2, z\right) + \text{constant}, \tag{3.8}$$

and by the boundary condition (3.3) one obtains

$$\frac{g}{\Omega a_1^2} = \frac{\xi^2 e^{-\xi^2/2\varepsilon R} M(2 + R/2, 2, \xi^2/2\varepsilon R) - e^{-1/2\varepsilon R} M(2 + R/2, 2, 1/2\varepsilon R)}{\sigma^2 e^{-\sigma^2/2\varepsilon R} M(2 + R/2, 2, \sigma^2/2\varepsilon R) - e^{-1/2\varepsilon R} M(2 + R/2, 2, 1/2\varepsilon R)} \tag{3.9}$$

where $u/\Omega a_1 = (\sigma/\xi)(g/\Omega a_1^2)$ and $\sigma = a_1/b_1$. When ε goes to zero, using the asymptotic expression of M(a, b, x),

in [7], $g/\Omega a_1^2$ becomes

$$\lim_{\varepsilon \rightarrow 0} \frac{g}{\Omega a_1^2} = \lim_{\varepsilon \rightarrow 0} \frac{(r^2/b_1^2)(\sigma^2/b_1^2/2\varepsilon R)^{R/2} - (1/2\varepsilon R)^{R/2}}{\sigma^2(\sigma^2/2\varepsilon R)^{R/2} - (1/2\varepsilon R)^{R/2}} = \frac{1 - \xi^{R+2}}{1 - \delta^{R+2}}, \tag{3.10}$$

$$\text{or } \frac{u}{\Omega a_1} = \frac{\sigma}{1 - \sigma^{2+R}} \left(\frac{1}{\xi} - \xi^{1+R} \right) \tag{3.11}$$

which is the expression of the velocity of a Newtonian fluid. The variation of $u/\Omega a_1$ with respect to $\xi = (\xi - \sigma)/(1 - \sigma)$ for various values of R and ε can be found. The value of σ is taken as 0.2 and the values of ε are taken as 0 and 1 Equation (3.9) is valid for all values of R and ε.

The variation of the azimuthal velocity for various value of the cross-Reynolds number and the elastic number

$$(\varepsilon = 0) : (\varepsilon = 1), \xi = (\xi - \sigma)/(1 - \sigma); \sigma \leq \xi \leq r/b_1, \sigma = 0.2$$

$$\lim_{a \rightarrow \infty} \frac{1}{\Gamma(b)} M(a, b, \frac{x}{a}) = x^{1/2-(1/2)b} I_{b-1}(2\sqrt{x}) \tag{3.12}$$

equation (3.9) takes the following form

$$\frac{u}{\Omega a_1} = \frac{\sigma \xi I_1(\varepsilon^{-1/2} \xi) - I_1(\omega - \varepsilon^{-1/2})}{\xi \sigma I_1(\varepsilon^{1/2} \sigma) - I_1(\varepsilon^{-1/2})} \tag{3.13}$$

where $\Gamma(x)$ is the Gamms function and $I_1(x)$ is the modified Bessel function of the first kind of order one. Since the asymptotic form of $I_1(x)$ is $e^x / \sqrt{2\pi x}$ when ε goes to zero (3.13) becomes.

$$\frac{u}{\Omega a_1} = \frac{\sigma}{\xi} \tag{3.14}$$

Equation (3.14) satisfies the boundary condition at $\xi = \sigma$, but it does not satisfy the boundary condition at $\xi = 1$. For $R < 0$, x is positive, then for $x > 0$, $M(a, b, x)$ becomes an increasing function of x , therefore, C_1 must be zero, then takes the form

$$\frac{dg}{dr} = C_2 \frac{r}{b_1^2} \left(\frac{N}{2}, 1, \frac{r^2/b_1^2}{2\varepsilon N} \right), \tag{3.15}$$

where $N = -R (> 0)$. Using the identity in [7] which is

$$\int u(a, 1, z) dz = \frac{1}{1-a} U(a-1, 0, z) + \text{constant}, \tag{3.16}$$

and by the boundary condition, the integration gives

$$\frac{g}{\Omega a_1^2} = \frac{U/2-1, 0, r^2/b_1^2/2\varepsilon R) - U(N/2-1, 0, 1/2\varepsilon N)}{U(N/2-1, 0, \sigma^2/2\varepsilon N) - U(N/2-1, 0, 1/2\varepsilon N)} \tag{3.17}$$

where $u/\Omega a_1 = (\sigma/\xi)(g/\Omega a_1^2)$. When ε goes to zero, using the asymptotic expression of $U(a, b, x)$ one obtains.

$$\frac{u}{\Omega a_1} = \frac{\sigma}{1-\sigma^{2-N}} \left(\frac{1}{\xi} - \xi^{1-N} \right) \tag{3.18}$$

which is the expression of the velocity for a Newtonian fluid. The value of σ is taken as 0.2 and the values of ε are taken as 0 and 1. Equation (3.17) is valid for all values of $-R$ and ε . When N goes to infinity, using the asymptotic expression given by

$$\lim_{a \rightarrow \infty} \Gamma(1+a-b) U\left(a, b, \frac{x}{a}\right) = 2x^{1/2-(1/2)b} K_{b-1}(2\sqrt{x}) \tag{3.19}$$

Equation (3.17) takes the following form

$$\frac{u}{\Omega a_1} = \frac{\sigma \xi K_1(\varepsilon^{-1/2} \xi) - K_1(\varepsilon^{-1/2})}{\xi \sigma K_1(\varepsilon^{-1/2} \sigma) - K_1(\varepsilon^{-1/2})} \tag{3.20}$$

where $K_1(x)$ is the modified Bessel function of the second kind of order one. Since the asymptotic form of $K_1(x)$ is $\sqrt{\pi/2x} e^{-x}$ when ε goes to zero (3.20) becomes.

$$\frac{u}{\Omega a_1} = 0 \tag{3.21}$$

Equation (3.21) satisfies the boundary condition at $\xi = 1$, but it does not satisfy the boundary condition at $\xi = \sigma$. The reason is that a boundary layer occurs at $\xi = \sigma$ for a Newtonian fluid, but it does not behave the same way for a fluid of second grade.

The case of $R = -2$, namely $N = 2$, cannot be obtained by (3.17). For $N = 2$, by the definition of $U(a, b, x)$, $U(1, 1, x)$ can be found as

$$U(1, 1, x) = e^x Ei(x) \tag{3.22}$$

where $Ei(x)$ is the exponential integral defined in the following form

$$Ei(x) = \int_x^\infty \frac{e^{-t}}{t} dt \tag{3.23}$$

Inserting $U(1, 1, x)$ into the expression of dg/dr and by integration and by using the boundary condition, one finds.

$$\frac{u}{\Omega a_1} = \frac{\sigma e^{\xi^2/4\varepsilon} Ei(\xi^2/4\varepsilon) - e^{1/4\varepsilon} Ei(1/4\varepsilon) + \ln(\xi^2)}{\xi \xi e^{\sigma^2/4\varepsilon} Ei(\sigma^2/4\varepsilon) - e^{1/4\varepsilon} Ei(1/4\varepsilon) + \ln(\sigma^2)} \tag{3.24}$$

When ε goes to zero, the argument of the exponential integral becomes large, the $Ei(x)$ can be written as e^{-x}/x and (3.24) becomes.

$$\frac{u}{\Omega a_1} = \frac{\sigma \ln \xi}{\xi \ln \sigma} \tag{3.25}$$

4. The Torque Exerted By The Fluid On The Inner Cylinder

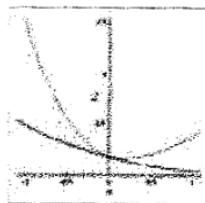
The torque exerted by the flow on the inner cylinder is given in the following form

$$M = 2\pi h a_1^2 \left[\mu \left(\frac{du}{dr} - \frac{u}{r} \right) + \frac{\alpha \alpha_1}{r} \frac{d}{dr} \left(\frac{du}{dr} + \frac{u}{r} \right) \right]_{r=a_1} \tag{4.1}$$

where h is the length of the inner cylinder. The moment coefficient is

$$(C_m)_{r=a_1} = \sigma \left[\left(\frac{du}{d\xi} - \frac{u}{\xi} \right) + \frac{\varepsilon R}{\xi} \frac{d}{d\xi} \left(\frac{du}{d\xi} + \frac{u}{\xi} \right) \right]_{\xi=\sigma} \tag{4.2}$$

Equation shows that the moment coefficient depends on the cross-Reynolds number, the elastic number, and the ratio of the radii of the cylinders. The variation of the moment coefficient with these numbers is illustrated in figure. There are appreciable differences between that of the Newtonian fluid and that of the second grade fluid. The curves in figure show the effect of the second grade fluid. The moment coefficient decreases with the cross-Reynolds number for a Newtonian fluid and increases with the cross-Reynolds number for a second-grade fluid, for all values of the ratio of the radii of the cylinders.



The variation of the moment coefficient with the cross-Reynolds member. The ratio of the radii of the cylinders is taken as 0.2 ($\varepsilon = 0$); ($\varepsilon = 1$)

5. Conclusions

An exact solution of the governing equation for the flow of a fluid of second grade between two coaxial cylinders with porous walls is given. The flow of a second grade fluid for which the inner cylinder is rotating and the outer one is at rest is considered. The solution is given in terms of the confluent hypergeometric functions and is valid for all values of the cross-Reynolds number and the elastic parameter. The boundary conditions are the no-slip boundary conditions and an additional boundary condition. The additional boundary condition is that the solution tends to the Newtonian value as the elastic number in the solution approach zero. The solution is discussed for positive, negative, infinite, and -2 values of the cross-Reynolds number. The torque exerted by the fluid on the inner cylinder is calculated. It is shown that the moment coefficient depends on the cross-Reynolds number, the elastic number and the ratio of the radii of the cylinders. For a given value of this ratio, it decreases with the cross-Reynolds number for a Newtonian fluid and increases with the cross-Reynolds number for a second-grade fluid.

REFERENCES

1. A.S. Berman, "Laminar flow in channels with porous walls" journal of Applied Physics, vol. 24, no. 9, pp. 1232-1235, 1953.
2. A.S. Berman, "Laminar flow in an annulus with porous wall", Journal of Applied Physics, vol.29, no. 1, pp. 71-75, 1958.
3. S.W. Yaun, "Further investigation of laminar flow in channels with porous wall", Journal of Applied Physics, vol. 27, no. 3, pp. 267-269, 1956
4. J.N. Kapur and S.Goel, "Flow of a non-Newtonian fluid between rotating cylinders with suction and injection," Physics of Fluid, vol. 6, no. 5, pp- 626-631, 1963.

5. S.P. Mishra and J.S. Roy, "Laminar elasticoviscous flow in an annulus with porous walls", *Physics of Fluids*, vol. 10, no. 11, pp. 2300-2304, 1967.
6. S.P. Mishra and J.S. Roy, "Flow of elasticoviscous liquid between rotating cylinders with suction and injection," *Physics of Fluids*, vol. 11, no. 10, pp. 2074-2081, 1968.
7. K.R. Rajagopal and P.N. Kaloni, "Some remarks on boundary conditions for flows of fluids of the differential type," in *Continuum Mechanics and Its application*, G.A.C. Graham and S.K. Malik, Eds, pp. 935-942, Hemisphere, New York, NY, USA. 1989.
8. K. Walters, "Relation between Coleman-Noll, Rivlin-Ericksen, Green-Rivlin and Oldroyd fluids," *Zeitschrift fur Angewandte Mathematik and Physik*, vol. 21, no. 4, pp. 592-600, 1970.
9. J.E. Dunn and R.I. Fosdick, "Thermodynamics, stability, and boundedness of fluid of complexity 2 and fluids of second grade, *Archive for Rational Mechanics and Analysis*, vol. 56, no. 3, pp. 191-252, 1974.
10. J.E. Dunn and K.R. Rajagopal. " Fluids of differential type critical review and thermodynamic analysis, *International journal of Engineering Science*, vol. 33, no. 5, pp. 689-729, 1995