

# Gender Imbalance: Trends, Pattern and its Impact on Haryana

<sup>1</sup>Pawan Kumar & <sup>2</sup>Vikas

<sup>1,2</sup>Department of Geography, Kurukshetra University, Kurukshetra, Haryana

---

## ARTICLE DETAILS

### Article History

Published Online: 28 January 2018

### Keywords

Gender Imbalance, population

---

---

## ABSTRACT

*Sex is an easily identifiable characteristic of an individual. Sex composition of a population refers to the balance between male and female in any population. It can be expressed either in the form of proportion of a particular sex in the population or as a ratio between the population of two sexes. As is obvious, the first one gives the number of males per hundred females or number of males per thousand females in the population and is the most widely used measure of sex ratio the world over. On the country the second provides the number of females per hundred males or number of females per thousand males in the population. The sex composition by age group especially the 0-6 years is vital for studying the demographic trends of child population. Though, the overall sex ratio has improved to 879 as compared to 861 in 2001, The child (0-6 years) sex ratio, i.e. the number of girl children per 1,000 male children has shown an unabated decline since 1981. It has declined from 902 in 1981 to 830 in 2011. The decreasing child sex ratio will have a cascading effect on population over a period of time leading to diminishing sex ratio in the state. Sex ratio is an important determinant for assessing composition of population, quality of life, levels of development and level of human resources, level of participation in different economic activities of males or females of a particular region. The preview of the present study is to assess the trends, spatial pattern of overall and child sex ratio and find out the association of sex ratio and also there impact in the society of Haryana (India).*

*“Gender equality is more than a goal in itself. It is a precondition for meeting the challenges of reducing poverty, promoting sustainable development and building good governance-Kofi Annan”*

---

## INTRODUCTION

Sex are the basic characteristic or biological attributes, and affect not only its demographic but also its social, economic and political structure, for the influence birth and death rates, internal and international migration, marital status, manpower, the gross national product, planning regarding educational and medical services and housing etc. as well as socio cultural and biological factors together influence the overall demographic composition of population and its sex ratio. It is an important tool for regional analysis.

In Haryana, there are various social, economic, demographic indicators provides evidences of gender biasness (declining child sex ratio) and inequality against girls children. Many studies in Haryana point out that female ratio in total population had always remained unfavourable. Although according to census of india 2011 there is a little bit of improvement shown in child sex ratio of Haryana over last census of 2001, but more strong efforts are necessary for the uplifting of the girls ratio in the state.

## STUDY AREA

The state of Haryana is located in North-western part of India having a geographical extension of 27 39' to 30 35' North latitudes and 74 54' to 77 40' East longitudes. It came into existence on 1<sup>st</sup> of November 1966. It covers an area of 44212 square kilometers which comprises the 1.34 percent of total area of the country (Sharma and kumar, 2018).The density

is 573 persons per square kilometer. The sex ratio recorded 879 females per thousand males while child sex ratio recorded 830, which is lowest in national average sex ratio.

## OBJECTIVES: THE OBJECTIVES OF THE PRESENT STUDY

ARE –

1. To analyze the pattern of existing general sex ratio and child sex ratio.
2. To explore the factors determining sex ratio.
3. To analyze the level of association between various socio-economic and cultural determinants and sex ratio.

**HYPOTHESIS:** In line with the research objectives and from the literatures reviewed that will be used in the analysis of this work, the main hypotheses to be tested in this study are:

1. Increase female IMR reduced child sex ratio, which means the inverse relationship between female IMR and CSR that means increase in female IMR and decrease child sex ratio.

## DATA BASE AND METHODOLOGY:

- The paper is based on secondary data sources. To fulfill the objectives data regarding infant mortality rate and sex ratio of Haryana is obtained from census of India (2011), statistical abstract of Haryana.
- Spearman's Rank Difference method is used for

analyzes the correlation between IMR of females and child sex ratio.

- Suitable maps and diagrams are used to illustrate the facts. Choropleath map is used to show the pattern of child sex ratio and female IMR.

**TRENDS OF OVER ALL SEX RATIO AND CHILD SEX RATIO OF INDIA AND HARYANA**

Child sex ratios are recognized to be a better indicator of women’s position, because it is very unlikely that they would

be vitiated by sex-selective migration trends. In a population unaffected bias against girl children (as evident for example in female infanticide and feticide), the CSR would favour girls since girls are endowed by nature. The child sex ratio is a sensitive indicator that displays the status of girl children. Trends in child sex ratio will reveal the intensity of changes in it, over a period of time. Table- 1 shows the trends of child sex ratio in India .There is a 50 points decline in CSR from 1971 to 2011.

**Table – 1: Child Sex Ratio (CSR) and Over-all Sex Ratio (OSR) in India**

YEAR	1951	1961	1971	1981	1991	2001	2011
OSR	946	941	930	935	927	933	940
CSR	983	976	964	962	945	927	914

Source: Census of India, 1951- 2011(Provisional).

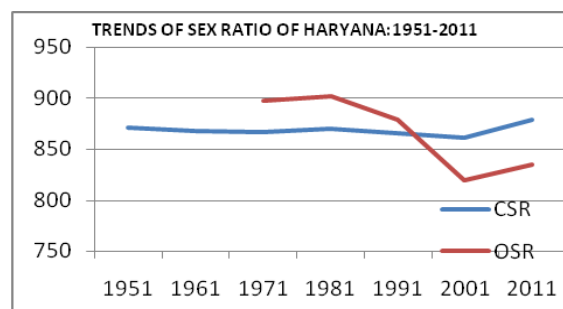
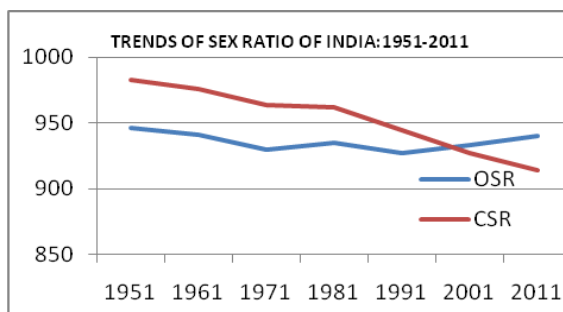
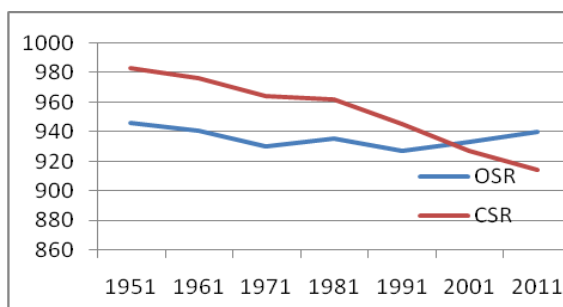
The child sex ratio has been declining faster than overall sex ratio. The decline in the child sex ratio in 2001 Census is a major cause of worry among the planners, demographers and researchers. Lower sex ratio among children is indicative of

more females than males among child population which may lead to demographic imbalance over time if the trend continues in future.

**Table – 2: Child Sex Ratio (CSR) and Overall Sex Ratio (OSR) in Haryana**

YEAR	1951	1961	1971	1981	1991	2001	2011
OSR	871	868	867	870	865	861	879
CSR	-	-	898	902	879	819	834

Source: Primary Census Abstract, Haryana 1951-2011.



**Fig: Trends of overall sex ratio and child sex ratio of Haryana, 1951-2011**

Table-2 shows the trends of child sex ratio in Haryana. In Haryana CSR always decrease since 1981 onwards and OSR shows some improvement in 2011. The child sex ratio in Haryana has been historically negative or in other words,

unfavorable to females since 1981. In the post independence period, the trend of child sex ratio slipped down for three consecutive decades after 1981. During 1981-2011 a steep fall of 68 points was seen in the child sex ratio in Haryana.

Table-3 Trends of Over All Sex Ratio in Haryana(1981-2011)					Trends of CSR in Haryana	
YEAR						
Districts	1981	1991	2001	2011	2001	2011
Ambala	902	903	868	885	782	810
Bhiwani	897	878	879	886	841	832
Faridabad	812	828	839	873	847	843
Fatehabad	881	877	884	902	828	854
Gurugram	881	871	873	854	807	830
Hisar	859	853	851	872	832	851
Jhajjar	895	861	847	862	801	782
Jind	856	838	852	871	818	838
Kaithal	848	853	853	881	791	828
Karnal	856	864	865	887	809	824
Kurukshetra	872	879	866	888	771	818
Mahendergarh	939	910	918	895	818	775
Nuh	-	-	-	907	893	906
Panchkula	833	839	823	873	829	863
Panipat	850	852	829	864	809	837
Palwal	-	-	-	880	854	966
Rewari	925	928	899	898	811	787
Rohtak	869	849	847	867	799	820
Sirsa	878	885	882	897	817	862
Sonipat	866	840	839	856	788	798
Yamunanagar	855	883	862	877	806	826

Source: Primary Census Abstract, Haryana 1981-2011.

#### CO-RELATION BETWEEN FEMALES IMR AND CHILD SEX RATIO:

The infant mortality rates denotes that as a ratio of infant deaths(deaths of children under one year of age) registered in a calendar year to the total number of live births registered in the same year, where female IMR is one of the determinants

of child sex ratio. Generally high female IMR is indicate that lower child sex ratio, because high female IMR mean that the loss of number of female child population that also help in reduce the child sex ratio. That's why the present study tries to understand the relation between child sex ratio and female IMR of Haryana.

Table 4:Co-Relation between Females IMR and Child Sex Ratio, 2011

Districts	Females IMR(2011)	Rank	Child sex ratio(2011)	Rank	D	D2
Ambala	43	20	810	17	3	9
Bhiwani	51	12	832	10	2	4
Faridabad	47	17.5	843	7	10.5	110.25
Fatehabad	59	5.5	854	5	0.5	0.25
Gurugram	42	21	830	11	10	100
Hisar	55	8.5	851	6	2.5	6.25
Jhajjar	47	17.5	782	20	-2.5	6.25
Jind	59	5.5	838	8	-2.5	6.25

Kaithal	58	7	828	12	-5	25
Karnal	61	4	824	14	-10	100
Kurukshetra	49	14	818	16	-2	4
Mahendergarh	55	8.5	775	21	-12.5	156.25
Nuh	82	1	906	1	0	0
Panchkula	47	17.5	863	3	14.5	210.25
Panipat	51	12	837	9	3	9
Palwal	62	3	866	2	1	1
Rewari	64	2	787	19	-17	289
Rohtak	47	17.5	820	15	2.5	6.25
Sirsa	54	10	862	4	6	36
Sonipat	48	15	798	18	-3	9
Yamunanagar	51	12	826	13	-1	1

Source: census of India, 2011

The Spearman's Rank Difference method is used for the calculation of the correlation of females IMR and child sex ratio in Haryana. It is observed that there is positive correlation i.e.  $r=0.29$  between the females IMR and child sex ratio in Haryana.

#### DISCUSSION:

Generally, high sex ratio indicates low IMR but this is not true in the case of haryana. The highest females IMR was found in Nuh district (82) and lowest in Gurugram District(42). The highest child sex ratio was also found in Nuh district(906) whereas lowest in Mahendergarh district(775) of Haryana. But the correlation between females IMR and child sex ratio found low degree and positive angle i.e.  $r = 0.29$ . The district of western and southern part of the state which are less developed in terms of health and education indexes have resulted superior child sex ratio as compared to the northern and eastern districts that are not only facilitating highly industrialization and urbanization but also in cluster of high literacy rate and socially attentive. Misuse of technology in pre sex deciding and sex selective abortion in developed district are the main cause of low child sex ratio.

#### IMPACT OF DECLINING SEX RATIO IN HARYANA:

1. The excess of males tends to lower the age of marriage of females. Early marriages lead to considerable disparity in age between husband and wives. This difference in age tends to increase widowhood.
2. Early marriage of females may also lead to increased fertility and population growth.
3. An adverse sex ratio (i.e., when the proportion of females is small) leads to the social emergence of many social and moral evils like rape, prostitution, impairing the morale of workers in near future. It also witnessed in human development report (2011) on gender inequality index that India record 129<sup>th</sup> rank which shows the significance of gender discrimination.

#### POLICY RECOMMENDATIONS:

Son preference is the main culprit is known to be found in certain type of cultures, that is part lineal cultures. To sort out

this son preference is most needed for to improve sex ratio and social stability against the women violence. This is solve out by the-

1. The modern state has powerful tools for in corporating and managing it citizenry, rendering partlineages a threat rather than asset for the state. The modern state has brought in political, social and legal reforms aimed to challenge traditional social hierarchies, including the age and gender hierarchies of the kinship system.
2. Impact of media; suggest that states can accelerate the resultant decline in son preference, through media efforts to help parents perceive that daughters can now be valuable as sons and also use folk drama for this purpose. Behavior change communication programs –disseminated via mass media, community level events, interpersonal communication/ counseling, and electronic media- increases awareness and to motivate individual to action ( Bongaarts, Cleland, Townsend, Bertrand, and Monica Das Gupta:2012 ).
3. Need incentive in education and health organization for women participation. Government needs special attention on women educational scholarship and health subsidy for women health that change the behavior of the society about women.
4. Allowing full participation of women in personal and family decisions — especially those relating to childbearing;

#### CONCLUDING OBSERVATION

1. Gurugram industrial developed belt has low sex ratio due to sex selective male migration from neighbor districts due to search employment and other facilities.
2. Gurugram, Ambala and Faridabad districts shows low IMR because of high medical, education and Transport facilities they have.
3. The main culprits of low child sex ratio in Haryana is female foeticide, son preference and gender inequality which to suppress male dominant social structure.

## REFERENCES

1. Alves. J.E.D., S.Cavenaghi and George Martin (2011), "Reducing Reversing Gender Inequality In Latin America, Presented At : Population Association of America, Washington Dc, 31March-2 April 2011.
2. Amertya Sen (2003) "Missing women-Revisited", The British Medical Journal 328:1297-1298. Sex Differential in Childhood Mortality, United Nation Department of Socio and Economic Affairs (Population Division),2011.
3. Kalyan Sunder Som and R.P. Mishra, "Gender Imbalance: Trends, Pattern and its impact on West Bangal", IJSR publications, volume 4, july 2014.
4. Kavita and Ved Parkash ' Imbalanced Sex Ratio in Haryana : Rural and Urban Dimension" Economic Affairs, Vol.64,NO.1,pp.241-247, March 2019