

Artifact Removal From EEG Recordings–An Overview

¹G Santhosh Reddy & ²Dr.C Chitra

¹Research Scholar, Sri Satya Sai University, Sehore M.P. (India)

²Research Guide, Sri Satya Sai University, Sehore M.P. (India)

ARTICLE DETAILS

Article History

Published Online: 15 May 2019

Keywords

EEG, cerebrum, head.

ABSTRACT

Electrical driving forces produced by nerve firings in the cerebrum diffuse through the head and can be estimated by terminals set on the scalp, is known as electroencephalogram (EEG) and was first estimated in people by Hans Berger in 1929. The EEG gives a coarse perspective on neural movement and has been utilized to noninvasively contemplate subjective procedures and the physiology of the mind. The examination of EEG information and the extraction of data from this information is a troublesome issue. This issue is exacerbated by the presentation of superfluous naturally created and remotely produced sign into the EEG. EEG information is utilized for advancement of cerebrum PC interfaces (BCIs). A mind PC interface has been characterized as a "correspondence framework that does not rely upon the cerebrum's typical yield pathways of fringe nerves and muscles". A BCI framework permits clients, regularly individuals with engine incapacities, to convey, by means of a PC, through their EEG signals. To expand the adequacy of BCI frameworks it is important to discover techniques for expanding the sign to-clamor proportion (SNR) of the watched EEG signals. With regards to EEG driven BCIs, the sign is endogenous cerebrum movement estimated as voltage changes at the scalp while clamor is any voltage change created by different sources. These clamor, or antique, sources include: line commotion from the power network, eye flickers, eye developments, heart beat, breathing, and other muscle action. A few antiquities, for example, eye flickers, produce voltage changes of a lot higher adequacy than the endogenous cerebrum action. In this circumstance the information must be disposed of except if the antiquity can be expelled from the information. The present paper gives outline of various strategies for antiquity evacuation.

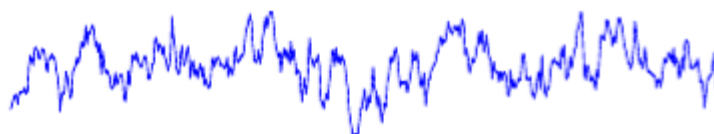
1. Introduction

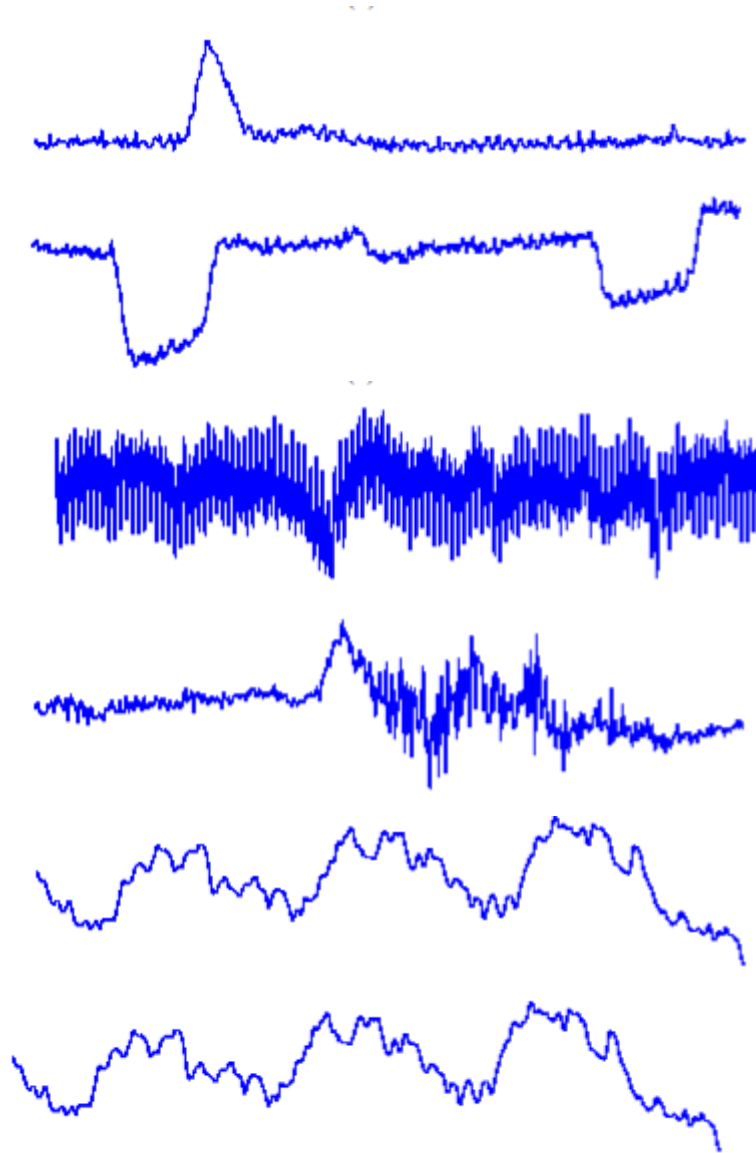
The electroencephalogram (EEG) was first estimated in people by Hans Berger in 1929. Electrical motivations created by nerve firings in the mind diffuse through the head and can be estimated by cathodes set on the scalp, and is known as electroencephalogram (EEG). The ancient rarities, for example, eye flickers and so on, in EEG accounts clouds the basic procedures and makes examination troublesome. A lot of information should frequently be disposed of in view of defilement by ancient rarities. To beat this trouble, signal partition systems are utilized to isolate curios from the EEG information of intrigue. The commotion, or ancient rarity, sources include: line clamor from the power network, eye flickers, eye developments, heart beat, breathing, and other muscle action. A few relics, for example, eye joins, produce voltage changes of a lot higher adequacy than the endogenous mind movement. In this circumstance the information must be disposed of except if the ancient rarity can be expelled from

the information. The greatest sign division (MSF) change is an option in contrast to the two most regular methods: main segment investigation (PCA) and autonomous part examination (ICA). A sign partition technique dependent on standard connection investigation (CCA) is additionally utilized. The strategy for postponements is utilized as a method for managing non-prompt blending of cerebrum and ancient rarity source signals.

2. Artifacts

EEG information might be tainted at numerous focuses amid the account and transmission process. The vast majority of the antiques are naturally produced by sources outside to the mind. Improving innovation can diminish remotely produced antiques, for example, line commotion, however natural curio signals must be expelled after the recoding procedure. Figure demonstrates waveforms of some regular EEG ancient rarities.





3. Eye Blink Artifact

It is normal in EEG information, creates a high adequacy signal that can be commonly more noteworthy than EEG sign of intrigue. In view of its high sufficiency an eye flicker can degenerate information on all anodes, even those at the back of the head. Eye ancient rarities are frequently estimated all the more legitimately in the electrooculargram (EOG), sets of terminals set above and around the eyes. Sadly, these estimations are debased with EEG sign of intrigue thus basic subtraction isn't an evacuation alternative regardless of whether a definite model of EOG dispersion over the scalp is accessible [2]

Eye Movement

These curios are brought about by the reorientation of the retinocorneal dipole [3]. The impact of this relic is more grounded than that of the eye flicker antiquity. Eye squints and developments regularly happen at close interims

Line Noise

Solid sign from A/C control supplies can degenerate EEG information amid exchange from the scalp anodes to the account gadget. Indent channels are regularly used to channel this ancient rarity containing lower recurrence line commotion

and sounds. Score sifting at these frequencies can evacuate helpful data. Line clamor can degenerate the information from a few or the majority of the cathodes relying upon the wellspring of the issue.

Muscle Activity

These antiquies are brought about by movement in various muscle bunches including neck and facial muscles. These sign have a wide recurrence extend and can be appropriated crosswise over various arrangements of cathodes relying upon the area of the source muscles.

Pulse

At the point when an anode is set on or close to a vein, it causes heartbeat, or heart beat, ancient rarity. The extension and compression of the vessel bring voltage changes into the accounts. The curio signal has a recurrence around 1.2Hz, yet can shift with the condition of the item. This ancient rarity can show up as a sharp spike or smooth wave [4].

4. Artifact Removal Techniques

Relics in EEG are normally taken care of by disposing of the influenced portions of EEG. The easiest methodology is to

dispose of a fixed length section, maybe one moment, from the time a curio is recognized. Disposing of sections of EEG information with ancient rarities can significantly diminish the measure of information accessible for investigation. EEG information gathered from kids is particularly hazardous in this regard [10]. The primary endeavors at evacuating relics concentrated on eye flickers. Relapse utilizing the EOG divert was endeavored in the time and recurrence space [12, 11, 20, 24, 25]. These techniques all depend on a spotless proportion of the curio sign to be subtracted out. Since the EOG is debased with EEG flag, the relapse of visual relics has the undesired impact of expelling EEG signals from the perceptions. A decent review can be found in [8, 9]. Kenemans et al. [14] gave a general slacked relapse model. Jung et al. [2] utilized this relapse model for a pattern relic expulsion technique. Multivariate measurable investigation procedures, for example, key segment examination, have been utilized to separate and expel clamor signals from the cerebrum movement of premium [5, 16, 2, 13, 17, 7, 20]. Correlations of ancient rarity expulsion utilizing various changes can be found in [26, 22]. Examination of four strategies for antique expulsion by misleadingly blending an ancient rarity signal from one subject with a lot of EEG signals from another subject is given in [22]. The fake blending networks were picked to inexact blending in the scalp. Two autonomous segment examination strategies contemplated in [6], were essentially superior to vital segment investigation and basic EOG subtraction. Execution was estimated utilizing the mean squared blunder between the genuine antiquity signal and the extricated ancient rarity signal. Importance was estimated utilizing a F-measurement and Tukey's studentized go test [22]. Anyway misleadingly blending a sign from one subject with those of another subject can not approximate the genuine conditions of ancient rarity tainting of EEG. The basic spatial examples (CSP) strategy, which requires the utilization of two informational indexes was utilized by Koles [15] to expel anomalous Components. It utilizes information from 80 patients. No quantitative assessment was done on the expulsion however it was outwardly seen that the ancient rarities were separated into few parts that would permit their evacuation. In web based filtering frameworks, antique acknowledgment is significant for accomplishing their programmed expulsion. One way to deal with acknowledgment of commotion segments depends on estimating structure in the sign. The fractal measurement and a measurement dependent on auto-backward (AR) coefficients have been utilized for this reason [7, 21]. Eye flickers and heart pulsates were found to have predictable fractal measurements on the information contemplated [21]. Jung [2] proposes that the ghostly structure may be particular for certain ancient rarity segments (e.g., line commotion) and this would take into account programmed evacuation of these antiques. Kalman channels and expanded Kalman channels have additionally been utilized for antiquity identification with success depending intensely on the ancient rarity type [19, 18]. This methodology was best at remembering one moment windows containing muscle and development ancient rarities. The regular sign detachment ways to deal with ancient rarity expulsion are: foremost parts investigation, most extreme sign division examination, accepted connection investigation, and free segment investigation.

5. EEG Data Collection

EEG is most generally recorded by the global 10-20 terminal position framework appeared in Figure [29]. The 10-20 framework was created to institutionalize the accumulation of EEG and encourage the examination of studies performed at various research centers. At the point when just a couple of channels of EEG are gathered the anodes are put at a subset of the destinations.. The EOG channel by and large comprises of two cathodes referenced to one another. The recorded sign is gotten by subtracting a sign estimated underneath the eye from one quantified over the eye.

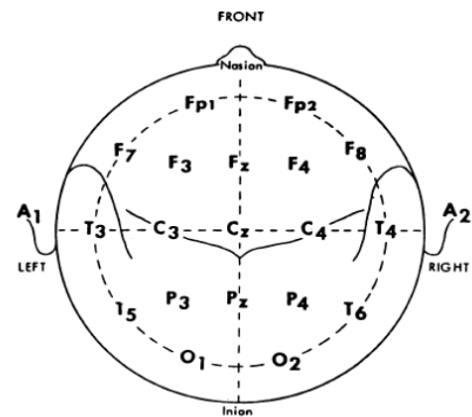


Figure: The International 10-20 electrode placement system

6. Comparing Artifact Removal Methods

Investigation of antique expulsion is naturally troublesome, on the grounds that no reality is known by which techniques can be looked at. One approval measure, initially proposed in [20], is that the EOG and the EEG ought to be uncorrelated. Croft and Berry [9] note that however this may fill in as a guide, the genuine connection among's EEG and EOG is obscure, thus this can't be a genuine approval measure. By the by, considering these connections can yield intriguing data about the information. The foremost segment examination system, or identically, the particular esteem disintegration (SVD), is restricted in its sign detachment abilities by the concurrent imperatives of transient and spatial symmetry. For an antique sign to be isolated by the SVD, it must have high change or it will be blended with different parts. For some huge sufficiency eye squints this suspicion might be met, yet the SVD will commonly not be fruitful at evacuating other lower adequacy ancient rarity signals. The greatest sign division (MSF) change implements worldly de relationship of the extricated segments yet just compels the spatial examples to shaping an invertible lattice. The improvement criteria used to determine this system permits the arranging of the changed flag arranged by diminishing sign to commotion proportion. The requesting can be utilized to help consequently de clamor signals since low sign to commotion proportion segments can be sifted through. Eye flicker antiques will in general have high sign to-clamor proportions and are commonly the first or second segment. The accepted connection examination (CCA) way to deal with sign partition necessitates that the sign to be isolated have diverse 1-slack autocorrelation structures.

7. Conclusions

The outline of Artifacts and their expulsion in EEG Signals. Different procedures has been talked about for antique

expulsion. Creators are by and by occupied with structuring canny methods for ancient rarity evacuation and other Brain Computer interface related procedures, for example,

characterization of engine symbolism and so forth. A review on relic expulsion systems has been displayed in this paper.

References

- [1] J.R. Wolpaw, N. Birbaumer, W.J. Heetderks, D.J. McFarland, P.H. Peckham, G. Schalk, E. Donchin, L.A. Quatrano, C.J. Robinson, and T.M. Vaughan. Mind PC interface innovation: An audit of the main worldwide gathering. *IEEE Transactions on Rehabilitation Engineering*, 8(2):164-173, June 2000.
- [2] T-P. Jung, C. Humphries, T.W. Lee, M.J. McKeown, V. Iragui, S. Makeig, and T.J. Sejnowski. Evacuating electroencephalographic ancient rarities by visually impaired source partition. *Psychophysiology*, 37:163-178, 2000.
- [3] D.A. Overton and C. Shagass. Conveyance of eye development and eye squint possibilities over the scalp. *Electroencephalography and Clinical Neurophysiology*, 27:546, 1969
- [4] J.F. Cardoso. High-request contrasts for free segment anlysis. *Neural Computation*, 11(1):157-192, 1999.
- [5] P. Berg and M. Scherg. Dipole models of eye action and its application to the expulsion of eye antiques from the EEG and MEG. *Clinical Physics and Physiological Measurements*, 12(Supplement A):49-54, 1991
- [6] J.- F. Cardoso. High-request contrasts for free part anlysis. *Neural Computation*, 11(1):157-192, 1999
- [7] A.Cichocki and S. Vorobyov. Utilization of ICA for programmed commotion and impedance wiping out in multisensory biomedical sign. In *Proceedings of the Second International Workshop on ICA and BSS*, pages 621-626, June 2000.
- [8] R. J. Croft and R. J. Barry. EOG remedy: Which relapse would it be a good idea for us to utilize? *Psychophysiology*, 37:123-125, 2000.
- [9] R. J. Croft and R. J. Barry. Expulsion of visual relic from the EEG: an audit. *Clinical Neurophysiology*, 30(1):5-19, 2000.
- [10] Dr. Patti Davies. Individual correspondence. Word related Therapy Department, Colorado State University
- [11] G.Gratton, M.G. Coles, and E. Donchin. Another technique for disconnected evacuation of visual antique. *Electroencephalography and Clinical Neurophysiology*, 55:468-484, 1983.
- [12] S.A.Hillyard and R. Galambos. Eye-development relic in the CNV. *Electroencephalography and Clinical Neurophysiology*, 28:173-182, 1970.
- [13] T.P. Jung, S. Makeig, M. Westerfield, J. Townsend, E. Courchesne, and T.J. Sejnowski. Expulsion of eye action ancient rarities from visual eventrelated possibilities in ordinary and clinical subjects. *Clinical Neurophysiology*, 111(10):1745-58, 2000.
- [14] J.L.Kenemans, P. Molenaar, M.N. Verbaten, and J.L. Slangen. Expulsion of the visual relic from the EEG: an examination of time and recurrence area strategies with mimicked and genuine information. *Psychophysiology*, 28:114-121, 1991.
- [15] Z.J. Koles. The quantitative extraction and topographic mapping of the irregular segments in the clinical EEG. *Electroencephalography and Clinical Neurophysiology*, 79:440-447, 1991.
- [16] S. Makeig, A.J. Chime, T-P. Jung, and T.J. Sejnowski. Free segment examination of electroencephalographic information. In D. Touretzky, M. Mozer, and M. Hasselmo, editors, *Advances in neural data handling frameworks*, volume 8, pages 145-151, Cambridge, MA, 1996. The MIT Press.
- [17] M. Potter, N. Gadhok, and W. Kinsner. Detachment execution of ICA on reenacted EEG and ECG signals debased by commotion. *Canadian Journal of Electrical and Computer Engineering*, 27(3):123-127, July 2002.
- [18] M. Rahalova, P. Sykacek, M. Koska, and G. Dorner. Recognition of the EEG ancient rarities by the methods for the (broadened) Kalman channel. *Estimation Science Review*, 1(1):59-62, 2001
- [19] A. Schläogel, P. Anderer, S.J. Roberts, M. Pregenzer, and G. Pfurtscheller. Antique location in rest EEG by the utilization of Kalman separating. In *Proceedings EMBEC'99, Part II*, pages 1648-1649, Vienna, Austria, November 1999.
- [20] R. Verleger, T. Gasser, and J. Taunts. Redress of EOG artifacts in occasion related possibilities of EEG: Aspects of unwavering quality and legitimacy. *Psychophysiology*, 19:472-480, 1982.
- [21] S. Verobyov and A. Cichocki. Daze clamor decrease fo multisensory signals utilizing ICA and subspace separating, with application to EEG investigation. *Organic Cybernetics*, 86:293-303, 2002.
- [22] L. Vigon, M.R. Saatchi, J.E.W. Mayhew, and R. Fernandes. Quantitative evaluation of strategies for visual ancient rarity expulsion. *IEE Proc.- Sci. Meas. Technol.*, 147(5), September 2000.
- [23] P.D. Welch. The utilization of quick fourier change for the estimation of intensity spectra: A strategy dependent on time averaging over short, modified periodograms. *IEEE Transactions on Audio Electroacoustics*, 15(2):70-73, June 1967.
- [24] J.L. Whitton, F. Lue, and H. Moldofsky. An unearthy technique for expelling eye-development antiquities from the EEG. *Electroencephalography and Clinical Neurophysiology*, 44:735-741, 1978.
- [25] J.C. Woestenburg, M.N. Verbaten, and J.L. Slangen. The expulsion of the eye-development ancient rarity from the EEG by relapse examination in the recurrence area. *Organic Physiology*, 16:127-147, 1983.