

The Changing Occupation Structure of Shirdi

Dr. Darade Jalindar Uttamrao

Head and Associate Professor in Department of Geography, Jamkhed Mahavidyalaya, Tal. Jamkhed, Dist. Ahmednagar (India)

ARTICLE DETAILS

Article History

Published Online: 15 April 2019

Keywords

Occupational Structure, Shirdi, Activities, Working Population.

*Corresponding Author

Email: bramhadarade[at]gmail.com

ABSTRACT

The term of Occupational arrangement indicators the unitary relationship pattern of the three occupational mechanism of the working population. These components include Primary, Secondary, and Tertiary activities. The occupational characteristics of a place depend on its socio-economic history, series of the growth, basic function and resources of the region in which it is located. The nature and difficulty of economic base present increase to individual types of occupation characteristics.

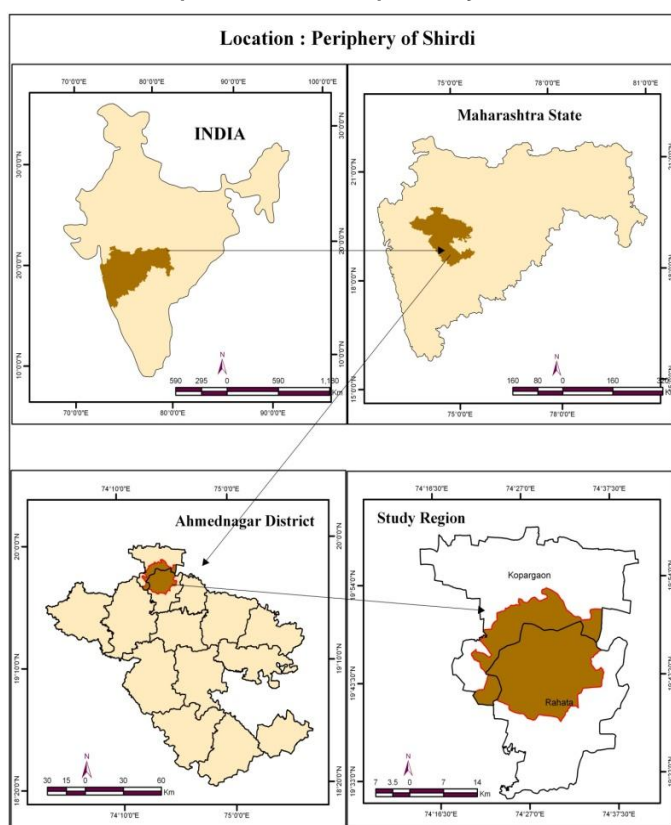
1. Introduction

Occupational structure is a face of the state of development of any society. Change in occupation may mean change in suitable standard of living, values ideology and condition in which livelihood is to earned (Pant 1992). Occupational structure is a significant aspect and mirror of population composition throwing light on the socio-economic development and changes them in the data pertaining to its spatial distribution structure and growth in time have its own utility and role is policy decision (Kohli and Kothari 1996). The quantity of workers occupied in various occupations throw light on economic and cultural facets of the society particularly in India where cultural landing stage have strong approach on man's livelihood (Gosal 1960). The occupation of an individual refers to his trade, profession, or types of works. The occupational structure of a society is the produce of various socio-economic factors. In this chapter, the focus made on the occupation structure and economic sources and condition of people in the study area.

2. Geographical Location:

Shirdi and Peripheral Area (10 Km) located to the North western part of Ahmednagar district and lies between 19° 38' to 19° 53' North latitude and 74° 20' to 74° 36' East longitude, covering area about 472.83 Sq. km (Total 42 Villages) those villages are selected for Rahatatahsil 28 villages and Kopargoanthasil 14 villages. To this Peripheral Area (Map No.1) to its North Kopargaon and to the West SangamnerTahsil, to the East Shirampur and to the Southern is RahuriTahsils are located. The total population of the study area is 2, 05,364 (2011). Shirdi (Rahata) is a city and having municipal council situated in RahataTahsil of Ahmednagar district in the State of Maharashtra. Shirdi Tourism Centre) located from 19° 44' to 19° 46' North latitude and from 74° 27' to 74° 31' East longitude, covering area about 14.34 Sq. km and total population is 36,004 (2011). It is on AhmednagarManmad State High Way (No. 10) at 82 km away from Ahmednagar district place and 15 Km from Kopargaon, 96 Km from Nashik district place and 80 Km from ShaniShinganapur. Shirdi is situated in RahataTahsil. To its North Kopargaon, to the West Sangamner and AkoleTahsil, to the East is Shirampur, Newasa and to the South RahuriTahsils are located.

Map No1: Location Map of study area



3. Amis and Objective

The main objective of present paper was study of shirdi peripheral area about 10 Km. The present study have total working population, male and female occupation activities. With the study of main working male and female in 2001 to 2011 census years.

4. Methodology

The present study depend on secondary data source use that it is district census period about 2001 to 2011. The change in the Occupational Structure of the population presented in this paper during the census period 2001 and 2011. To show the data in maps choropleth method has been used as well as their separate interpretation are also given. The region taken

for study is consider after taking 10 Km peripheral areal distance from Shirdi.. As this is 10 km peripheral distance, but if the boundaries of this buffer zone touch to the boundary of another village or half village, those villages are also considered in the study area. there are 42 villages from Shirdi have been studied. The present work deals with Occupation Structure in both Shirdi peripheral area (10 Km), this mainly includes **Total Working Population (TWP), Total Working Male Population (TWMP), Total working Female population (TWFP), Main Working Population (MWP), Main Working Male Population, Main Working Female Population**, All the characteristics show by GIS technique maps and population census data 2001 and 2011. Let us see this Occupation Structure.

5. Result and Analysis

Total Working Population :

The map shows the Total working population of Shirdi and peripheral area in the year Census 2001 to 2011 and the changing pattern of the same. According to census 2001 and in the same year, highest TWP (more than 60.1%) was not recorded in any village of the study area, while 5 villages from south western part, 2 villages from North West, 1 village from north. Whereas 1 village from central and 1 village from south east were recorded 50.1 to 60% TWP. But 5 villages from central and 1 village from north east were recorded less than 40% TWP from the study area. Remaining all the villages from the study area were recorded 40.1 to 50% TWP. As compare to this, according to census 2011, it is observed that there is a village, known as Wari has recorded highest TWP which is more than 70.1%. 60.1 to 70% TWP is recorded in only 2 villages namely Sonewadi and Bahadarabad, whereas 17 villages are recorded 50.1 to 60% TWP and they are mostly located in southern, western and north eastern part of the study area. During the study period it is also observed that 6 villages from the central are recorded less than 40% total working population. And remaining all the villages are recorded 40.1 to 50% TWP in the study area. The last sub map shows the changes in the TWP of Shirdi and peripheral area from 2001 to 2011. According to this map, negative change in TWP is observed in the 7 villages from north, 15 villages from east, central and west as well as only one village from south east. Remaining all the villages shows positive change in the TWP in the study area. It is also observed during the census period that no one village has recorded 'no change'.

Total working male population:

The map shows the TWMP of Shirdi and peripheral area in the year Census 2001 to 2011 and the changing pattern of the same. According to census 2001 and in the same year, only 4 villages namely Kokamthan, Jeurkumbhari, Chandekasare, Sonewadi, Bahadarabad and Dorhale-Korhale were recorded less than 50% TWMP and remaining all the villages from the study area were recorded 50.1 to 60% TWMP. As compare to this, according to census 2011, it is observed that there is only one village, known as Wari has recorded highest TWMP which is more than 70%. 60.1 to 70% TWMP is recorded in Shingave, Sonewadi and Bahadarabad. Whereas Kokamthan, Dorhale, Soyegaon, Malharwadi and KelwadKh are recorded less than 50% TWMP. And remaining all the villages are recorded 50.1 to 60% TWMP in the study area.

The last sub map shows the changes in the TWMP of Shirdi and peripheral area from 2001 to 2011. According to this map, negative change in TWMP is observed in the 9 villages namely Kokamthan, N.Pwadi, RanjangaonKh, KelwadKh, Malharwadi, Ves, Soyegaon, Dorahale and Kankuri. Remaining all the villages shows positive change in the TWMP in the study area. It is also observed during the census period that no one village has recorded 'no change'. The map shows the TWFP of Shirdi and peripheral area in the year Census 2001 to 2011 and the changing pattern of the same. According to census 2001 and in the same year, highest TWFP (more than 70.1%) was not recorded in any village of the study area, while only one village from western part i.e. Soyegaon was recorded 60.1 to 70% TWFP, while KelwadBk, Malharwadi, PohegaonKh, Sonwadi, Ghari, NandurKh and NandurkhiKh were recorded 50.1 to 70% TWFP. Whereas 3 villages from south, 5 villages from east, 2 villages from North were recorded 40.1 to 50% TWFP. Remaining all the villages from the study area were recorded less than 40% TWFP.

Total working Female population :

As compare to this, according to census 2011, it is observed that there is a village, known as Wari has recorded highest TWFP which is more than 70.1%. 60.1 to 70% TWFP is recorded in only 2 villages namely Sonewadi and Bahadarabad whereas 9 villages are recorded 50.1 to 60% TWFP and they are mostly located in western and eastern part of the study area. As well as 5 villages from west and south west and 3 villages from north are recorded 40.1 to 50% TWFP. And remaining 20 villages are recorded less than 40% TWFP in the study area. The last sub map shows the changes in the TWFP of Shirdi and peripheral area from 2001 to 2011. According to this map, negative change in TWFP is observed in more than 12 villages which are runs from north to south east in the central area, 4 villages from North West and 4 villages from south west. Remaining all the villages shows positive change in the TWFP in the study area. It is also observed during the census period that no one village has recorded 'no change'.

Main working Population:

The map shows the MWP of Shirdi and peripheral area in the year Census 2001 to 2011 and the changing pattern of the same. According to census 2001 and in the same decade, highest MWP (more than 90%) was recorded in western of the study area, 4 villages from central part and 2 villages from east. Whereas 4 villages from west, 3 villages from central part, 3 villages from south, 2 villages from north east and 1 village from north were recorded 80.1 to 90% MWP. But 4 villages namely Khadkewake, KelwadKh, DahigaonKorhale and Dauch were recorded 60.1 to 70% MWP. Whereas less than 7 villages were recorded 70.1 to 80% MWP. It is also observed that KelwadBk, NandurkhiBk, Chandekasare and Ghari were recorded less than 60% MWP. As compare to this, according to census 2011, it is observed that there is a tremendous change in MWP. The highest (more than 90%) MWP is recorded in more than 50% villages of the study area. 12 villages shows 80.1 to 90% MWP only one village i.e. NandurKh shows 60.1 to 70% MWP. Whereas it is also observed that the villages like Khadkewake, RanjangaonKh, DahigaonKorhale and SavaliVihirKhare recorded less than

60% MWP in the study area. The last sub map shows the changes in the MWP of Shirdi and peripheral area from 2001 to 2011. According to this map negative change in MWP is observed in the 6 villages from west, 3 villages from central and 3 villages from east. Remaining all the villages shows positive change in the MWP in the study area. It is also observed during the census period that no one village has recorded 'no change'.

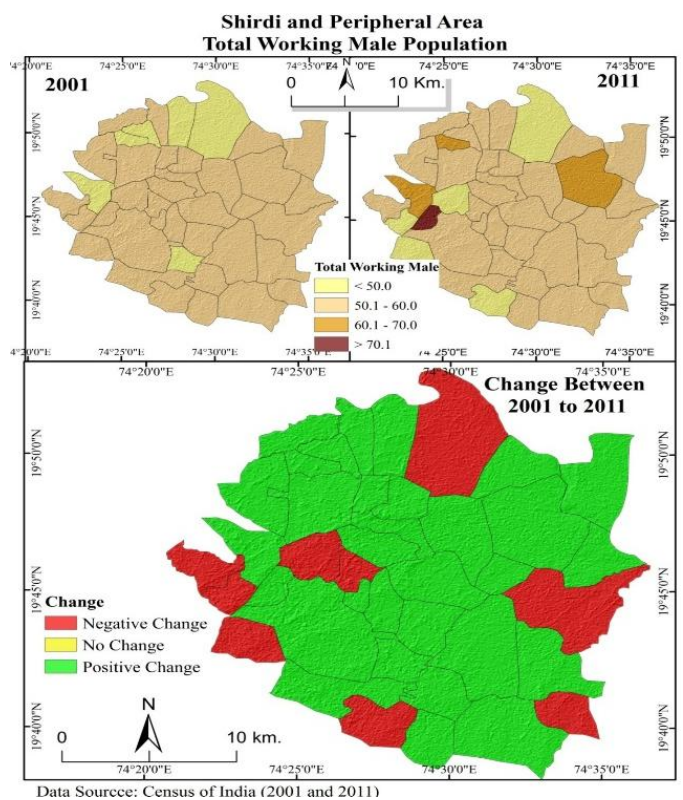
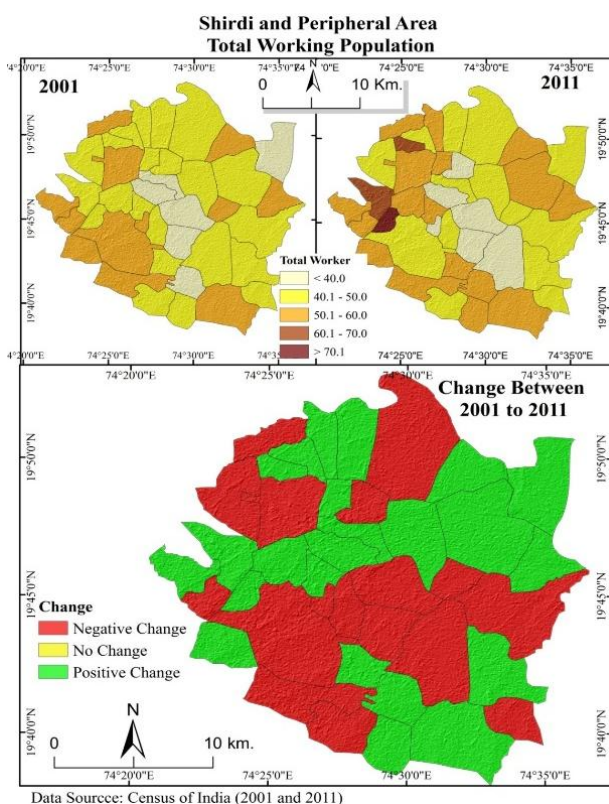
Main male working population :

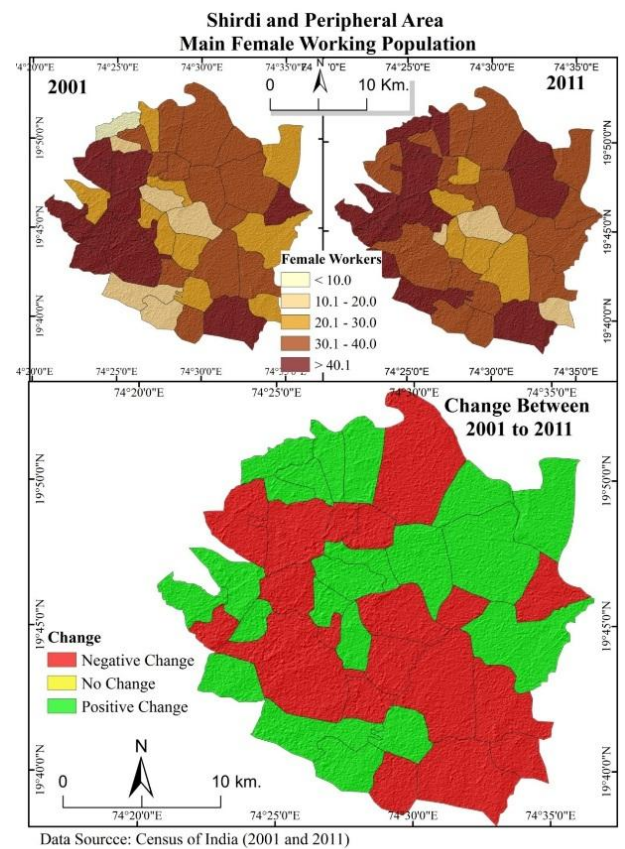
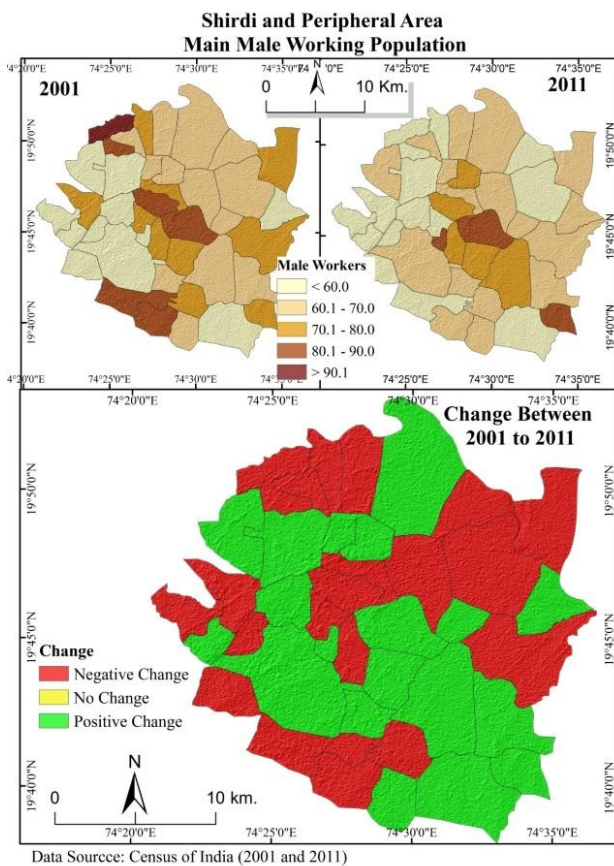
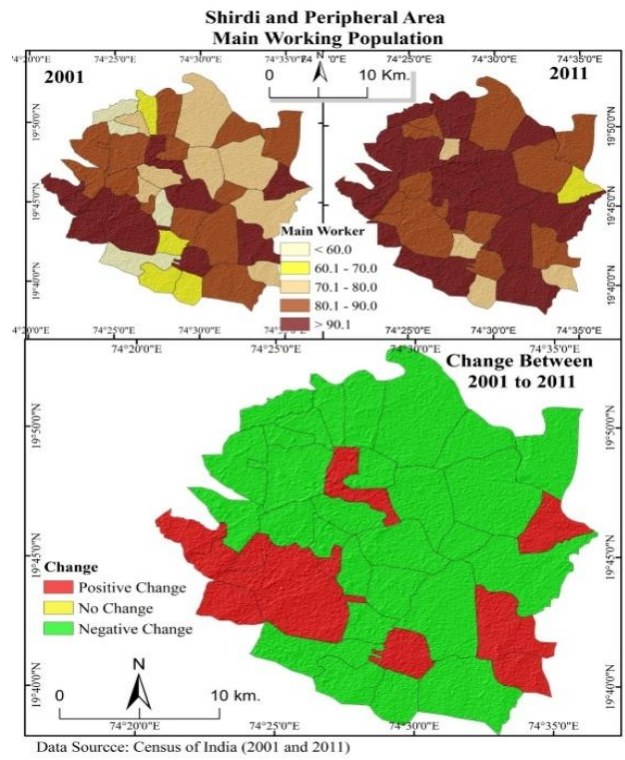
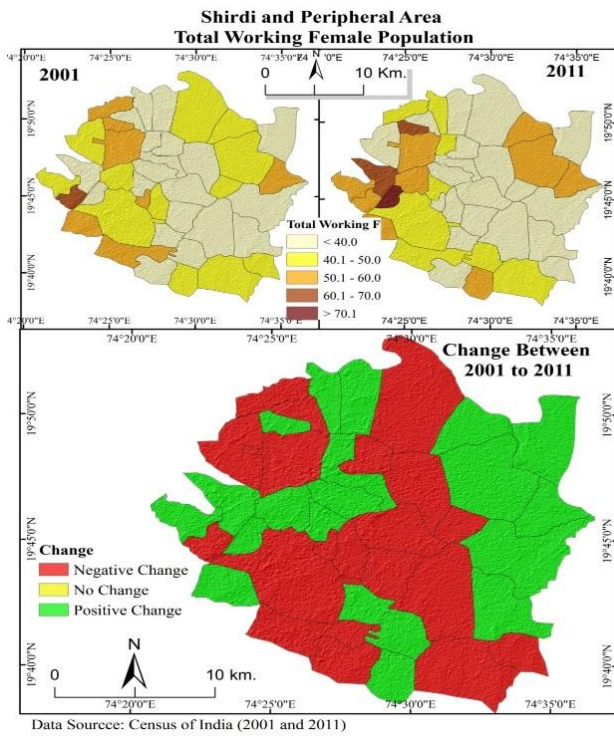
The map shows the MMWP of Shirdi and peripheral area in the Census year 2001 to 2011 and the changing pattern of the same. According to census 2001 and in the same decade, highest MMWP (more than 90.1%) was recorded in only one village from north west i.e. Ghari. Whereas 2 villages from south, 2 villages from central part and 1 village from north west were recorded 80.1 to 90% MMWP. But 10 villages were recorded 60.1 to 70% MMWP. Whereas 13 villages were recorded 70.1 to 80% MMWP it is also observed that more than 14 villages were recorded less than 70% MMWP in the study area. As compare to this, according to census 2011, it is observed that there is a tremendous change in MMWP. The highest (more than 90.1%) MMWP is recorded in 3 villages of the study area. 5 villages show 70.1 to 80% MMWP which are situated in the surrounding area of Shirdi. 17 villages are recorded 60.1 to 70% MMWP. Whereas it is also observed that 15 villages from the study area are recorded less than 70% MMWP. The last sub map shows the changes in the MMWP of Shirdi and peripheral area from 2001 to 2011. According to this map, negative change in MMWP is observed in the 4 villages from west, 5 villages from central, 4 villages from east and 5 villages from north. Remaining all the villages shows positive

change in the MMWP in the study area. It is also observed during the census period that no one village has recorded 'no change'.

Main Female working population :

The map shows the MFWP of Shirdi and peripheral area in the year 2001 to 2011 and the changing pattern of the same. According to census 2001 and in the same decade, highest MFWP (more than 40.1%) was recorded in western of the study area as well as 1 village from south and 1 from north east. Whereas 13 villages were recorded 30.1 to 40% MFWP they were situated mostly in the north and south of Shirdi city. But 4 villages namely KelwadKh and Bk, Shirdi, Nimgaon and Korahale were recorded 10.1 to 20% MFWP. Whereas less than 10% MFWP shown in only one village which is situated in North West of the study area namely Ghari. As compare to this, according to census 2011, it is observed that there is a tremendous change in MFWP. The highest (more than 40.1%) MFWP is recorded in western part of the study area, 2 villages from north east and three villages from south. Whereas it is also observed that the villages around Shirdi city are recorded 20.1 to 40% MFWP. But 3 villages namely Shirdi city and NandurkhiKh and RanjangaonKh. shows lowest (0.0 to 1%) MFWP in the study area. The last sub map shows the changes in the MFWP of Shirdi and peripheral area from 2001 to 2011. According to this map negative change belt passes through the north to north west and from center to south east. As well as 3 villages from west and 1 village from east of the study area also shows negative change in MFWP and remaining all the villages shows positive change in the MFWP in the study area. It is also observed during the census period that no one village has recorded 'no change'.





6. Conclusion

Basically occupations are divided in to 3 categories based on their structure of working namely primary, secondary and tertiary. These occupations are done by the people. The overall development of any region is depends upon the population of that region. In Shirdi peripheral area various occupations are found. Most of the people of these regions are

engaged in various occupations e.g. agriculture, Sales of various goods and commodities, providing various Services to the tourist etc. In Shirdi peripheral area out of 42 villages it is observed that in 23 villages positive and in 19 villages negative changes in total working population is observed. In main working population 12 villages are recorded positive changes and 30 villages are recorded negative changes. In marginal

working population 11 villages are recorded positive changes and 31 villages are recorded negative changes. Whereas In main agricultural labour working population 17 villages are recorded positive changes and 25 villages are recorded negative changes. And in marginal agricultural labour working population 8 villages are recorded positive changes and 33 villages are recorded negative changes and one village recorded no change. In main cultivable labour working

population 17 villages are recorded positive changes and 25 villages are recorded negative changes. As well as in marginal cultivable labour working population 19 villages are recorded positive changes and 12 villages are recorded negative changes and one village recorded no change. In main H.H working population 23 villages are recorded positive changes and 19 villages are recorded negative changes.

Reference

1. Census of India (1981, 1991, 2001, 2011). 'District Census Handbook of Ahemdnagar', Maharashtra series.
2. Chandana R. C. (1986). 'A Geography of Population' Kalyani Publishers, New Delhi. P/p. 217.
3. Cleark John I. (1972). 'Population Geography', Pergmon Press Oxford. Pp. 88-89.
4. Gosal G.S. (1960). 'Occupational structure of India Rural Population. A Regional Analysis. National Geographical Journal of India, Vol. VI, P/p 14.
5. KoliAnju and Kothari Sadhana (1996). 'Occupational structure of population in Rajasthan. A Spatial analysis, Indian Journal of Regional Science, Vol. XXVII, No. 2 P/p 63.
6. Pant. R. (1992). 'Occupational Changes in Himalayan Towns: A case Study of Kumaun National Geographer, Vol. XXVII, No. 2 P/p 63.
7. Sean Lowery and Allen G. Noble (2000). 'The Changing Occupational Structure of the Amish of the Holmes Country, Ohio Settlement. The Great Lake Geographer, Vol. 7 No.1 P/p 26 to 37.