

# An Assessment of Factors Associated with the Student's Psychology and Its Impact on their Performance

Ravi

Extension Lecturer of Psychology, Govt. College Meham MDU Rohtak (India)

---

## ARTICLE DETAILS

### Article History

Published Online: 13 March 2019

### Keywords

Diligent Work, Past Tutoring, Time Distribution for Contemplates, Guardians' Level of Pay and Numerous Examinations

---

## ABSTRACT

Determinants of students' performance have been the subject of continuous open deliberation among teachers, scholastics, and approach creators. There have been numerous examinations that looked to analyze this issue and their discoveries indicate out diligent work, past tutoring, guardians' instruction, family salary and self inspiration as factors that significantly affect the students GPA. A large portion of those examinations have concentrated on students' performance. Notwithstanding, since social contrasts may assume a part in forming the factors that influence students' performance, it is critical to inspect those pertinent factors to the Indian society. The point of this examination is to research the financial attributes of students of the College of Business and Economics in connection to these students' performance and considering Business relating to the Indian Society. Utilizing an example of 864 CBE student and relapse examination, our outcomes demonstrate that the most vital factor that influences student's performance is the student's skill in English. Other than fitness in English, students who take an interest in class exchange and those on leave outflank different students. The factors that adversely influence student's performance the most are missing excessively numerous addresses and living in swarmed family. Numerous experimental investigations are completed to investigate factors influencing understudies' performance. The focal point of this exploration is that student performance in middle of the road examination is related with students' profile comprised of his demeanor towards participation in classes, time distribution for contemplates, guardians' level of pay, mother's age and mom's instruction. The examination depends on student profile created on the bases of data and information gathered through study from students of a gathering of private universities. Open segment educational organizations are not the focal point of this examination.

---

## 1. Introduction

Determinants of students' performance have been the subject of continuous open deliberation among teachers, scholastics, and approach creators. There have been numerous examinations that looked to analyze this issue and their discoveries indicate out diligent work, past tutoring, guardians' instruction, family salary and self inspiration as factors that significantly affect the students GPA. A large portion of those examinations have concentrated on students' performance [1]. Notwithstanding, since social contrasts may assume a part in forming the factors that influence students' performance, it is critical to inspect those pertinent factors to the Indian society. The point of this examination is to research the financial attributes of students of the College of Business and Economics-Indian in connection to these students' performance and considering Business relating to the Indian Society. Utilizing an example of 864 CBE student and relapse examination, our outcomes demonstrate that the most vital factor that influences student's performance is the student's skill in English. Other than fitness in English, students who take an interest in class exchange and those on leave outflank different students. The factors that adversely influence student's performance the most are missing excessively numerous addresses and living in swarmed family [2]. Numerous experimental investigations are completed to investigate factors influencing understudies' performance. The focal point of this exploration is that student performance in

middle of the road examination is related with students' profile comprised of his demeanor towards participation in classes, time distribution for contemplates, guardians' level of pay, mother's age and mom's instruction. The examination depends on student profile created on the bases of data and information gathered through study from students of a gathering of private universities. Open segment educational organizations are not the focal point of this examination [3].

## 2. Review of Literature

Chansarkar and A. Mishaeloudis (2011) [4], clarified the impacts of age, capability separate from learning place and so on student performance. The performance of students on the module isn't influenced by such factors as age, sex and place of home however is related with capability in quantitative subjects. It is additionally discovered that the individuals who live close to the college perform superior to different students.

Yvonne Beaumont Walters, kola soyibo,(2010) [5] additionally expounded that student performance is particularly reliant on SEB (financial back ground) as per their announcement, "Secondary school students' level of performance is with measurably critical contrasts, connected to their gender, review level, school area, school compose, student write and financial foundation (SEB)."

Kirby, Winston et al. (2012) [6] concentrated on student's eagerness (his chance rebate conduct) that impacts his own particular scholarly performance.

Goethe discovered that powerless students improve the situation when assembled with other feeble students. (As suggested by Zajonc's investigation of more established kin (2009) it demonstrates that students' performance enhances on the off chance that they are with the students of their own kind.

There are frequently extraordinary outcomes by gender, as in Hoxby's K-12 comes about (2000); Sacerdote (2011) [7] finds that evaluations are higher when students have uncommonly scholastically solid flat mates.

The aftereffects of Zimmerman (2011) were to some degree conflicting to Goethe comes about however again it demonstrated that students performance relies upon number of various factors, it says that powerless companions may lessen the evaluations of average or solid students.

(Alexander, Gur et al. 2010; Fraser, Beamn et al. 2011) [8] Clarified that a portion of the practices embraced by school organization in advanced education like private universities or sorted out investigation bunches likewise help to builds performance.

Keeping in see the majority of the factors examined by various scientists we have picked just those factors that are conspicuous in Pakistani setting.

### 3. The Objective of this Study

- To learn the different important examinations are already put into existing assortment of mastering creating various versions to look at the pupil performance however a big part of the investigations trusted the progressed created social orders as their environment.
- In order to use a setting including different less created countries for demand of info that is critical consequently as a start we've selected Pakistan as a surrogate for producing nations.
- The goal of the paper on the writing is twofold. First off, the unit tried is yet another mix of different variables in gathering nation's setting as Pakistan, i.e. moms grow older, contemplate hours, family pay, moms instruction, class participation rate. The next commitment is exhibiting the outcome of these variables on pupil performance in a similar environment.
- A noteworthy commitment of this particular study is based on the event of a massive impact of the component of mothers on students' performance.
- To learn the centering distinctive factors which affect pupil performance would help us with improving pupil through coping with the profile of theirs.

### 4. Methodology

Measurable strategies including relapse investigation were

utilized as a strategy. Information gathered was essential through a very much characterized poll. An example of private universities was taken where these variables were perceived and reaction was clear and reasonable. Open area educational foundations were not the focal point of this investigation. An example of 300 students was taken from a gathering of schools. Students were gathered in a classroom they were informed obviously about the survey and it went up against normal 30 minutes to fill this poll. Choice of students was indiscriminately. Out of these students, just those were chosen indiscriminately who were intentionally eager to fill the surveys [9].

The information was gathered utilizing a poll administrated by the educators of the graduate class in the fifth month of fourth year. The survey managed chiefly with student profile in light of his demeanor towards think about, strictness, participation, age, past scholarly accomplishments, and so on. Every one of the 300 polls was loaded with the reaction rate of 100% out of which 75 were females and 225 were guys.

The example age structure was from 18 years to 22 years old at most extreme since Punjab University of Pakistan doesn't permit students more than 22 years old to be conceded in graduate classes.

### 5. Hypothesis

To check these connections a speculation is shaped in light of student profile created on the bases of data gathered through survey and it is expected that the student is carrying on his profile as it is

H0: Student's attitude towards participation in class, hours spent in think about on every day bases after school, students' family salary, students' mom's age and mom's instruction are fundamentally related with student performance.

### 6. The Model

Simple linear regression analysis were used to test the hypothesis

Coefficients are  $b_1$ ,  $b_2$ ,  $b_3$ ,  $b_4$ , and  $b_5$

### 7. The Data

A student profile was created on the bases of data and information gathered through study to clarify student's attitudes towards logical variables. The main variable "participation in class" clarifies student's attitude towards class participation, which mirrors his level of enthusiasm for learning. Student's attitude towards time administration for ponders is reflected through the quantities of hours spent in consider after school on day by day bases, is taken as second factor. Third factor of the investigation is family pay that mirrors the solaces and offices accessible for contemplate. The fourth and fifth variables are mother's age and mom's training individually expecting that in Pakistan's culture moms assume an essential part at home and in regards to student's performance due to direction and control. It is watched while meeting that dad stay missing from home because of their activity hours so they assume a minor part in regards to the student performance in

Pakistani setting [10].

Student performance in middle of the road examination is taken as reliant variables and rest of the variables, which build student profile, are taken as autonomous variables.

This table clarifies expected connection of ward variables these normal relations are additionally legends swarming in

Pakistani society so the consequences of this examination are to acknowledge or rejects these fantasies. The table discloses student performance because of student's attitude towards considers in light of student's profile created on the bases of data and information gathered. It is expected that student is as yet conveying his profile as it is.

**Table 1: Expected Relations with Dependent Variable**

Variable	Expected relationship	Explanation
Attendance in class	Positive	A regular student is more serious in studies
Family income	Positive	It is assumed affluence gives more facilities to learn
Study hours per day after college	Positive	It is assumed that more study hours results in good grade/ division/ performance
Mother's age	Negative	More age means less control on children
Mother's education	Positive	Educated mothers help the children to improve

**8. Exogenous (independent) variables**

- **ATT=** Attendance %age, it represents just how many sessions pupil attends in a week which shows approach and seriousness towards studies.
- **SH=** Study time, it represents just how many hours a pupil gets to spend on study after joining the class in college once again it shows just how much serious the a pupil takes the studies.
- **FI =**Family income, it belongs to the degree of affluence of the pupil, just how much facilities, comforts the pupil is able to get.
- **ME=**Mothers grow older, it shows the command of the mother because in Pakistani setting the job of the mom is staying at look and home after the house, children and so our perception is the fact that aged mothers are with reduced control as than young mothers
- **ME=** Mothers education, in the same way if mothers are educated next there're able to help enhance the functionality of the pupils since they've to remain at home.

**9. Endogenous (dependent) variables**

Y = student's performance

The results of intermediate examination are taken as standard of student performance.

$$Y = a + b_1ATT + b_2SH+ b_3FI + b_4MA + b_5ME + U$$

**10. Data Measurement**

We quantified student performance by building up a student profile utilizing the greater part of the free factor. These variables clarify the attitude of the student towards studies and it is expected that the student convey his or her profile as it seems to be, the student develops keeping a similar profile or attitude towards the examination.

We are attempting to correspond the students' profile with his scholastic accomplishment in moderate class or one can state that the students' outcomes whatever they might be, in middle of the road examination or k12 according to European

models are the consequences of the profile he or she keeps. In

spite of the fact that the survey was open finished however later information gathered was changed over on 5-point Likert scale because of various kinds of answers for comfort in calculation [11].

Moms' age were estimated like beneath 35 years old is considered as youthful 35years to under 40years as moderately aged, 40years to under 45years to some degree matured, 45years to under 50years as matured or more 50years of age is considered as exceptionally matured keeping in see the way of life and traditions of early relational unions in a creating nation like Pakistan.

Additionally moms education was asked as, not instructed, can read n review to 08 long stretches of education, to some degree taught up to 12 long stretches of education, taught up to 14 long stretches of education and profoundly instructed up to 16 long stretches of education in light of the fact that in Pakistan PhDs are not as normal as in created nations so aces degree is considered as exceptionally instructed.

Family salary were asked per annum in five sections like underneath 10,000 as exceptionally poor, 10,000 to 20,000 as poor, third section were over 20,000 to 30,000 as center wage class, fourth section were over 30,000 to 40,000 as above working class and fifth section were over 40,000 as rich class.

Hours spent on thinks about in the wake of going to the school were asked in five sections, first was "I never contemplate in the wake of going to the school",

Second was "I ponder just when there are exams or test subsequent to going to the school", third was "yes I consider" if student is burning through one hour on thinks about in the wake of going to the school,

Fourth was "I am persevering" if student is burning through a few hours in the wake of going to the school and Fifth was "I am persevering" if student is burning through four to six hours in the wake of going to the school.

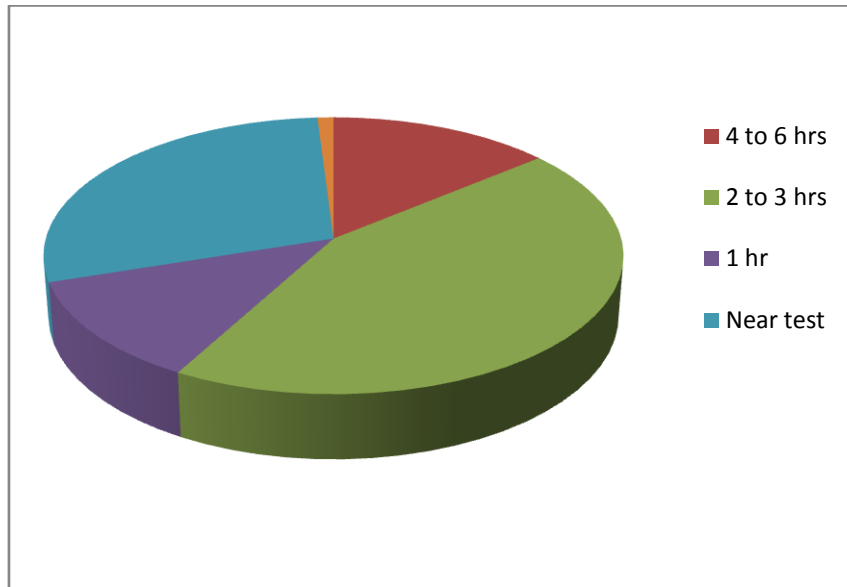
Attendance percentage was collected from college authorities and measured as ... highly irregular if it is less than 75% Irregular if it is 75% to less than 80% Somewhat regular if it is 80% to less than 85% Regular if it is 85% to less than 90% and Highly regular if it is above 90%.

Middle of the road comes about were gathered from school specialists and estimated as though student has guaranteed less than 40% it is taken as awful performance, poor performance if marks are 40% to less than half, normal performance if marks are half to less than 60%, great performance if marks are 60% to less than 70% and fantastic performance if marks are 70% or more. In Pakistan

examination is led on yearly bases (marks are arranged in first division, second division and third division) and keeping in see other examination measures we can't go for European reviewing gauges [12].

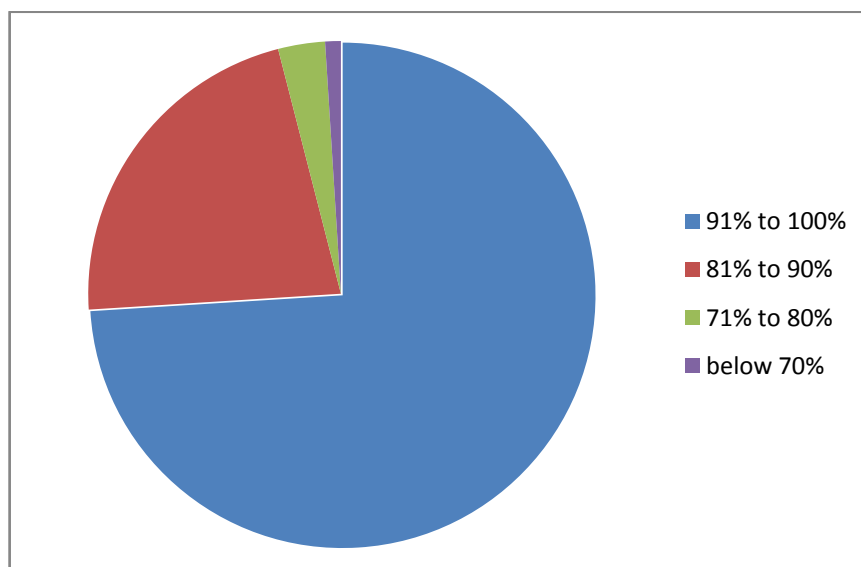
**11. Overview of Data Collected**

Student's attitude towards time portion for think about demonstrates that 44% of the example burns through 2 to 3 hours in contemplate on every day bases while 28% of the example considers close exam or test, generally this gathering of students is unconcerned with ponders which demonstrate that an appropriate timetable of tests and exam can keep students on track.



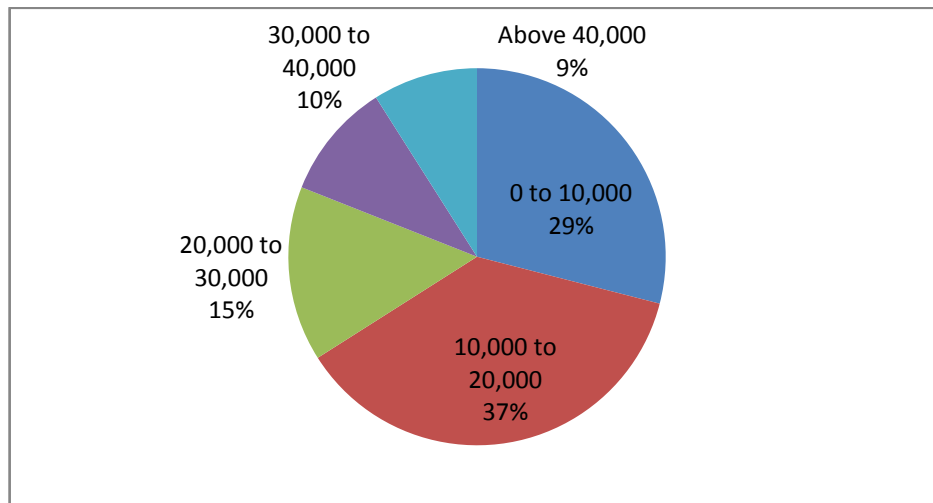
**Fig: 1 Study hours**

Students attitude towards attendance in class is reflected through the pie chart which shows that 74% of the students maintain their attendance from 91% to 100% and 23% from 81% to 90%.



**Fig: 2 Attendance Percentage**

Student's family income data shows that most belong to middle class family with 29% earning 10,000 and 37% from 10,000 to 20,000 rupees per month that makes it 66% of the total sample.



**Fig: 3 Family Income**

**12. Results**

We for the most part depended on numerous relapse methods for information examination in light of the multivariate relationship of our model.

Regression Statistics			
Multiple R	0.72139		
R Square	0.520403		
Adjusted R Square	0.400504		
Standard Error	0.084872		
F Stat	4.340334		
	Coefficients	Standard Error	t Stat
Intercept	-0.25313	0.361194	-0.70081
Attendance average	1.026912	0.335486	3.060963
Study hours	-0.00209	0.001226	-1.70222
Family income	-0.00000058	0.00000137	-0.42256
Mother Age	-0.00453	0.002895	-1.5643
Mother Education	0.012193	0.003649	3.341809

The R square value is .24, that demonstrates that student performance is the result of numerous financial and different factors as we construct our contentions in writing audit which

implies five of the variables together can clarify 24% of the performance of student; rest of 76% is clarified by different factors not said in our regression model.

**13. Comparison of Expected results and Result of the study**

Variable	Expected relationship	Explanation	Results of study
Attendance in class	Positive	A regular student is more serious in studies	Positive
Family income	Positive	It is assumed affluence gives more facilities to learn	Negative
Study hours per day after college	Positive	It is assumed that more study hours results in good grade/division/performance	Negative
Mother's age	Negative	More age means less control on children	Negative
Mother's education	Positive	Educated mothers help the children to improve	Positive

**14. Conclusion**

The target of this investigation was to evaluate the connection between the diverse factors that are viewed as dependable of influencing the students' performance alongside giving base to additionally examine with respect to student performance.

Choosing these mix of variables do have some objectivity in light of the fact that in a setting like Pakistan it is the need of time to feature the part of the half of the populace, similar to some other creating nation in Pakistan Fathers more often than

not stay missing from home because of their activity hours and ladies are as yet considered of less significance, less compelling and with least part, our examination have demonstrated that strengthening to moms on various fronts can prompt better taught society those students are performing great who are with instructed moms when contrasted with the individuals who are with ignorant moms. As It was expected that the connection between subordinate variable and student mother's education are emphatically related, this connection is acknowledged by the coefficient value 0.39735317 and positive exceptionally critical t-value 2.315477266 as it was accepted that informed moms can assist their kids with improving and

can keep appropriate mind their exercises.

Moms' age additionally had all the earmarks of being essential factor youthful moms can without much of a stretch handle their kids when contrasted with matured moms. As it was normal as a result of won legend that the connection between subordinate variable and student's mom age is contrarily related it is demonstrated by the coefficient value - 0.134639006 and negative irrelevant t-value - 0.826250959 in light of the fact that the matured moms have less control over their kids that influences the student's performance.

It was normal that the connection between subordinate variable and student attitude towards participation is certain on the grounds that consistency demonstrates the exertion and reality of student about his or her examinations. This connection is demonstrated by the coefficient value 0.372871617 and with critical t-value 1.28825936 in our investigation, which mirrors that normality in school, contributes in student's performance.

It is trusted that the connection between subordinate variable and student family pay is certain in light of the fact that cash can get all of you the solaces that you have to focus on your investigations however the outcome couldn't demonstrate

this connection in light of the fact that the coefficient value - 0.048344111 and negative immaterial t-value - 0.338615111 shows there is backwards connection. It implies students having a place with more prosperous/well-to-do family don't give appropriate weight to thinks about in spite of the fact that this value is little yet at the same time it mirrors the inconsequentiality of fortune i.e. luxuriousness cannot make a student genuine about his examinations or if a student needs to think about then wealth is anything but an essential. yet at the same time it requires more research to clarify this marvel.

It is still accepted emphatically that the connection between subordinate variable and student attitude towards time distribution for think about every day after school are decidedly related yet the outcome couldn't demonstrate this connection on the grounds that the coefficient value - 0.007522501 and negative unimportant t-value - 0.046346612 show there is a negative connection. It implies more investigation hours are not huge to the extent student performance is concerned. It might rely upon knowledge level, acumen, memory or technique for learning of the student despite the fact that this value is little yet it mirrors the impact of individual attributes of student. Additionally look into is required to investigate this connection.

## References

1. B. A. Chansarkar and A. Michaeloudis, (2001) Student profiles and factors affecting performance, *Int. j. math. educ. sci. technol.*, 2001, vol. 32, no. 1, 97–104, Pp 103-104
2. Baxter, A. and Hatt, S. (2000), 'Everything Must Go: A Study of Clearing and First Year Progression', *Journal of Further and Higher Education* Vol 24 No 1 pp5-14
3. C. Ricketts, S. J. Wilks, (2002), "Improving Student Performance Through Computer-based Assessment: insights from recent research "Assessment & Evaluation in Higher Education, Volume 27, Number 5, 1, pp. 475-479(5)
4. George R. Goethals (October, 2001), "Peer effects, gender, and intellectual performance among students at a highly selective college: a social comparison of abilities analysis" Discussion Paper-61
5. Gordon c. Winston, David j. immerman, (January 2003) "Peer Effects In Higher Education" NBER Working Paper No. 9501, JEL no I21
6. Hansen, Joe B. (April 2000), "Student Performance and Student Growth as measure of success: A evaluator's perspective" Paper presented at annual meeting of the American Educational Research Association New Orleans, Louisiana, April 25, 2000
7. Jessica Hoel, Jeffrey Parker, and Jon Rivenburg (August 2005) "A Test for Classmate Peer Effects in Higher Education" Institutional Research at Reed College.
8. Patrick J. McEwan, Kristen A. Soderberg (March 2004)"Roommate effects on grades: Evidence from first-year housing assignments" Social Science Summer Research Program at Wellesley College.
9. Russell, M., Haney, W. (January 1997), Testing Writing on Computers: An Experiment Comparing Student Performance on Tests Conducted via Computer and via Paper-and-Pencil, Volume 5 Number 3, ISSN 1068-2341.
10. Sacerdote, Bruce. (2001) Peer effects with random assignment: results for dartmouth roommates *The Quarterly Journal of Economics*, Volume 116, Number 2, 1 May 2001, pp. 681-704(24)
11. Yvonne Beaumont-Walters, Kola Soyibo (1998), "An Analysis of High School Students' Performance on Five Integrated Science Process Skills" *Research in Science & Technical Education*, Volume 19, Number 2 / November 1, 2001, Pp 133 - 145