

Household Size in Haryana: A Geographical Perspective

Avinash Kumar Singh

Ph. D. Scholar, Department of Geography, M.D. University, Rohtak (Haryana)(India)

ARTICLE DETAILS

Article History

Published Online: 13 March 2019

Keywords

Household size, Urban, Rural, Differential.

Corresponding Author

Email:avinash2942@gmail.com

ABSTRACT

This paper utilizes district-level data on the rural and urban household size in Haryana for the year 2001 and 2011. There are two main objectives of this present paper to study the trend of household size, and differences between rural-urban household. This work is based on secondary data and collected from census of India 2001 and 2011. The data is tabulated and calculated the differential between household size during 2001 and 2011. According to Census of India, the average size of the household is i.e. 5.7 and 5.2 persons per household in 2001 and 2011 respectively. The researcher has established a negative correlation between the level of urbanization and household size ($r = -0.46$), a positive correlation between household size and a number of never-married plus widowed and divorced persons in the total population ($r = 0.35$).

1. Introduction

Census of India (1991) referred household as "a group of persons who commonly live together and would take their meals from a common kitchen unless the exigencies of work prevented them from doing so. A household may comprise of persons related with blood or of unrelated persons or have a mix of both (Census of India, 1991)".

"The studies on household size contribute a significant in the area of experiencing declining population growth which influences through significant changes in living arrangements" (Singh, 2018). The pace of declining household size of in rural areas is directly related to emigration because of backward effect of economic growth like as industrial, urban infrastructure and emerging of new metro cities.

Levy (1985) analyzed that fertility and household size are associated with socio-cultural and socio-economic aspects in developing countries. The cultural expectation of social security by old age people from their children is determinant as household size (Rani, 1986).

The household size is connected to the children as risk insurance (Robinson, 1986). The education level, psychological status, and individual perception towards society are determinants of fertility rate and household size. Geographers have analyzed the extent of fertility and household size depends on individual's family backgrounds, social, psychological characteristics and economic status (Chandana, 2006).

Blake (1986) has established an inverse interconnection between social class and household size. Wagner et al., (1985) have referred that some variables are associated with the small size of the family these are higher education level, late marriage, a longer gap between marriage and the birth of the first child and employment condition. This study is attempted to explain the spatial pattern in the changes of household size in Haryana using district-level data of 2001 and 2011.

Household size directly affects quality of living space as well as in household composition. Several numbers of indicators of demographic, socio-economic changes, and household changes are neither uniform in their social and spatial content (Nayak, 2014). It may be notable to examine district-level variation in the size of the household change that is unfolding in Haryana in last decade.

2. Objectives

The present study is intended to address the main objectives are as under:

1. To examine the trend of household size in Haryana.
2. To find out spatial differences in household size of rural and urban in Haryana.

3. Hypothesis

- i. The contrary to the general thought, population growth did not only have positive change but also some negative outcomes in relation to the size of household.
- ii. The degree of change in terms of population growth, migration, urbanization, religion, will be related to the variation in the size of household.

4. Database and Methodology

The present work is based on secondary sources of data. All secondary data are collected from a census of Haryana for 2001 and 2011. The data like the district-level household size has been collected from the HH01 table, marital status data from C-2 table and number of workers from the B-1 table. The correlation calculated household growth, level of urbanization literacy rate, per cent of never married a person and others by using Spearman's Rank co-relation method such formula has been used:

$$\rho = 1 - \frac{6 \sum d_i^2}{n(n^2 - 1)}$$

Where $d_i^2 = R_1 - R_2$ is the difference between ranks of two variables, and n is the total number of observations

To achieve the expected results, the index of the average size of household is calculated by i.e. Index of the mean size of household = $\frac{\text{Total number of Population}}{\text{Number of Households}}$

ArcGIS is also used as a cartographic tool to make maps of the variation in the size of household in India.

5. Determinants of Household Size

The factors that determine the size of the household are listed as follows:

- Educational Attainment
- Household Status- Joint or Nuclear.
- Natural Increase Rate- Birth and Death rate patterns.
- Migration Behaviour- It can be in the household or an individual.
- Marital Status- With particular reference to age at marriage and residential affiliations of never married, widowed and divorced persons.
- Economic Forces
- Demographic Forces
- Family Labour Forces

Population, Household Growth, and Household Size: 2001 - 2011

According to (2011) Census, Haryana has a population of 254 million, an increase from 211 million in 2001. The total population growth during 2001 – 2011 was 19.90 percent. In 2001, the figure was 2.06 percent. In 2011, 65.57 per cent of couples in Haryana lived in single families. Out of the total population of Haryana, 34.88 per cent of the population lives in urban places and 65.12 per cent lives in the villages.

In 2011, the sex ratio in Haryana was 877 females per 1000 males. The total population of villages in Haryana state is 165 million. In Haryana, the literacy rate for males and females stood at 81.55 per cent and 51.96 per cent in rural areas while 83.14 per cent in urban places. In urban places, the literacy rate for males is 88.63 per cent and the female literacy rate is 65.98 per cent. Haryana has 48 million households in 2011 and 36 million in 2001. In 2011, the total household growth was 31 per cent but the population growth was 20 per cent, because Haryana has increased the number of nuclear families during 2001 – 2011.

Table 1.1 shows that the population growth rate has been 20 per cent. The growth rate of Panipat (35 per cent), Mahendragarh (32 per cent) and Kurukshetra (32 per cent) witnessed the highest population growth in Haryana (Census of India, 2011).

Districts	Table 1.1: District-wise Distribution of Population, Households & Household Size: 2001-2011					
	2001			2011		
	Households	Population	Household Size	Households	Population	Household Size
Panchkula	91,748	4,55,626	5.0	116,195	5,50,022	4.7
Ambala	1,83,158	9,96,945	5.4	2,22,514	11,14,858	5.0
Yamunanagar	1,82,562	10,34,467	5.7	2,34,926	12,09,440	5.1
Kurukshetra	1,41,865	8,12,794	5.7	1,86,849	9,52,125	5.1
Kaithal	1,64,055	9,44,353	5.8	2,03,515	10,69,296	5.3
Karnal	2,23,113	12,62,315	5.7	2,90,964	14,97,359	5.1
Panipat	1,73,821	9,63,882	5.5	2,33,814	11,95,988	5.1
Sonapat	2,21,804	12,63,372	5.7	2,76,409	14,40,264	5.2
Jind	2,04,505	11,84,917	5.8	2,49,141	13,30,884	5.3
Fatehabad	1,41,217	8,01,505	5.7	1,80,067	9,38,805	5.2
Sirsa	1,93,455	11,07,004	5.7	2,45,504	12,85,800	5.2
Hisar	2,71,303	15,20,751	5.6	3,33,516	17,24,305	5.2
Bhiwani	2,45,575	14,15,995	5.8	3,10,258	16,27,928	5.2
Rohtak	1,67,049	9,32,838	5.6	2,06,526	10,56,101	5.1
Jhajjar	1,57,454	8,75,194	5.6	1,84,455	9,53,337	5.2
Mahendragarh	1,34,143	8,06,123	6.0	1,70,824	9,16,758	5.4
Rewari	1,34,336	7,58,160	5.6	1,77,753	8,97,972	5.1
Faridabad	2,71,951	16,43,318	6.0	3,56,820	17,97,493	5.0
Gurgaon	3,90,487	21,87,387	5.6	3,25,239	15,01,460	4.6
Mewat	NA	NA	NA	1,59,858	10,86,711	6.8
Palwal	NA	NA	NA	1,70,618	10,39,880	6.1
HARYANA	36,93,601	2,09,66,946	5.7	48,35,765	251,86,786	5.2

Source: Census Data, 2001 & 2011. Note: Not available (NA)

Household Size by Residence in Haryana: 2001 - 2011

According to census, the average household size in Haryana represents 5.7 and 5.2 persons per household in 2001 and 2011. The rural household size is about 5.9 and 5.4 persons per household and 5.2 and 4.9 persons per household

in urban areas. In 2011, a comparison of the mean household size with the last decade depicted that the mean household size is gradually decreasing over time (table 1.2).

Out of 21 districts, only two districts have more than 6 persons per household. There is no change in rural and urban

household in Mahendragarh district. Two districts have curved out from Faridabad between 2001 & 2011 i.e. Mewat and Palwal. Mewat district has muslim dominant joint family. So, it has largest household size (6.9 persons per household) in Haryana. The districts which have large number of household

size in both years are Faridabad, Gurgaon, Bhiwani, Kaithal, Jind, and Bhiwani. The trend is positive from the census year 2001 to 2011, where it has been decreased from 5.7 to 5.2 persons per household (Fig. 1.3 & 1.4).

Table 1.2: District-wise Household Size trends by Residence in Haryana: 2001-2011

Districts	Mean Households Size					
	2001			2011		
	Total	Rural	Urban	Total	Rural	Urban
Panchkula	5.0	5.5	4.5	4.7	5.3	4.4
Ambala	5.4	5.8	4.9	5.0	5.3	4.7
Yamunanagar	5.7	6.0	5.2	5.1	5.4	4.8
Kurukshetra	5.7	5.9	5.2	5.1	5.2	4.8
Kaithal	5.8	5.8	5.5	5.3	5.3	5.1
Karnal	5.7	5.8	5.2	5.1	5.3	4.9
Panipat	5.5	5.8	5.2	5.1	5.3	4.9
Sonapat	5.7	5.8	5.4	5.2	5.3	5.0
Jind	5.8	5.9	5.5	5.3	5.4	5.2
Fatehabad	5.7	5.7	5.4	5.2	5.3	5.1
Sirsa	5.7	5.8	5.4	5.2	5.3	5.0
Hisar	5.6	5.8	5.2	5.2	5.3	5.0
Bhiwani	5.8	5.8	5.5	5.2	5.3	5.1
Rohtak	5.6	5.7	5.3	5.1	5.2	5.0
Jhajjar	5.6	5.7	5.2	5.2	5.2	5.0
Mahendragarh	6.0	6.0	5.9	5.4	5.4	5.4
Rewari	5.6	5.7	5.5	5.1	5.1	4.9
Faridabad	6.0	6.3	5.2	5.0	5.8	4.9
Gurgaon	5.6	6.7	5.0	4.6	5.3	4.4
Mewat	NA	NA	NA	6.8	6.9	6.1
Palwal	NA	NA	NA	6.1	6.2	5.7
HARYANA	5.7	5.9	5.2	5.2	5.4	4.9

Source: Census Data, 2001 & 2011.

The Rural-Urban Differences in Household size

As per census, mean household size is quite similar 5.7 and 5.2 persons per household in 2001 & 2011 respectively. The overall picture shows that mean household size revealing the status of equilibrium around the 5.2 persons per household in 2011. It has been noticed that in the last decade the joint family in the urban places was almost as high as in the rural areas. The small joint family is almost typical form of family life amongst the middle and upper middle urban economic classes in India.

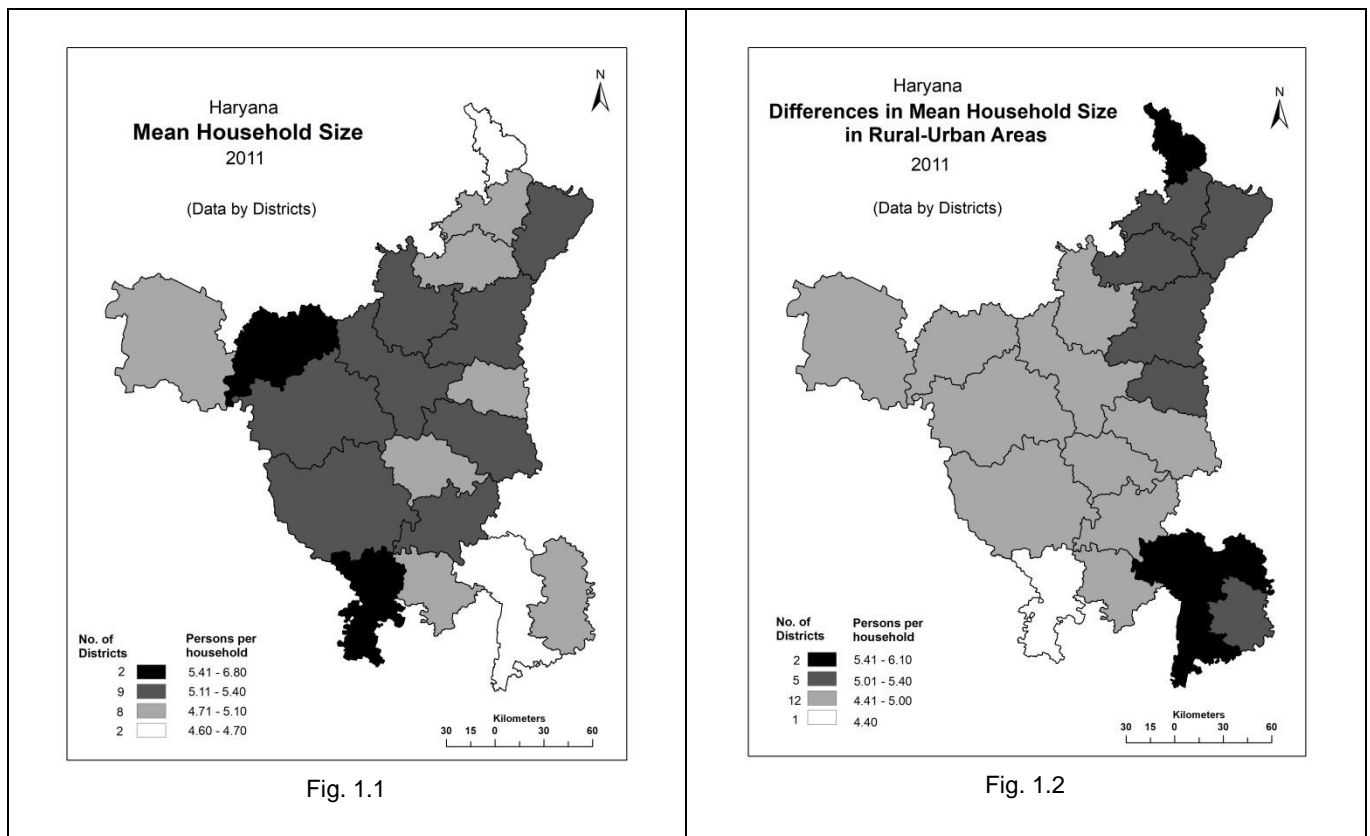
The rural-urban differential has not been consistent, but it is varying from decade to decade (table-1.3). The increased differential is because of the household size in rural constantly increase than the size of urban household. The growth rates of household size in rural areas were positive from 2001 to 2011 i.e. 0.7 to 0.5 respectively. The urban counterpart also shows stable status during this tenure. The overall difference in rural-urban household size revealed that increase and decrease of household difference rely on the trend of household in rural and urban household growth (Fig.1.2 & 1.6).

Table 1.3: Rural-Urban Difference in Households Size: 2001-2011

Districts	Households Size & Differences by Residences					
	1991			2011		
	Rural	Urban	Differences	Rural	Urban	Differences
Panchkula	5.5	4.5	1.0	5.3	4.4	0.9
Ambala	5.8	4.9	0.9	5.3	4.7	0.6
Yamunanagar	6.0	5.2	0.8	5.4	4.8	0.6
Kurukshetra	5.9	5.2	0.7	5.2	4.8	0.4
Kaithal	5.8	5.5	0.3	5.3	5.1	0.2
Karnal	5.8	5.2	0.6	5.3	4.9	0.4
Panipat	5.8	5.2	0.6	5.3	4.9	0.4
Sonapat	5.8	5.4	0.4	5.3	5.0	0.3

Jind	5.9	5.5	0.4	5.4	5.2	0.2
Fatehabad	5.7	5.4	0.3	5.3	5.1	0.2
Sirsa	5.8	5.4	0.4	5.3	5.0	0.3
Hisar	5.8	5.2	0.6	5.3	5.0	0.3
Bhiwani	5.8	5.5	0.3	5.3	5.1	0.2
Rohtak	5.7	5.3	0.4	5.2	5.0	0.2
Jhajjar	5.7	5.2	0.5	5.2	5.0	0.2
Mahendragarh	6.0	5.9	0.1	5.4	5.4	0.0
Rewari	5.7	5.5	0.2	5.1	4.9	0.2
Faridabad	6.3	5.2	1.1	5.8	4.9	0.9
Gurgaon	6.7	5.0	1.7	5.3	4.4	0.9
Mewat	NA	NA	NA	6.9	6.1	0.8
Palwal	NA	NA	NA	6.2	5.7	0.5
HARYANA	5.9	5.2	0.7	5.4	4.9	0.5

Source: Author's calculation of census data, 2001 & 2011.



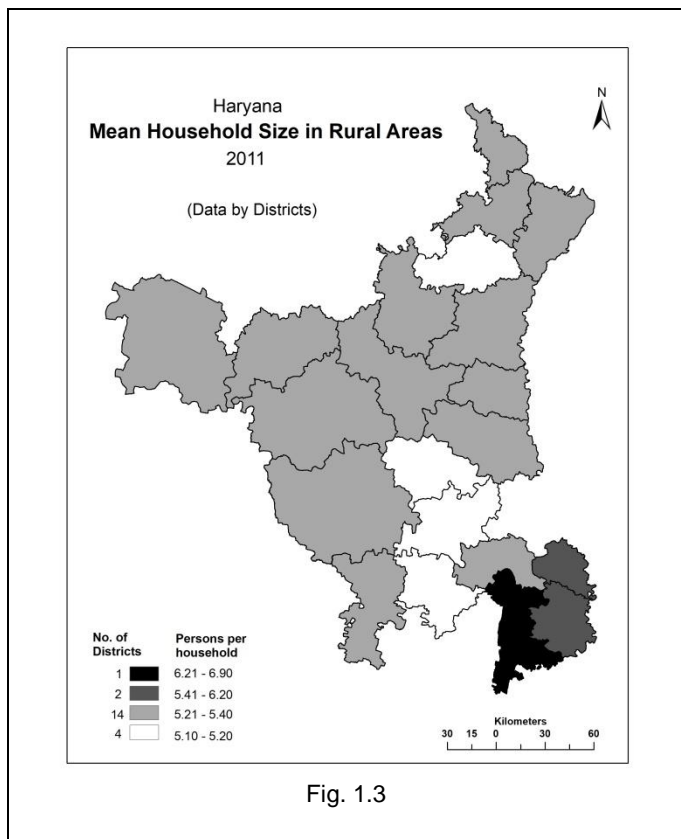


Fig. 1.3

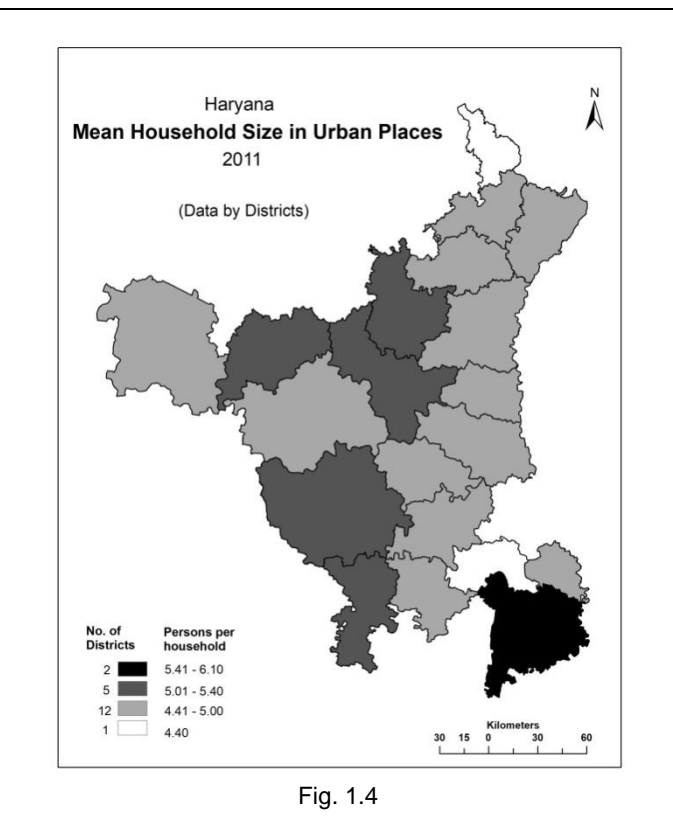


Fig. 1.4

Table 1.4: District-wise Household size, Differences, Household Growth, Population Growth

Districts	Average Size of Household		Rural-Urban Differences	Growth Rate in Households (%)	Growth Rate in Population (%)	Level of Urbanization (%)
	1991	2011	(2001 – 2011)	2011	2011	2011
Panchkula	5.0	4.7	-0.3	27	21	54.87
Ambala	5.4	5.0	-0.4	21	12	44.38
Yamunanagar	5.7	5.1	-0.6	29	17	38.94
Kurukshetra	5.7	5.1	-0.6	32	17	28.95
Kaithal	5.8	5.3	-0.5	24	13	27.97
Karnal	5.7	5.1	-0.6	30	19	30.52
Panipat	5.5	5.1	-0.4	35	24	45.97
Sonipat	5.7	5.2	-0.5	25	14	30.52
Jind	5.8	5.3	-0.5	22	12	22.82
Fatehabad	5.7	5.2	-0.5	28	17	19.05
Sirsa	5.7	5.2	-0.5	27	16	24.75
Hisar	5.6	5.2	-0.4	23	13	31.73
Bhiwani	5.8	5.2	-0.6	26	15	19.90
Rohtak	5.6	5.1	-0.5	24	13	42.10
Jhajjar	5.6	5.2	-0.4	17	9	25.39
Mahendragarh	6.0	5.4	-0.6	27	14	14.43
Rewari	5.6	5.1	-0.5	32	18	25.82
Faridabad	6.0	5.0	-1.0	31	9	79.44
Gurgaon	5.6	4.6	-1.0	-17	-31	68.82
Mewat	NA	6.8	6.8	100	100	11.38
Palwal	NA	6.1	6.1	100	100	22.65
HARYANA	5.7	5.2	-0.5	31	20	34.63

Source: Author's calculation of census data, 2001 & 2011.

Spatial Pattern of Rural-Urban Differentials in Household Size

The mean household is controlled by pace of natural growth differences between birth and death rate. The large household size is generally associated with joint family and high rate of birth rates. Although, in the spatial context the rate

of household growth is very due to fertility and mobility condition in place to place. The positive relation can be established between household growth and socio-economic status of area, place and regions.

In Haryana, mean household size differences is -0.5. The largest household size found in Mewat (6.8 persons per household) in 2011 while Mahendragarh (-0.6), and Faridabad (-1.0) have largest household in 2011. Mewat and Palwal districts have curved out from Faridaba. Panipat (-0.4), Mahendragarh (-0.6) and Rewari (-0.6).Gurgaon and Faridabad have largest change in rural and urban household

size. Household size has a significant change in rural and urban of Haryana districts Panchkula, Gurgaon, Faridabad and Mewat have noticed decrease in household size from 2001 to 2011. Mahendragarh district has zero difference during 2001 - 2011. From the figure 1.1, it can be observed that the rural household is high in National Capital Region districts like Gurgaon (-1.0), Faridabad (-1.0), Yammunagar (-0.6) and Mahendragarh. It can be observed that west Haryana has larger household size than eastern Haryana. Southern districts like Gurgaon, Rewari, Mahendragarh, Mewat, and Palwal have large household size. Thus, it can be stated that southern region is less developed (table-1.4).

Table 1.5: Differences in the Size of Household

Growth of Households for Major Religious Group in Haryana: 2001-2011		
Religious Group	Households	
	2001	2011
Hindu	32,99,799	4294635
Muslim	1,80,263	278585
Sikh	2,07,515	247848
Others	17,884	26332
Total	37,05,461	4847400

Source: Author's calculation of Census of India, 2011

From the Fig: 1.7, it can be observed that the rural household size is high in semi desert districts of Haryana. The districts areas are devoted to the agriculture sector. The requirement of labor can be attributed as a reason for high family size in rural areas in Haryana. In Fig 1.8, the urban household size is high in parts of National capital Region such as Faridabad, Gurgaon, Mewat, and Palwal. These areas account for joint family.

Some of the districts lacking behind in development constitute southeastern region in Haryana. The development and advancement in technology in southern Haryana has been the major reason for the stark difference in household size. Thus, it can be stated that the development plays a crucial role in population check. The average size of household at district level also has variation from Mewat (6.9) persons per household to Panchkula (4.7).

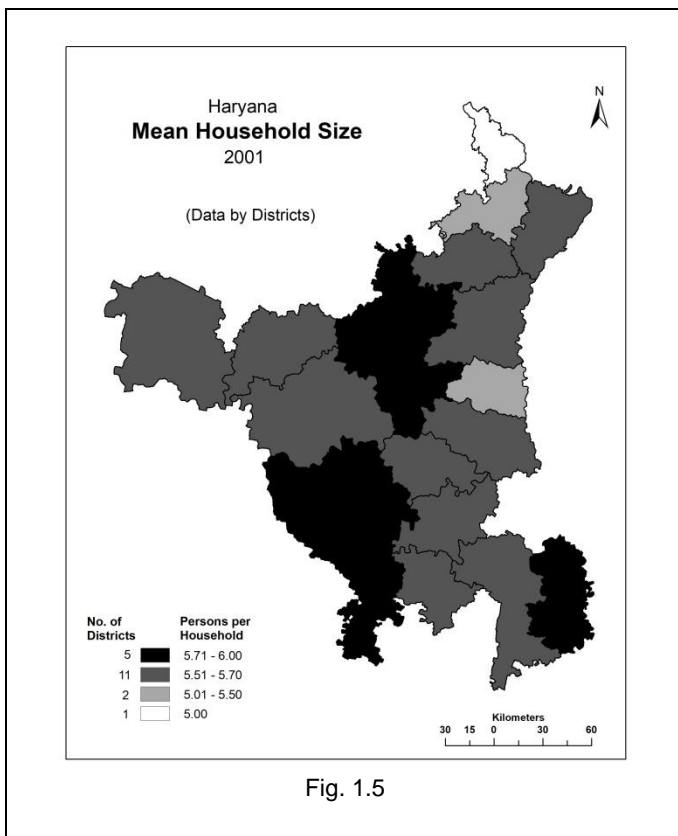


Fig. 1.5

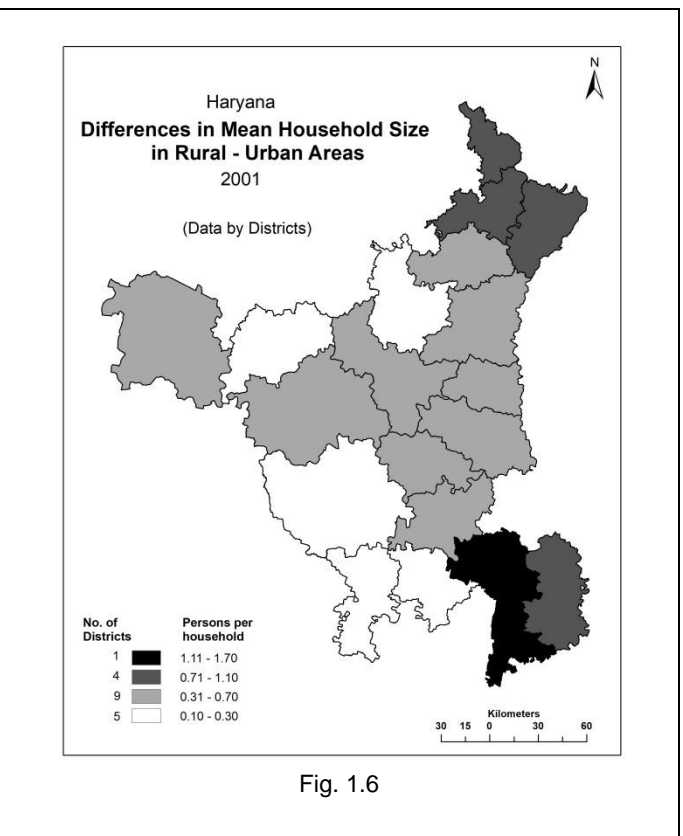


Fig. 1.6

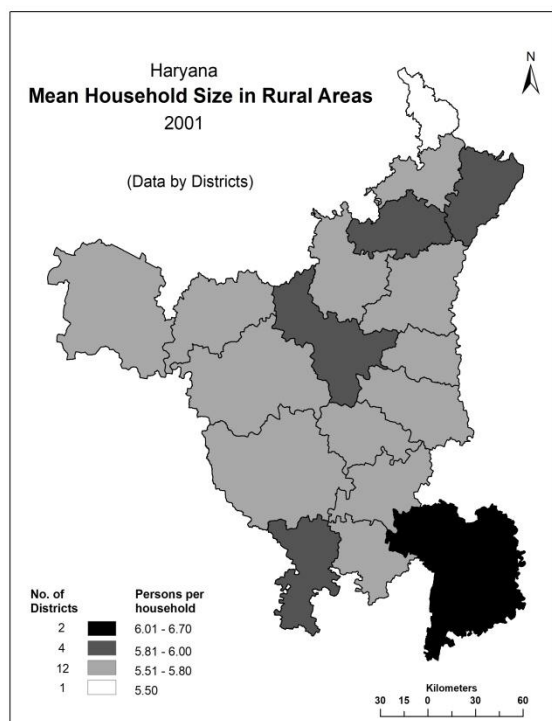


Fig. 1.7

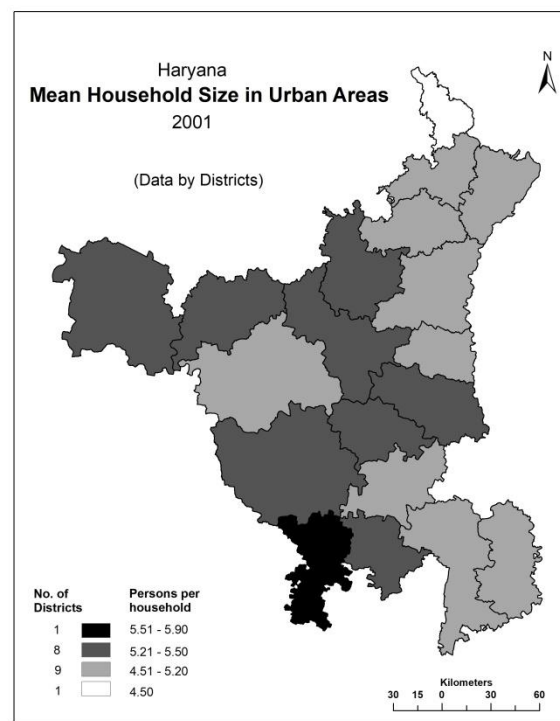


Fig. 1.8

6. Conclusion

The research has found that the rural household would be distinctly larger than the urban. The urban household in Haryana is only marginally smaller than the rural household. In the urban as well as rural the joint family is very common shows a slight difference in the size of household. The rural-urban difference and household size did not show any continuous interconnection. The regional differences in urban

household size are more similar in comparison to the rural household size.

The difference in rural-urban household size is correlated negatively with the level of urbanization in India ($r = -0.46$). The economic activities in urban areas have a major impact factor to urban household size. On the other hand, the rural household size depends on the literacy rate which also affects on the growth of population in rural areas. The use of contraceptive and family planning programs is also a factor for household size (Koenig et al., 1987).

References

- Blake, Judith (1986). Number of Siblings, Family Background and the Process of Educational Attainment. *Social Biology*, 33, 5–21.
- Chandana, R. C. (2006). Geography of Population Concepts, Determinants, and Patterns, New Delhi: *Kalyani Publishers*.
- Conklin, G. H. (1976). The household in Urban India. *Journal of marriage and the Family*, 38 (4), 771-779.
- Koenig, Michael A, et al. (1987). Trends in family size preferences and contraceptive use in Matlab, Bangladesh. *Studies in Family Planning*, 18 (3), 117-27.
- Levy, Victor (1985). Cropping Pattern, Mechanization, Child Labor and Fertility Behavior in a Farming Economy, Rural Egypt. *Economic Development and Cultural Change*, 33, 777–791.
- Marteletto, L. (2005). Family Size, Demographic Change, and Educational Attainment: a Case of Brazil. *Institute for Social Research*, PSC Research Report 05-584.
- Nayak, D. K. & Behera N. B. (2014). Changing Household Size in India: An Inter-State Comparison. *Trans. Inst. Indian Geographers*, 36 (1), 1-17.
- Primary Census Abstract*, 2011.
- Primary Census Abstract*, 1991.
- Rani, Usha D. (1986). Old Age Security Value of Children and Fertility in Relation to Social Policy. Paper presented at the annual meeting of the International Sociological Association.
- Robinson, W. C. (1986). High fertility as Risk insurance. *Population Studies*, 40, 289-298.
- Wagner, Mazie E, Herman J. P. Schubert, and Daniel S. P. Schubert (1985). Family Size Effects: A Review *Journal of Genetic Psychology*, 146, 65–78.
- <http://www.censusindia.gov.in/2011census/hh-series/hh01.html>
- <http://www.censusindia.gov.in/2011census/B-series/B-Series-01.html>
- <http://www.censusindia.gov.in/2011census/C-series/c-2.html>
- http://www.censusindia.gov.in/2011census/population_enum_eration.html