

Experimental Investigation on Furnace Burner Design for Thermal Power Plant Using CFD

¹Mr. Sachin Shantaram Patil , ²Dr Manoj K Chopra , ³Mr Vishwaraj S. Tayade

^{*1}PG Student, RKDF Institute of Science and Technology Bhopal,(MP) (India)

²Professor, Head Of Department, Dept. of Mechanical Engineering, RKDF Institute of Science and Technology Bhopal, (MP) (India)

³Assistant Professor, Department of Mechanical Engg. , SGDCOE Jalgaon , (MS) (India)

ARTICLE DETAILS

Article History

Published Online: 10 December 2018

Keywords

Furnace, burner, efficiency, analysis, optimization

Corresponding Author

Email: vishwarajmech[at]gmail.com

ABSTRACT

The furnace burner is designed and analysis has done to perform for different key parameters like burner velocity, burner angle, burner size and its configuration. The analysis of the above parameters is combined for the best combination of parameters with the objective function to maximize mixing efficiency in the burner which ultimately produces efficient combustion and reduces the losses in the mixing stage. The efficient combination of parameters produces cost saving design for better performance of overall plant. The base is design studied for different design parameters with objective function of increasing the turbulence intensity which may directly enhances the flame stability for proper mixing of fuel and air which leads to better combustion efficiency. This paper work can be extend for finding out the distribution of temperature inside the combustion chamber and emission can be predicted like CO, NOx by solving chemical kinetics with the model.

1. Introduction

Thermal power plants are one of the most important process industries for engineering professionals. Over the past few decades, the power sector has been facing a number of critical issues. However, the most fundamental challenge is meeting the growing power demand in sustainable and efficient ways. Practicing power plant engineers not only look after operation and maintenance of the plant, but also look after a range of activities, including research and development, starting from power generation, to environmental assessment of power plants. In thermal power plant, the chemical energy stored in fossil fuels such as coal, fuel oil, natural gas is converted successively into thermal energy, mechanical energy and finally electrical energy for continuous use and distribution across a wide geographic area. In the Rankine cycle, high pressure and high temperature steam raised in a boiler is expanded through a steam turbine that drives an electric generator.

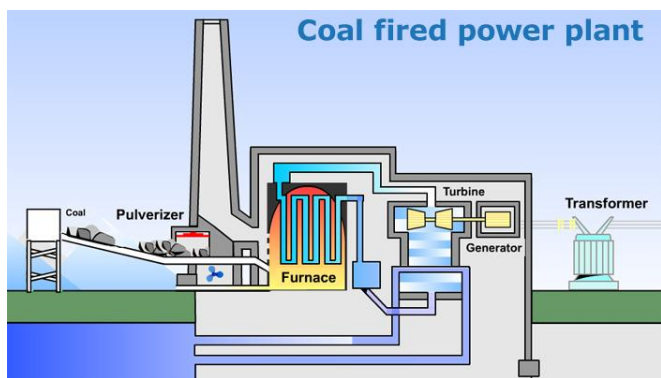


Figure 1.1: Components of thermal power plant

In order to design such efficient, clean, and economical brown coal combustion systems, the understanding of the brown coal reactivity and behavior under different operating conditions is required. Generally, brown coal has a number of

advantages such as abundance, low-cost, high reactivity, and low sulphur content. In despite of these benefits, a high moisture content (about 60-70% wt.) is the major disadvantage of brown coal. However, in the existing pulverized brown coal (PC) tangentially-fired boiler, a large amount of the hot exit flue gas, typically 50% of the total flue gas generated is reused to dry the brown coal within the mill-duct system. During that drying process by the hot gas off-takes (HGOTs), a large amount of water vapour is reproduced as well. In order to avoid any flame stability problems inside the combustion chamber, due to that evaporated steam, a fuel-rich mixture (mainly pulverized coal) is passed through the main burner ducts. Whilst a fuel-lean mixture, including water vapour, inert gases, and remaining of PC, is delivered to the inert burner ducts (upper burners). Computational fluid dynamics (CFD) modelling studies can comprehensively provide a wide range of information for the design of furnace and burner that can reduce the cost of time-consuming experimental investigations. The CFD has the ability to predict well the flame structure, gas temperatures distributions, chemical species concentrations, radiative heat transfer etc., under different combustion conditions.

Co-firing is particularly appropriate for a country such as Greece, due to the high capacity of lignite-fired power plants and the large contribution of indigenous lignite in the gross energy production. However, instead of the usual, typically high quality, biomass feed stocks used in co-firing projects, such as saw dust or wood pellets, co-firing initiatives in Greece will be on agricultural biomass due to the overall economics of the biomass supply chains compared to the costs of lignite. Despite the high availability of agricultural residues in Greece, the lack of mechanization for residue harvesting, high costs and other competing uses have shifted attention to the exploitation of energy crops for power generation. One of the crops that are considered in Greece is *Cynaracardunculus* (cardo) a perennial, herbaceous crop of Mediterranean origin well adapted to the xerothermic

conditions of Southern Europe, with a potential for high yields. Cardoon is currently cultivated in the Region of Western Macedonia in the frame of a regional development program, with the aim to produce biomass for utilization in the nearby Kardia power plant.

While the effect of co-firing cardoon with Greek lignite in a 300 MW tangentially fired boiler is observed with taking into account the major physical and chemical differences in the combustion process for cardoon and lignite. The firing scheme and the fossil fuel utilized influences the particle trajectories and combustion conditions explain the value of cardoon as a co-firing fuel. The main parameters to be investigated relate to fuel burnout, temperature and gas concentrations and NO_x formation. Results are evaluated on the basis of differences in the co-firing thermal ratio and the size of the biomass particles. However, co-firing studies with lignite on tangentially-fired boilers have been limited to solid-recovered fuels.^[2]



Figure 1.2: Central vortex & four corner burner's furnace configuration

Because of the peculiar aerodynamics of the tangentially fired furnaces, the flow inside the furnaces, as well as the combustion processes were found to be complicated for modeling. Still, comprehensive combustion large-scale tangentially fired furnaces, based on numerical solution of

three-dimensional differential conservation equations, have been the subject of many investigations.

2. Motivation

The performance of the Burner affects the overall performance of the combined-cycle power plant. An accurate simulation of the performance of the Burner is required to study its effect on the entire system. Use of computational fluid dynamics (CFD) as a tool to analyze the flow in different designs, it is clear that CFD has the potential to become a useful tool to validate the performance of the tangentially fired burner, and to make some design changes to it. The successful utilization of CFD as a tool in the design of the Burner and also performance on flame stability. This can be done only when the CFD tools are appropriately applied and validated using approaches and experimental results that accurately represent the flow and physics in the components of the equipments being modeled.

3. Problem Definition

- To design and optimize the furnace burner for 600MW plant
- To investigate the vortex strength of tangentially fired boiler, sustains the flame propagation for efficient combustion
- To investigate the effect of the following important parameters on vortex formation
 - Burner Angle
 - Inlet Velocity
 - Burner Size, Burner Mounting/configuration

4. Methodology

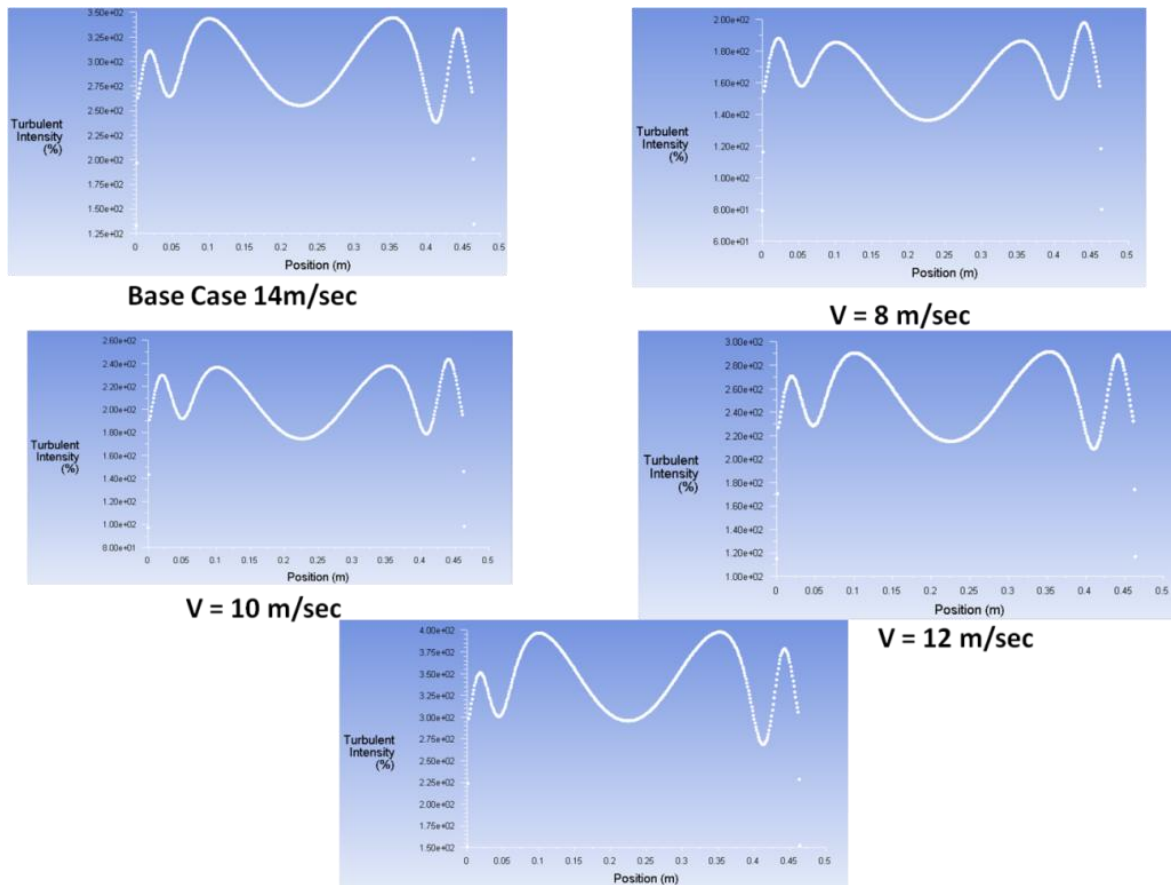
1. Modeling- Mathematical and numerical model
2. Turbulence Modeling
3. Burner model- geometrical and flow parameters of burner
4. Preprocessing- Grid generation
5. Experimental validation with numerical data
6. ANSYS Fluent- for CFD analysis of PC fired furnace

5. Experimental Evaluation & Discussion

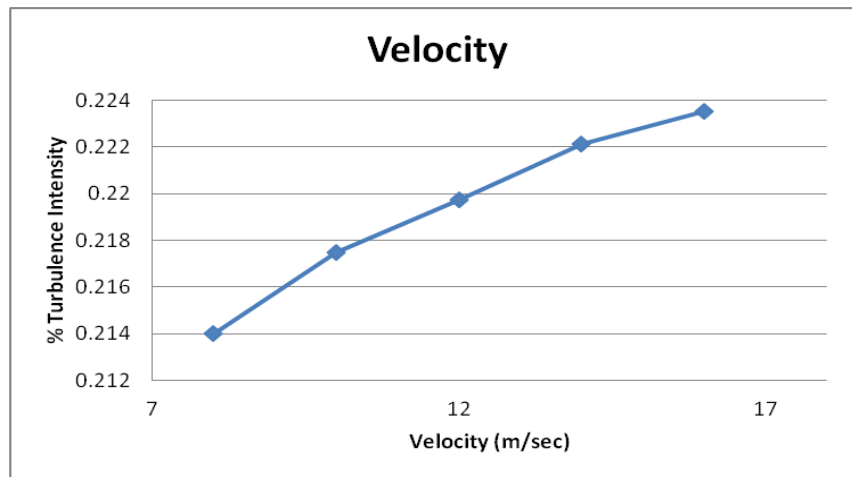
The furnace burner is designed and analysis is performed for different key parameters like burner velocity, burner angle, burner size and its configuration. The analysis of the above parameters are combined for the best combination of parameters with the objective function to maximize mixing efficiency in the burner which ultimately produces efficient combustion and reduces the losses in the mixing stage. The efficient combination of parameters produces cost saving design for better performance of overall plant.

4.1 Effect of Burner Velocity:

The turbulence intensity is checked for all the design variables for the velocity i.e. 8, 10, 12, 14, and 16 m/sec. Out of which the results are compared with the Base case results i.e. 14m/sec. The turbulence plots for different velocities are shown as below



Graph 4.1: % of Turbulence intensity at different positions for different velocities



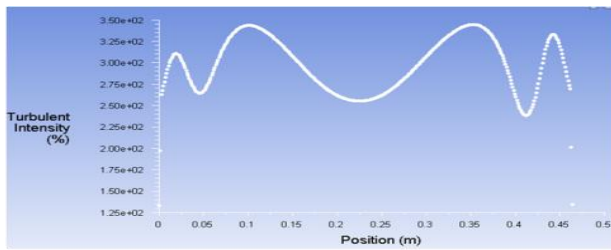
Graph 4.2: % of Turbulence intensity at different velocities

As the velocity increases of the flue gases, the momentum is increases which also increasing the pressure loss inside the furnace geometry but the increment in pressure is from 185 Pa to 200 Pa which is < 15% but the increase in the turbulence intensity in the middle core is from 315% to 365% i.e. >20%. Therefore the higher velocity is selected as the optimum parameter for enhancing the flame stability but beyond this

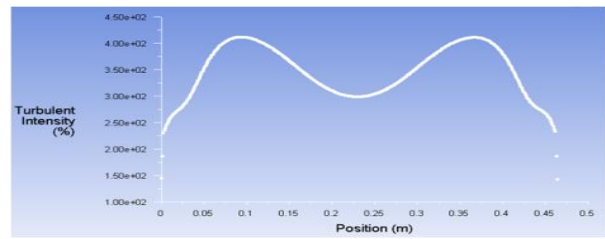
range there is no appreciable change in the turbulence. Optimum Velocity =16 m/sec is selected.^[14]

4.2 Effect of Burner Angle:

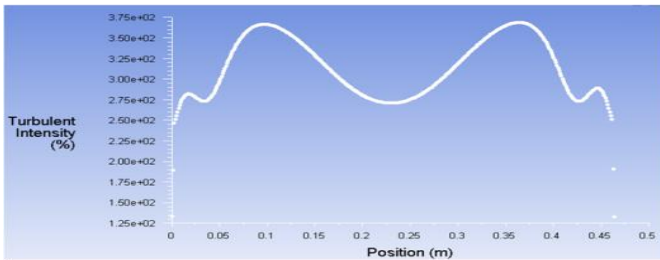
The turbulence intensity is checked for all the design variables for the Burner Angle i.e. (33°,61°),(43°,51°), (39°,55°) and (46°,48°). Out of which the results are compared with the Base case results i.e. (43,51). The turbulence plots for different angles are shown as below.



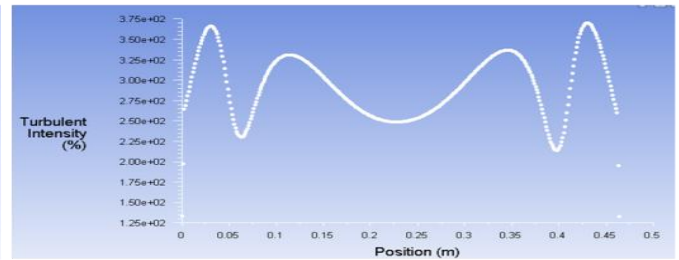
Angle :(43_51)



Angle :33_61

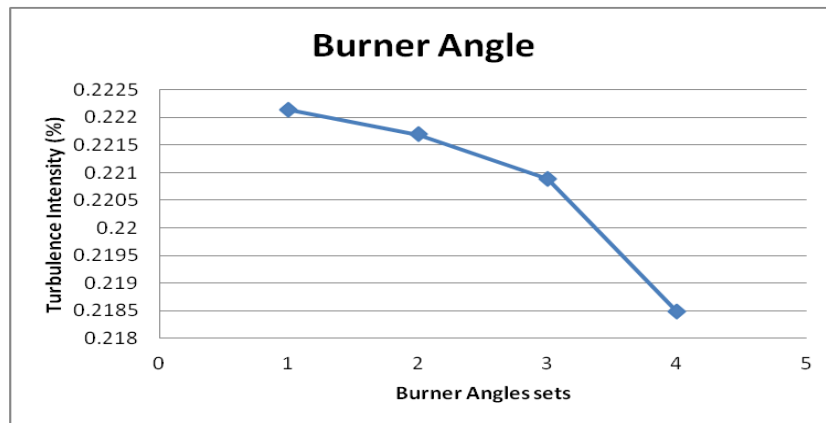


Angle : 39_55



Angle : 46_48

Graph 4.3: % of Turbulence intensity at different positions for different burner angle sets.

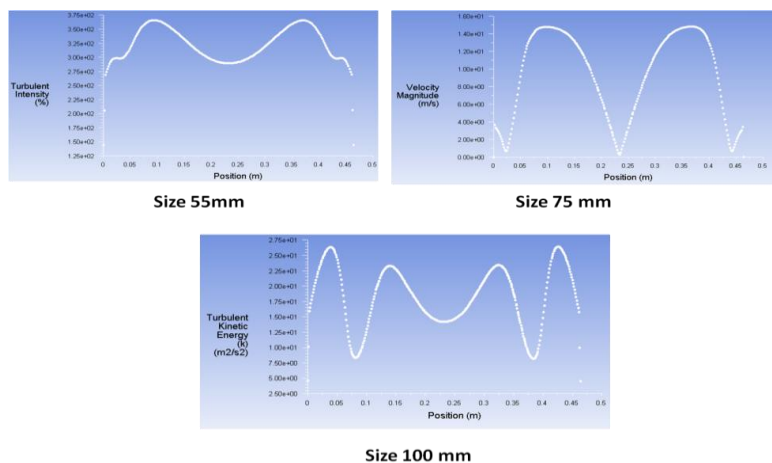


Graph 6.4: % of Turbulence intensity at different burner angle sets

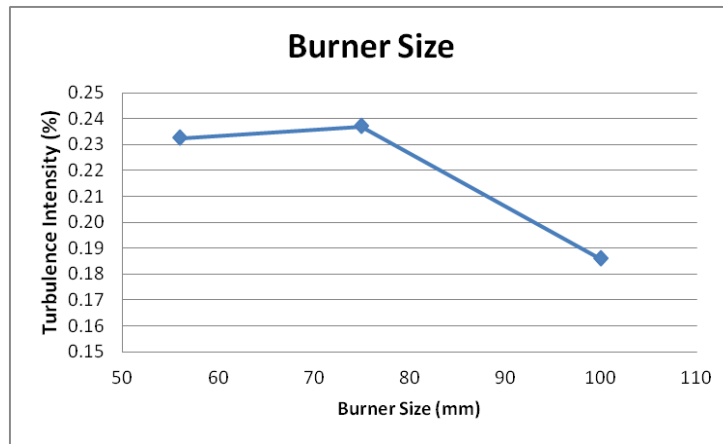
Increase or decrease in burner angle from the existing set up does not help in increasing in vortex strength as the change in burner angle is restricted due to the size of the furnace; the optimum vortex strength is achieved at set 1 i.e. existing set up which is kept fixed.

Burner Size decides the mass flow rate of air and fuel coming into the furnace for efficient combustion for the same flow velocity. The different burner sizes are studied for maximization of turbulence intensity of the mixture i.e. the flame stability.^[15]

4.3 Effect of Burner Size :



Graph 4.5: % of Turbulence intensity at different positions for different burner sizes.



Graph 4.6: % of Turbulence intensity at different burner size (mm)

4.4 Optimum Burner Design:

From the above analysis of different parameters, optimum design parameters are selected which produces better results among the selected combinations, individually.^[18] The study is performed to check the effect of different parameters on the burner efficiency which is directly related with the turbulence

intensity.^[19] The optimum parameters are analyzed sequentially and effect is checked separately keeping the others parameters constant for studying the single variable on flame stability. The optimum parameters are coupled together to analyze the optimum geometry effect.^[20]

Table No 1
Optimum Combination of parameters

Parameters	Optimum Range
Burner Size	75 mm
Burner Velocity	16 m/sec
Burner Angles	43 ⁰ , 51 ⁰
Configuration	(No.1) Four Burners at Corners

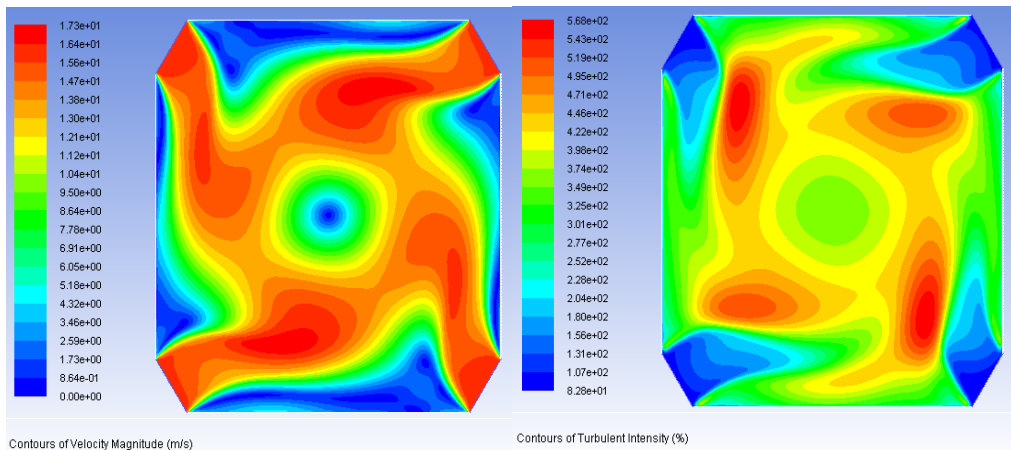


Figure 4.1: Contours showing velocity magnitude and turbulence magnitude for Burner Angle (43⁰,51⁰), Velocity 16m/s, size 75mm.

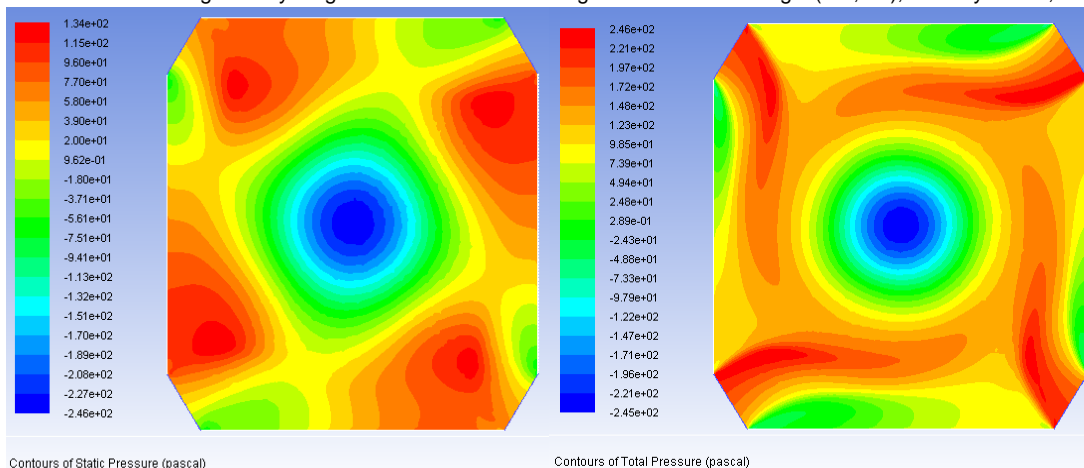


Figure 4.2: Contours showing Static and Total Pressure for Burner Angle (43⁰,51⁰), Velocity 16m/s, size 75mm.

Table 4.6: Comparison of optimum and base case

Configuration	Average turbulence Intensity	Max. (Circle region)	Total	%
Optimum case	3.93	310	1149	27
Base case	2.96	315	1418	22

For all optimum parameters design, enhancement of the turbulence intensity is observed i.e. 27.1% as well as avg. intensity also increases to 3.93 from 2.96.^[21]The above change in turbulence intensity makes the combustion process more effective and saves the cost of overall power generation process.

6. Conclusion

The following key points are concluded from the above analysis,

- Thermal power plant burner for 600 MW is studied for maximum flame stability.
- The base design is studied for different design parameters with objective function of increasing the turbulence intensity which directly enhances the flame stability for proper mixing of fuel and air which leads to better combustion efficiency.
- The effect of different parameters are studied on the vortex strength formed at the middle of circle for tangentially fired boilers

- The optimum parameters are coupled and analyzed for the optimum configuration which gives better efficiency than the base case, the intensity i.e. efficiency increases from 22% to 27%.
- The proposed model is quite robust to work for any Reynolds number and any size and configuration of the burner.
- The above change in turbulence intensity makes the combustion process more effective and saves the cost of overall power generation process.

Acknowledgment

I thanks from the bottom of my heart to Prof M. K. Chopra, Head of department, RKDF Institute of science and technology, who has been a great source of moral and timely support for completing the paper work I would like to thank our Principal Sir for his warm support .

References

1. Audai Hussein Al-Abbas, Jamal Naser, David Dodds, "CFD modelling of air-fired and oxy-fuel combustion in a large-scale furnace at Loy Yang A brown coal power station" *Fuel* 102 (2012) 646–665.
2. E. Karampinis, N. Nikolopoulos, A. Nikolopoulos, P. Grammelis, E. Kakaras, "Numerical investigation Greek lignite/cardoon co-firing in a tangentially fired furnace", *Applied Energy* 97 (2012) 514–524.
3. Boshu He, Meiqian Chen, Qiumei Yu, Shumin Liu, Lijuan Fan, "Numerical study of the optimum counter-flow mode of air jets in a large utility furnace" *Computers & Fluids* 33 (2004) 1201–1223.
4. Srdjan Belosevic, Miroslav Sijercic, Simeon Oka, Dragan Tucakovic, "Three-dimensional modeling of utility boiler pulverized coal tangentially fired furnace" *International Journal of Heat and Mass Transfer* 49 (2006) 3371–3378.
5. Yuegui Zhou, Tongmo Xu, Shien Hui, Mingchuan Zhang [2009], "Experimental and numerical study on the flow fields in upper furnace for large scale tangentially fired boilers" *Applied Thermal Engineering* 29 (2009) 732–739.
6. Choeng Ryul Choi, Chang Nyung Kim, "Numerical investigation on the flow, combustion and NOx emission characteristics in a 500 MWe tangentially fired pulverized-coal boiler" *fuel* 88 (2009) 1720-1731.
7. Cristiano V. da Silva, Maria Luiza S. Indrusiak, Arthur B. Beskow, "CFD Analysis of the Pulverized Coal Combustion Processes in a 160 MWe Tangentially-Fired-Boiler of a Thermal Power Plant." *Journal of the Braz. Society of Mechanical Science & Engineering* (2010) 427-436.
8. Aruna Devadiga, Prof. Dr. T. Nageswara Rao, "Optimizing Bunsen burner Performance Using CFD Analysis", *IJMER* (2013) 2773-2785.
9. Patankar SV. "Numerical heat transfer and fluid flow", New York: Hemisphere (1980).
10. Fiveland WA, Wessel RA. "Numerical model for predicting performance of three-dimensional pulverized-fuel fired furnaces". *J Eng Gas Turbines Power* (1988) 110, 117–129.
11. Boshu He, Meiqian Chen, Shumin Liu, Lijuan Fan, Jinyuan Xu, Wei-Ping Pan "Measured vorticity distributions in a model of tangentially fired furnace" *Experimental Thermal and Fluid Science* 29 (2005) 537–554.
12. Versteeg HK, Malalasekera W. "An introduction to computational fluid dynamics, the finite volume method" Essex: Longman Scientific & Technical (1995).
13. Ferziger JH, Peri_c M., "Computational methods for fluid dynamics", Berlin: Springer (1996).
14. Gomer K, Zinser W. "Prediction of three-dimensional flows in utility boiler furnace and comparison with experiments" *Combust Science Tech* (1988) 58, (43–57).
15. Anderson DA, Tannehill JC, Pletcher RH. "Computational fluid mechanics and heat transfer". Washington: Hemisphere (1997).
16. Tao WQ, "The modern progress in computational fluid dynamics". Beijing: Science press (2000).
17. A.H. Al-Abbas, J. Naser, "Effect of chemical reaction mechanisms and NOx modelling on air-fired and oxy-fuel combustion of lignite in a 100 kW furnace", *Energy & Fuels*, (2012).

18. Yuan JW, Xu MH, Han CY, Ding SF, Cao HD. "Numerical study on gas temperature deviation in a tangentially coal fired boiler of 600 MW unit" In Proceedings of the 3rd International Symposium on Combustion, September (1995), Beijing, China, 234–241.
19. A.H. Al-Abbas, J. Naser, "Effect of chemical reaction mechanisms and NO_x modelling on air-fired and oxy-fuel combustion of lignite in a 100 KW furnace", Energy & Fuels, (2012).
20. D.B. Anthony, J.B. Howard, H.C. Hottel, H.P. Meissner, "Rapid devolatilization of pulverized coal", Symposium (International) on Combustion, 15(1975) 1303-1317.
21. D.W.G. M.A. Field, B.B. Morgan and P.G.W. Hawksley, "Combustion of pulverized coal" Leatherhead: The British coal utilization research association, (1967), 186–210.
22. D. Dodds, J. Naser, J. Staples, C. Black, L. Marshall, V. Nightingale, "Experimental and numerical study of the pulverized-fuel distribution in the mill duct system of the Loy Yang B lignite fuel power station", Powder Technology, 207 (2011), 257-269.