

# Effect Of Fuel Temperatures on Performance and Emission Characteristics of HCCI Mode Diesel Engine Fueled with Diesel and B20 Biodiesel Diesel Blend

<sup>1</sup>Prof. Shyam Dabhi and <sup>2</sup>Anil Shah

<sup>1</sup>Assistant Professor, Mechanical Engineering Department, L.D. College of Engineering

<sup>2</sup>PG scholar, Mechanical Engineering, L.D. College of Engineering

## ARTICLE DETAILS

### Article History

Published Online: 05 July 2018

### Keywords

Preheating, flashing, HCCI, CI engine, flash boiling, jetropha biodiesel

## ABSTRACT

The density and viscosity of jetropha oil were reduced by heating it using induction coil heater. The lower injection pressure at elevated temperature helps in better spray characteristics which in turn improves combustion of fuel inside the combustion chamber. Experiments were conducted to evaluate combined effect of injection pressures and temperatures on performance and emission characteristics of diesel engine. Due to preheating the ignition delay was shorter and the higher rate of pressure rise was higher which led to slight increase in break power than diesel and crude jetropha oil the reduction in carbon dioxide, hydrocarbon, nitrous oxide emissions were observed for preheated fuel. Thus, injecting the fuel at suitable temperatures and pressures lead to reduction in exhaust emissions with slight or no effect on engine break power.

## INTRODUCTION

### Achieving HCCI through spray injection

The conventional methods for Homogenous Combustion in Compression Ignition engines were achieved through

- Variable Valve Timing
- External Gas Recirculation
- Early Injection

The variable valve timing can give homogenous mixture by changing the timing of inlet and exhaust valves. The duration of power stroke is increased and the duration of other strokes is reduced. This allows more time for the power stroke and thus allows more time to initiate atomization and fuel mixture preparation. Hence making the combustion process homogenous. Though VVT method can also lead to autoignition if it is not achieved properly.

As HCCI's autoignition event is highly sensitive to temperature, The simplest temperature control method can also be used to vary the inlet temperature by resistance heaters. The increased inlet temperature advances ignition in the combustion chamber and thus allows more time to mixture preparation. Hence makes the mixture homogenous. but this approach is too slow to change on a cycle-to-cycle frequency.

External Gas recirculation can be used to achieve HCCI as EGR recirculates a portion of an engine's exhaust gas back to the cylinders. This dilutes the O<sub>2</sub> in the incoming air stream and provides gases which are inert to combustion and act as absorbents of combustion heat to reduce peak in-cylinder temperatures. Because NO<sub>x</sub> forms when a mixture of nitrogen and oxygen is subjected to only high temperature, the lower combustion chamber temperatures are caused by EGR as it replaces some of excess oxygen and reduces the amount of NO<sub>x</sub> the combustion generates (though at some loss of engine efficiency). Gases re-introduced from EGR systems will also contain near equilibrium concentrations of NO<sub>x</sub> and CO.

The exhaust has dual effects on HCCI combustion. It dilutes the fresh charge, delaying ignition and reducing the chemical energy and engine output. Hot combustion products conversely increase gas temperature in the cylinder and advance ignition. Thus, depending upon temperature of recirculated gas the ignition can be advanced and HCCI can be achieved.

The main reason to achieve HCCI is to make homogenous mixture by allowing more time to prepare mixture or by external mixture formation. These techniques have some limitations as they can't control Auto ignition, low load operating range etc. As it produces low power range if achieved by VVT method. The early injection may also lead to higher pressure and higher temperature if not injected properly. The EGR system can also lead to reduced engine output as it delays.

But Injecting fuel directly in gaseous phase may reduce physical delay and allow more time to make chemical delay and gives more time to mixture preparation. So, to make a homogeneous mixture within a time limit it is required to inject fuel directly into cylinder in gas phase.

The fuel can be injected in the combustion chamber in the gas form by:

- Supercritical injection
- Flash-boiling

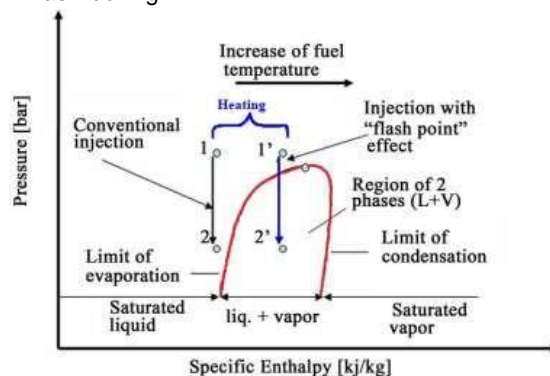


Figure 1. Flashing in P-H diagram.

From the above figure it can be seen that to achieve flashing of fuel into the combustion chamber of a compression ignition engine., it is needed to preheat the fuel up to the subcooled temperature of the fuel. After preheating the fuel, the fuel is then passes into injector nozzle where the further processes are followed.

To achieve desired pre- conditions of fuel the fuel is heated up to its subcooled temperature region and then the fuel is passes into the injector nozzle. As the subcooled liquid is expanded in the injector at large pressure drop, the metastable conditions can be achieved. A sudden drop in the pressure make the fuel to go in metastable state. And at this much low pressure the cavitation starts which is initiated by nucleation process. This nucleation process is then followed by bubble formation process. As the nuclei gets bigger it converted into the bubbles as the surrounding liquid takes up the latent heat from nuclei and starts converting its phase into gas form.

The gaseous injectant then mixes better with the gaseous air and makes the homogenous mixture. here the reduced physical delay gives more and more time to mixture preparation. Thus, by allowing the combustion process to last longer the homogenous mixture inside the combustion chamber, combustion temperature decrease, decrease in soot particles and emissions can be achieved. Also, the homogenous mixture combustion gives lesser tendency to knock.

Here it is to be noted that the perfect flashing of liquid fuel into the gaseous form directly into the combustion chamber of compression ignition engines can be achieved by modifying nozzle dimensions and changing the length of injector.

### Preheating

For Spray injection in compression Ignition engines, the temperature of the fuel needed to be raised up to certain point. The temperature of fuel is increased above its critical temperature in the supercritical injection and the temperature of fuel is needed to be raised up to its subcooled range.

So, in spray injection techniques the temperature of fuel before injecting the fuel into combustion chamber is raised. This increase in temperature is achieved by preheating the fuel up to required point of different spray injection methods.

A typical image of preheating setup of Peter Joppig and his team is shown here to explain positions for heating apparatus on the intake manifold of an engine [2].

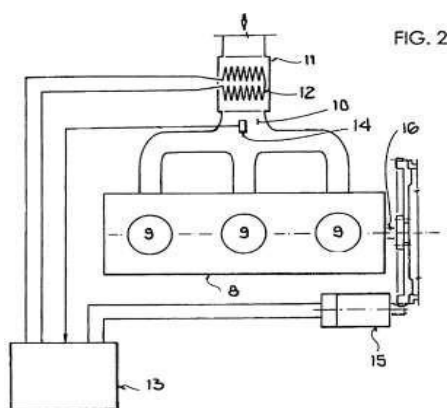


Figure 2. Preheating Set up [2]

During the preglow phase 1, 2, 3 between switching on the ignition and activation of the starter, the current supplied to the heating elements in the heating flange is variably controlled. During a first-time period 1, the heating element is initially supplied with full current until the heating flange reaches a reference temperature. After the reference temperature has been reached, a post-heating phase 2 and a start readiness phase 3 begin in which the heating power is controlled in such a way that the heating flange is kept at a constant temperature. The cold start/preheat method according to the invention can be used on an internal combustion engine of this type. An internal combustion engine, in particular a diesel engine 8 having, for example, three combustion cylinders 9, takes in its air by means of an intake pipe 10. A heating flange 11 having heating elements 12 which project into the intake pipe 10 is arranged in the intake pipe 10. The power control and the supply of current to the heating elements is undertaken by a control unit, in particular an engine control unit, 13. In order to regulate the temperature level of the intake charge air, the control unit 13 receives input from a temperature sensor 14 which measures the air temperature in the intake pipe downstream of the heating elements but before entry into the combustion cylinders. The starting process is initiated by the control unit 13 by activating a starter 15. The pinion of the starter 15 engages here in a gear Wheel in a non-positive manner and in a manner known per se. The gear Wheel is in turn connected in a non-positive manner to the crankshaft 16 of the internal combustion engine and turns the crankshaft When the starter is activated. The cold start method according to the invention can advantageously be used on an internal combustion engine of this type.

### RESEARCH GAP

Preheating of biodiesel blends leads to smoother operation and lesser emissions.[1]-[13] have worked on different types of biodiesels and presented the effects on performance and emission characteristics of the Bio fuel on CI engine. Particularly P. Pradhan et. Al worked on effect of preheating of jetropha oil on performance and emission characteristics.

So, A Preheated fuel is injected at lower injection pressure than normal injection pressure, it leads to fine spray of injectant fuel and ultimately it vaporises the fuel easily. Which leads to homogenous combustion and thus leads to much lower emissions at slightly changed break power and efficiency at all loads.

The research in flash-boiling area is focused on petrol and its comp like octane, pentane only and in GDI mode. Further there is even less research on flashing on compression ignition engine. The flash-boiling of biodiesel-diesel blends can eliminate the problem of atomization of vegetable oils. Also, the existing HCCI system employed by different methods have different problems like autoignition, low power range, reduced engine output etc. So, the present work is focused on finding newer method for achieving HCCI in conventional CI engines.

### EXPERIMENTAL SETUP AND METHODOLOGY

Single cylinder variable compression ratio (VCR) engine is used for evaluating effect of variation of temperatures and of pressures of biodiesel diesel blends on engine performance

and emission as shown in figure 3. Engine specification is shown in table 1. Compression ratio is fixed at 16:1. Engine performance and emission characteristic were measured at

various injection pressure, injected fuel temperature and biodiesel blends.



Figure 3: Testing setup

1. Single cylinder four stroke diesel engine
2. Eddy current dynamometer
3. Rotameter
4. Air box
5. Fuel tank
6. Burette
7. Fuel control valve
8. Load cell
9. Pressure sensor
10. Performance testing m/c
11. Exhaust gas analyzer
12. Exhaust probe

Table 1: Technical Specifications of the Test Engine:

Make	Kirloskar
Model	AV1
Engine Type	Variable Compression ratio engine
Fuel	Diesel/Petrol
Cooling	Water Cooled
Power	2.5 kW @ 1500 RPM
Stroke	110mm
Bore	80mm
Stroke Volume	553 cc
Compression Ratio	9.51: 1 to 16:1

**Eddy Current Dynamometer:**

These machines make use of the principle of electro-magnetic induction to develop torque and dissipate power. A toothed rotor of high permeability steel rotates with a fine clearance between water cooled steel loss plates. Two annular coils generate a magnetic field parallel to the machine axis and motion of the rotor give rise to changes in the distribution of magnetic flux in the loss plates. This in turn gives rise to circulating eddy currents and

the dissipation of power in the form of electrical resistive losses. Energy is transferred in the form of heat to cooling water circulating through passages in the loss plates, while some cooling is achieved by the radial flow of air in the gaps between rotor and plates. Varying the current supplied to the annular exciting coils controls power, and very rapid load changes are possible.



Figure 5: Eddy Current Dynamometer

**Engine emission measurement**

In order to measure exhaust constituents from the engine AVL exhaust gas analyzer is used. Apart from measuring exhaust

emissions this analyzer also measures engine RPM as well as lubricating oil temperature and equivalence ratio.

**Table 2: AVL Exhaust gas analyzer specifications**

Measuring gas	Measuring method	Measuring range
CO	NDIR	0-15 %
HC	NDIR	0-15000 ppm
NOX	Electrochemical	0-5000 ppm
CO2	NDIR	0-20%
O2	Electrochemical	0-25%



Figure 6: AVL Exhaust gas analyzer

**RESULTS AND DISCUSSION**

Table 2 and 3 indicated performance and table 4 to 7 indicates emission characteristics of VCR engine at compression ratio 16:1 with various bio-diesel blends, fuel temperature and injection pressure. Comparison of diesel with bland B20 is

done. Fuel temperature at the time of injection is taken at 25°C, 160°C, 180°C and 200°C and brake-in pressure of injector us set at 150 bar. O<sub>2</sub>, HC, CO, NO<sub>x</sub> and CO<sub>2</sub> were measures by exhaust gas analyzer.

**Table 2: Break power at various injection pressures and temperatures**

Load (%)	Brake Power (kW)				
	Diesel at 25°C and 150 bar	B20 bland (%v/v) 25°C and 150 bar	B20 Bland (%v/v) 160°C and 150 bar	B20 Bland (%v/v) 180°C and 150 bar	B20 Bland (%v/v) 200°C and 150 bar
0	0.19	0.198	0.218	0.183	0.204
30	0.709	0.645	0.69	0.659	0.643
60	1.425	1.421	1.304	1.349	1.379
100	2.466	2.099	2.119	2.127	2.122

**Table 3: BSFC at various injection pressures and temperatures**

Load (%)	Brake specific fuel consumption (BSFC), (g/kWsec)				
	Diesel at 25°C and 150 bar	B20 bland (%v/v) 25°C and 150 bar	B20 Bland (%v/v) 160°C and 150 bar	B20 Bland (%v/v) 180°C and 150 bar	B20 Bland (%v/v) 200°C and 150 bar
0	0.581717452	0.647923175	0.653086612	0.882411067	1.23078609
30	0.209693324	0.26808368	0.293347302	0.394120123	0.880272465
60	0.157192982	0.240974224	0.257668712	0.259451446	0.733820282
100	0.144950044	0.181046188	0.188768287	0.213471582	0.670086531

**Table 4: HC emission at various injection pressures and temperatures**

Load (%)	HC emission (ppm)				
	Diesel at 25°C and 150 bar	B20 bland (%v/v) 25°C and 150 bar	B20 Bland (%v/v) 160°C and 150 bar	B20 Bland (%v/v) 180°C and 150 bar	B20 Bland (%v/v) 200°C and 150 bar
0	60	54	48	56	91
30	77	60	56	68	96
60	83	65	62	78	101
100	89	86	81	84	104

**Table 5: NOx emission at various injection pressures and temperatures**

Load (%)	NOx emission (ppm)				
	Diesel at 25°C and 150 bar	B20 bland (%v/v) 25°C and 150 bar	B20 Bland (%v/v) 160°C and 150 bar	B20 Bland (%v/v) 180°C and 150 bar	B20 Bland (%v/v) 200°C and 150 bar
0	54	71	48	78	183
30	122	145	133	163	197
60	284	390	388	425	435
100	423	439	454	443	468

**Table 6: CO emission at various injection pressures and temperatures**

Load (%)	CO emission (%v/v)				
	Diesel at 25°C and 150 bar	B20 bland (%v/v) 25°C and 150 bar	B20 Bland (%v/v) 160°C and 150 bar	B20 Bland (%v/v) 180°C and 150 bar	B20 Bland (%v/v) 200°C and 150 bar
0	0.12	0.09	0.08	0.11	0.09
30	0.13	0.09	0.07	0.12	0.11
60	0.09	0.08	0.05	0.1	0.1
100	0.05	0.06	0.03	0.09	0.09

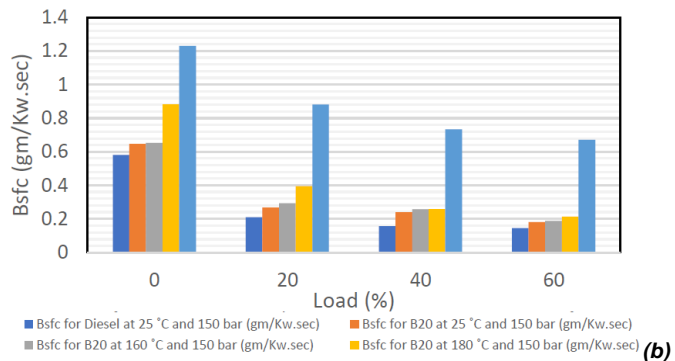
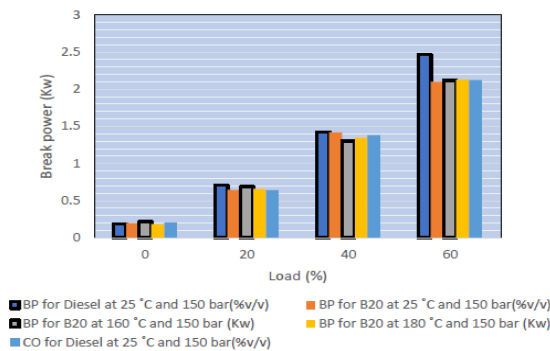
**Table 7: CO<sub>2</sub> emission at various injection pressures and temperatures**

Load (%)	CO <sub>2</sub> emission (%v/v)				
	Diesel at 25°C and 150 bar	B20 bland (%v/v) 25°C and 150 bar	B20 Bland (%v/v) 160°C and 150 bar	B20 Bland (%v/v) 180°C and 150 bar	B20 Bland (%v/v) 200°C and 150 bar
0	2.61	2.56	2.51	2.82	2.53
30	3.51	3.57	3.43	3.8	3.39
60	5.22	5.34	5.4	5.36	5.12
100	6.95	7.52	5.75	5.1	5.78

**Effect of Injection pressure and fuel temperature on engine performance**

As shown in fig 7(a) brake power increases with increase in load for both diesel and B20. Brake power is slightly decreases for B20 fuel compared to diesel fuel for same load. Due to preheating the break power further increases as the rate of pressure rise for B20 is much before than expected This

reduces ignition delay and leads to start combustion much earlier. As shown in fig 7(b) BSFC decreases with increase in load for both diesel and B20 fuel. BSFC is higher for B20 fuel compared to diesel fuel for same load. The bsfc for B20 was increased due to more amount of fuel needed to burn to get same heat and break power as that of diesel fuel



(a) Variation in BP with Load

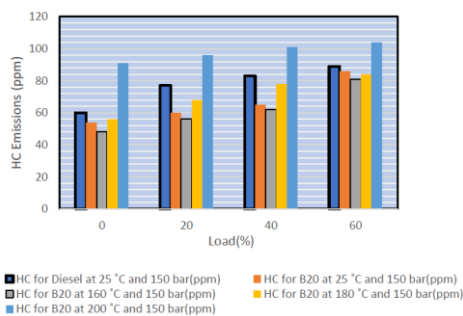
Variation in BSFC with Load

Figure 7: Effect on engine performance

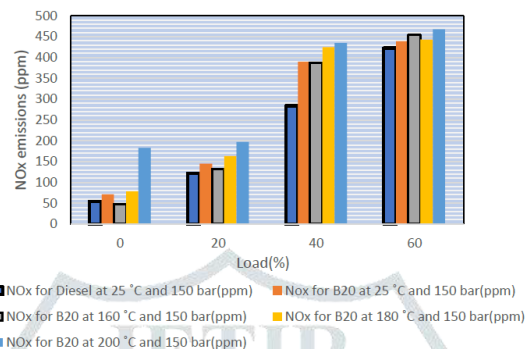
**Effect of Injection pressure and fuel temperature on emission characteristics**

As shown in fig. 8(a) HC emission is increases with load in both diesel and B20 fuel. HC emission is lower for B20 compared to diesel for all load percentage. With preheating the BSFC further increases due to reduced density and increased fuel consumption in each spray. As shown in fig 8(b) NO<sub>x</sub> emission is increases with load in both diesel and B20 fuel. NO<sub>x</sub>

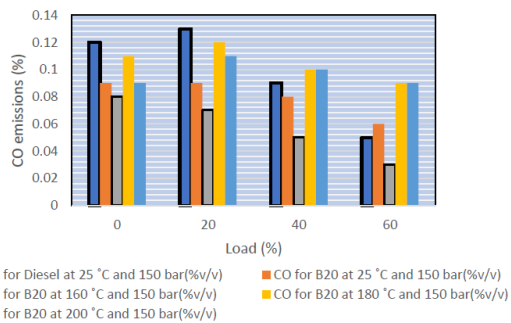
emission is higher for B20 compared to diesel for all load percentage. The preheating of B20 lead to higher combustion temperature and the formation of NO took place due to higher temperature and availability of oxygen. As shown in fig. 8(c) CO emission is decreases with load in both diesel and B20 fuel. CO emission is lower for B20 compared to diesel for all load percentage.



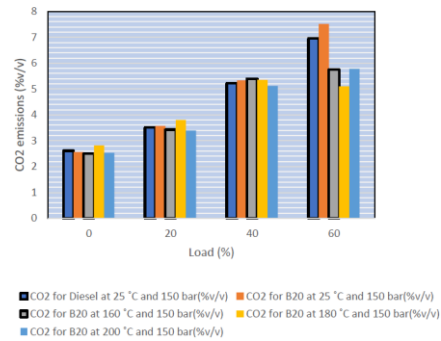
(a) Variation in HC with Load



(b) Variation in NOx with Load



(c) Variation in CO with Load



(d) Variation in CO2 with Load

Figure 8: Effect on emission characteristics

## CONCLUSION

Due to preheating the peak rate of pressure rise ROPR occurred max before TDC at full load and no load due to lower ignition delay and earlier start of combustion than Diesel and B20 at normal conditions

With increased temperatures the fuel consumption per unit break power increases for all temperatures for B20.as heating

of B20 leads to reduced density, so again more amount of fuel is injected into combustion chamber. Overall effect of heating of B20 fuel lead to rapid increase in fuel consumption

An increase in exhaust gas was observed due to burning of increased higher amount of fuel injected to meet extra power requirement this led to increase in NOx emissions at increased temperatures.

## References

- [1] N. Ashgriz, *Handbook of Atomization and Sprays*, ISBN 978-1. Springer, 2011.
- [2] P. Joppig and K. De, "( 12 ) United States Patent Joppig et a ].," vol. 2, no. 12, 2008.
- [3] S. Bari, T. H. Lim, and C. W. Yu, "Effects of preheating of crude palm oil (CPO) on injection system, performance and emission of a diesel engine," *Renew. Energy*, vol. 27, no. 3, pp. 339–351, 2002.
- [4] M. Karabektas, G. Ergen, and M. Hosoz, "The effects of preheated cottonseed oil methyl ester on the performance and exhaust emissions of a diesel engine," *Appl. Therm. Eng.*, vol. 28, no. 17–18, pp. 2136–2143, 2008.
- [5] M. Canakci, A. N. Ozsezen, and A. Turkcan, "Combustion analysis of preheated crude sunflower oil in an IDI diesel engine," *Biomass and Bioenergy*, vol. 33, no. 5, pp. 760–767, 2009.
- [6] H. Hazar and H. Aydin, "Performance and emission evaluation of a CI engine fueled with preheated raw rapeseed oil (RRO)-diesel blends," *Appl. Energy*, vol. 87, no. 3, pp. 786–790, 2010.
- [7] B. Santhosh, R. Suresh, and K. V Yathish, "Experimental Investigations on the Use of Mahua Oil Methyl Ester Produced Using Magnesium Phosphate Catalyst as Fuel in a Compression Ignition Engine ," vol. 2, no. 12, pp. 3837–3846, 2013.
- [8] P. R. Wander, C. R. Altafini, A. L. Moresco, A. L. Colombo, and D. Lusa, "Performance analysis of a mono-cylinder diesel engine using soy straight vegetable oil as fuel with varying temperature and injection angle," *Biomass and Bioenergy*, vol. 35, no. 9, pp. 3995–4000, 2011.
- [9] N. Yilmaz and B. Morton, "Effects of preheating vegetable oils on performance and emission characteristics of two diesel engines," *Biomass and Bioenergy*, vol. 35, no. 5, pp. 2028–2033, 2011.
- [10] N. Yilmaz, "Effects of intake air preheat and fuel blend ratio on a diesel engine operating on biodiesel-methanol blends," *Fuel*, vol. 94, pp. 444–447, 2012.
- [11] K. S. Rao, "Characteristics of a DI-CI Engine Fueled with Preheated Corn Biodiesel," vol. 40, no. 10, pp. 350–357, 2012.
- [12] P. Pradhan, H. Raheman, and D. Padhee, "Combustion and performance of a diesel engine with preheated Jatropha curcas oil using waste heat from exhaust gas," *Fuel*, vol. 115, pp. 527–533, 2014.
- [13] P. G. Aleiferis and Z. R. Van Romunde, "An analysis of spray development with iso-octane, n-pentane, gasoline, ethanol and n-butanol from a multi-hole injector under hot fuel conditions," *Fuel*, vol. 105, pp. 143–168, 2013.
- [14] H. Guo *et al.*, "Effect of flash boiling on microscopic and macroscopic spray characteristics in optical GDI engine," *Fuel*, vol. 190, pp. 79–89, 2017.
- [15] Y. Chen and Z. Zhang, "Mechanism of flash boiling and spray analysis with gasoline, iso-octane, n-pentane and ethanol from a novel heated tip GDI injector," *Appl. Therm. Eng.*, vol. 115, pp. 1109–1117, 2017.
- [16] H. Guo *et al.*, "Comparison of spray collapses at elevated ambient pressure and flash boiling conditions using multi-hole gasoline direct injector," *Fuel*, vol. 199, pp. 125–134, 2017.