

# Demographic characteristics of Koraiyar Watershed, Coimbatore District, Tamil Nadu

<sup>1</sup>Masilamani P.; <sup>2</sup>Abdul Rahaman S. & <sup>3</sup>Aruchamy S.

<sup>1</sup>Assistant Professor, Department of Geography, Bharathidasan University, Tiruchirappalli (India)

<sup>2</sup>Guest Lecture, Department of Geography, Bharathidasan University, Tiruchirappalli (India)

<sup>3</sup>Professor (Rtd), Department of Geography, Bharathidasan University, Tiruchirappalli (India)

## ARTICLE DETAILS

### Article History

Published Online: 05 July 2018

### Keywords

Demography, Koraiyar watershed, Literacy, Occupation

### Corresponding Author

Email: masilamani.ap[at]gmail.com

## ABSTRACT

Demographic characteristics of an area are important for planning and implementation of state policies. Population of the Koraiyar watershed is 4, 22,835 of which the male population accounts for (210635) 49.81 per cent and the female population is (212200) 50.19 per cent. Compared to male population the female population is slightly high. The population is high in the villages adjacent to the towns. Among the working class people about 32.4 per cent (62, 535) is primary workers, secondary 3.3 per cent (6349) and tertiary 64.3 per cent (1, 24, 193 persons). Rapid population has meant a decline in agricultural land and switch over to industrial, residential and commercial uses. The study area, Koraiyar watershed has noticed these phenomena and an attempt has been made in this paper to study the demographic characteristics of the watershed.

## 1. Introduction

The word demography was originated from Greek word in which 'demos' refers to people and 'graphein' to description. The term demography was first coined by Achill Guillard, in 1855. The United Nation multilingual dictionary (1958) defines demography as the "scientific study of human population, primarily with respect to their structure, size and their development. Demographic data are important for the planning and implementation of state policies, especially those for economic development and general public welfare. In developing countries, rapid population growth has meant a decline in agricultural land and switch over to industrial, residential, commercial uses. There are various elements studied in demography like migration, birth rate and death rate. This paper deals with population growth, sex ratio, population density, occupational structure and literacy. The major source of this research paper are based on Census Report published 2011, District Statistical Magazine and authors survey. The demographic structure such as age structure, marital status, educational attainment, occupational structure, death rate, birth rate TFR and migration are analysed.

## 2. Study Area

The Koraiyar watershed is in the mid-portion of the Coimbatore District. It is located between 10° 36'N and 10° 57'N and 76° 48' E and 77° 09' E with an area of about 660 sq.km. It lies in the south western part of Coimbatore near Chettipalayam at the elevation of 420 meter above Mean Sea Level. It covers four taluks and five blocks. The climate is hot and humid. The Koraiyar watershed Coimbatore District consists of 93 revenue villages (Fig 1) comprising 36, 35, 8, 8 and 6 villages of Pollachi North Block, Kinathukadavu Block, Madukkarai Block, Pollachi South Block and Sulthanpettai Block respectively in Coimbatore District. Pollachi North and Pollachi South Blocks fall under Pollachi Taluk. Madukkarai Block belongs to Coimbatore south Taluk. Sulthanpettai Block comes under Sulur Taluk. Kinathukadavu is a separate Block and also function as a taluk.

The Block headquarters of Madukkarai and Sulthanpettai are located outside of the study area. There are five urban centers in the watershed. Pollachi is a class I town and Kinathukadavu is class II town and Malumachempatti, Othakalmandapam and Chettipalayam are the class IV towns. The total population of the watershed is 4, 22,835 persons.

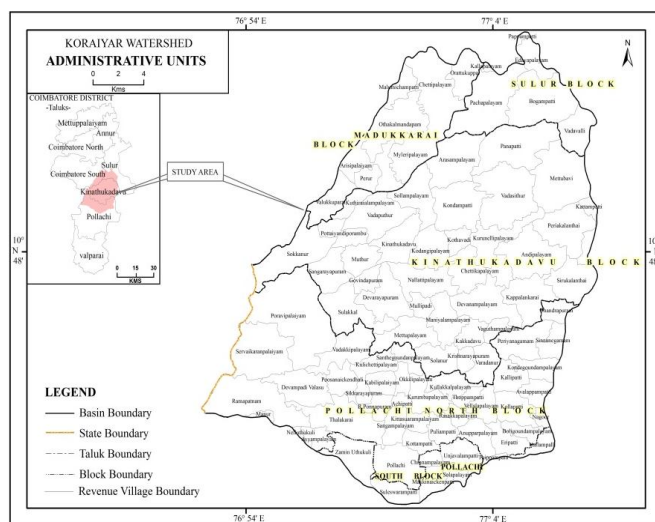


Figure 1

## 3. Objective

- The main objective of the study area is to identify the demographic characteristics.
- Such as population distribution, population density, literacy, sex ratio and occupational structure of Koraiyar Watershed.

## 4. Data Base and Methodology

The base map of the study area has been prepared by uploading the Survey of India topographic maps of 58B/13 & 14 and 58F/1&2) into ArcGIS environment. All the physical and cultural details have been digitized and edited. This map is the

base for the preparation of all thematic maps and overlaying analysis to cull out the inferences.

The secondary base line data were processed, compiled, computed and mapped in the form of thematic layers for analysis and to understand the existing condition of Koraiyar watershed. The secondary details relating cultural phenomena like, population, occupational structure, and administrative aspects and so on were collected.

**5. Result and Discussion**

**5.1. Distribution of Population**

Distribution of population refers to the way people are spaced over the surface of the earth. In other words, it emphasises the pattern of actual place-location of a population

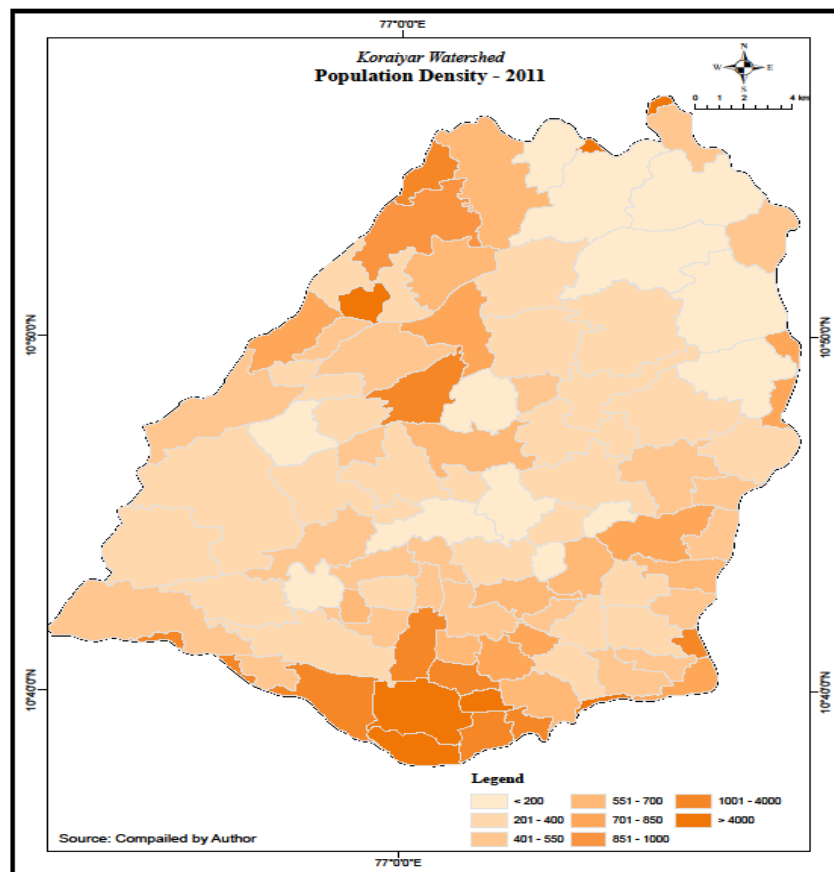
Industrialisation and urbanisation are visible reflections of increase in population growth and population density and literacy level as point out by N. K. Bahekar, Yeshwant and Maskare (2012). In order to study the population growth three variables such as population density, absolute increase of population and relative increase of population are selected.

The distribution of population is depicted as in 2011 and it reveals a very uneven pattern. Areas along the rivers Varattar,

Koraiyar have the highest concentration of population. The highest concentration of population in this region could be attributed for the better irrigation facilities, fertile soil and other better natural conditions suitable for growing food and cash crops. There are few urban centres in the watershed, namely Pollachi, Pappampatti, Thipampatti, Chinnampalayam and Suleswarampatti altogether covers 35 per cent of total population.

**5.2. Density of Population**

Density of population refers to the number of persons per square kilometre. This is calculated by dividing the number of persons of a country or region by the total land area. The population of the watershed is highly related to the physical, economic and social conditions. According to the 2011 Census, the total population of the watershed is 4, 22,835 and the density is 641 (2011) per sq. km. It is high when compared with density of the state average of 555 persons per s.q km. The Figure 2 shows the density of population of the villages. Most of the Koraiyar watershed villages are under low density of population. The concentration of high density of population is associated with urban areas like Pollachi (9008), Thippampatti near Pollachi (6643) and Malummachampatti (3377). The lowest density is observed in Posanaickenghali (84), Sangarayapuram (114) and Mettubavi (151).



**Figure 2.**

**5.3. Literacy**

A literate person is one who is able both to read and write. Literacy is an index of human development and quality of human life. Poor literacy hinders economic development and in case of females even retards the progress of family planning

programme. (Tiwari, 2006). About 71 per cent (304995) of the total population of the watershed were literate during 2011. In the study area, more than 72 per cent of literates belong to Pollachi, Suleswarampatti, Makkinampatti, Chinampalayam, Sangampalayam, R.Ponnapuram, Kinathukadavu, Malumachampatti and Kallapalayam. Out of 93 villages only 3

villages comes under below 50% of literacy rate namely Krishnarayapuram in Kinathukadavu block, Kottampatti in Pollachi north block and Servaikampalayam in Pollachi north block Fig 3. For higher education, the Koraiyar watershed is highly depended on the colleges located at Pollachi, Coimbatore and Kinathukadavu. Some colleges started recently located inside the watershed Eswar Engineering College. In general out of 93 villages, 83 villages have the literates of more than 60 per cent.

**5.4. Sex Ratio**

Sex ratio signifies the number of females per thousand males. Sex ratio may vary among different regions. It is an important indicator to measure the extent of prevailing equality between male and female in the society at a given point of time. As per the Census 2011, the study area had the sex ratio of 993 females per 1000 males. It is more than the sex ratio of the state average of 995. Out of 93 villages in 63 village sex ratio is high which ranges between 1000-1115 (Fig.4). In rest of 30 villages the sex ratio is notably low, eg Orattukuppai (899) Panapatti (905) and Poosanaickendhalai (918).

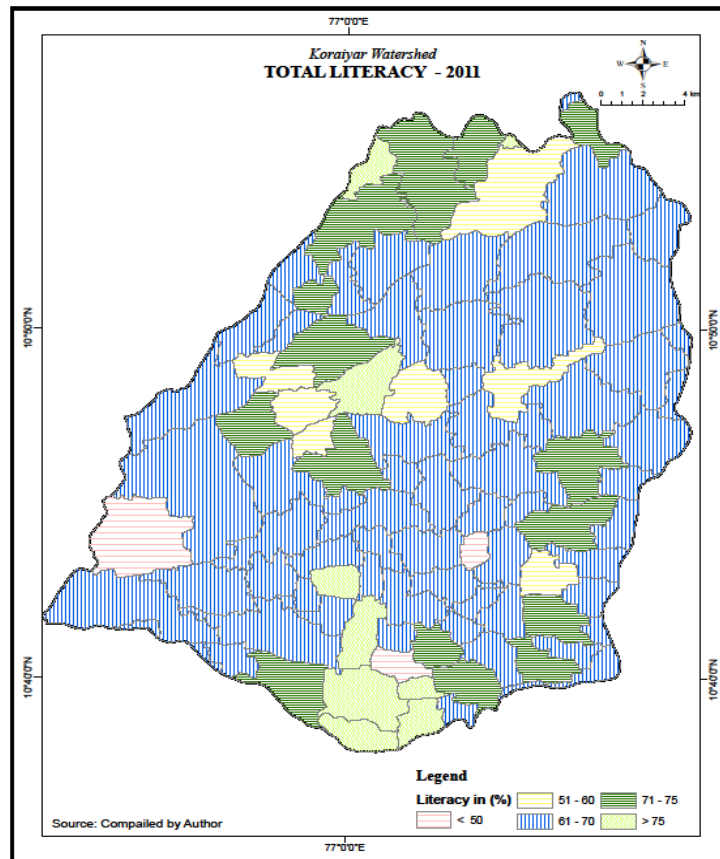


Figure 3

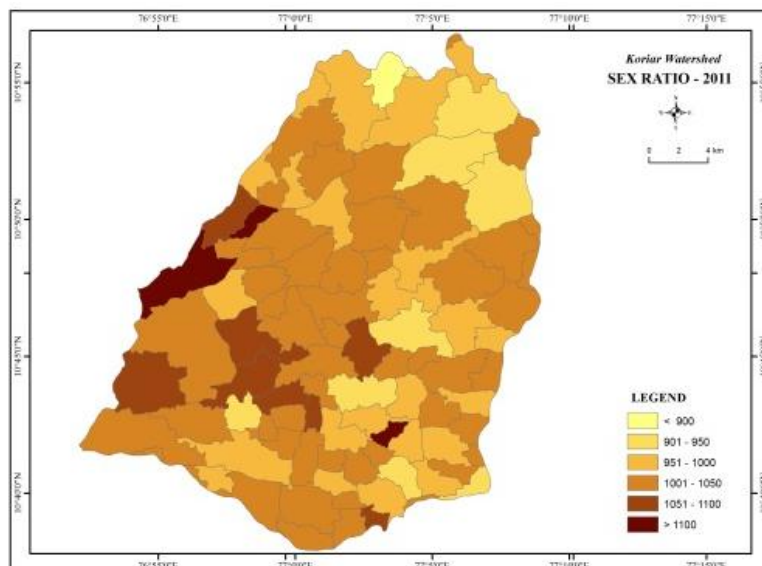


Figure 4

**5.5 Occupational Structure**

Occupation implies trade or profession. It reveals the nature of economic progress of a country. It is related to agriculture, industry and services. Occupations depend upon the degree of economic development and sophistication of a country. The study area has the population of 4, 22, 835 persons of which 45.7 per cent of the population (1, 93, 077) persons comes under working class of various categories involved in primary, secondary and tertiary activities. The rest of 54.3 per cent people belong to non-workers.

All workers, who are not cultivators or agricultural labourers or not engaged in house hold industry are treated as other workers. This category covers factory and plantation workers, government workers, professional services, workers engaged in livestock, forestry, mining and quarrying, construction, trade and

commerce, transport and storage etc.( Bhardwaj S.M. and Harvey M.E., 1975).

Among the working class people, about 32.4 per cent (62, 535) is primary workers, secondary 3.3 per cent (6349) and tertiary 64.3 per cent (1, 24, 193 persons) (Fig 5). It should be noted that before eighties, most of Indian villages had less than 20 per cent under primary working class. Owing to the scientific and technological development and arrival of modern agricultural gadgets made the agriculture operations easy which reduced the primary workers. Therefore, the people under tertiary activities which include the service sector such as government workers, teachers, factory workers, commerce, business, banking, political and social workers have been increased. It indicates the striking increase in the study area.

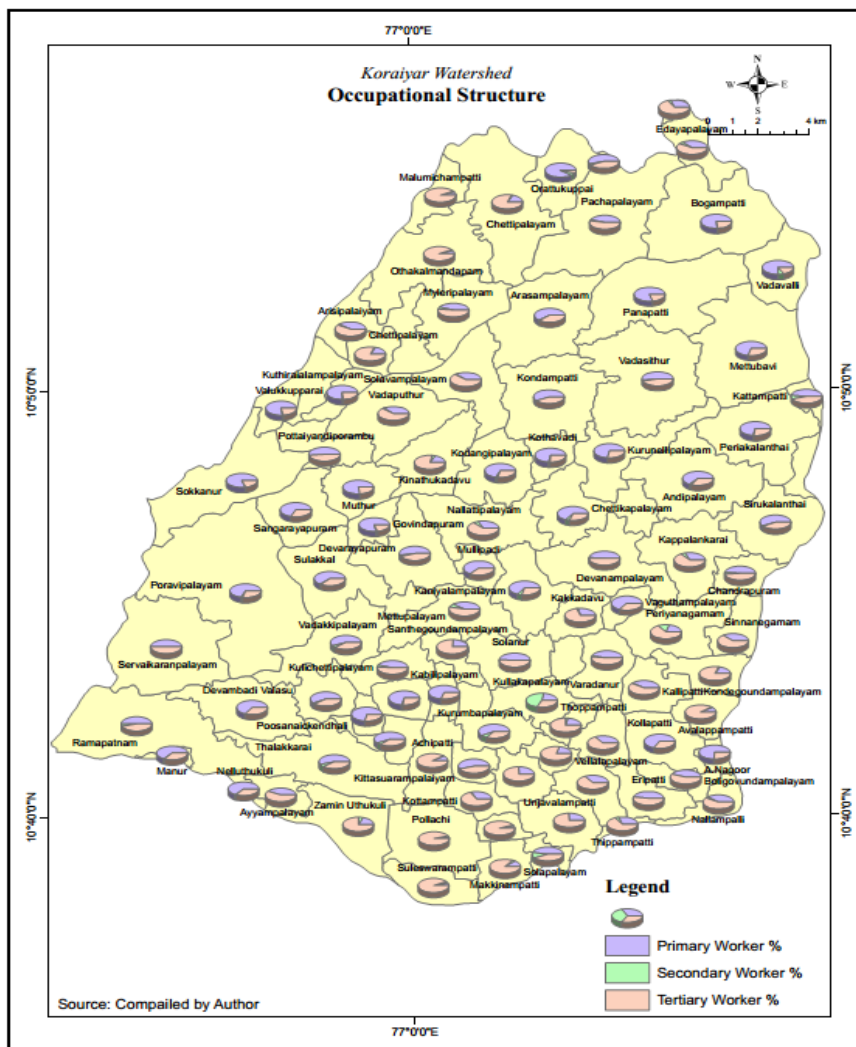


Figure 5

The map of occupational structure is self-explanatory which is showing the spatial distribution in the regional scenario. The primary workers are more in Kinathukadavu block and Pollachi north block apart from Panappatti and Poravipalayam villages and notably in south western part of the study area whereas south-eastern and mid-portion from north-south are predominated by tertiary workers. The secondary workers are

very less in the study area as it is only 3.3 per cent (6349 persons).

**6. Conclusion**

The present study has been brought out the characteristics of demographic occupational characteristics of the Koraiyar

watershed, Coimbatore District. The quantitative and statistical interpretation has helped to understand the useful components of population distribution, population density, literacy, sex-ratio and occupational structure. The tabular data and different population and occupation related figures are useful input to the

society for future planning strategies for Koraiyar watershed in near future as well.

#### **Acknowledgement**

Acknowledge the supporters and people involved in research process

#### **References**

1. Bhardwaj, S.M.and Harvey, M.E.,(1975) "Occupational Structure of Scheduled Castes and General Population of Punjab", NGJI. XXJ, p.63.
2. Bahekar, Yeshwant and Maskare (2012): Population Growth Types in Gondia District of Maharashtra State (2001-2011) The Goa Geographer, IX (1), December, 2012, pp 67-70.
3. Ghosh, B.N. (1985). Fundamentals of Population Geography, Sterling Publishers Private Limited, New Delhi.
4. Kumkum Roy, Shiva Nand Yadav, (2008). A Study of Demographic Structure of Bijnor District in Uttar Pradesh, The Deccan Geographers, 46, (1), June, 2008, pp 1-17.
5. Mishra, G.P.,(1981). Dynamics of Rural Development in Village India, Ashish Publishing House, New Delhi, pp 11-27.
6. Tiwari R.C., (2006). Geography of India, Prayag Pustak Pustak Bhawan, Allahabad, p.769.