

# Women Participation through Local-Self Government: A Comparative Study between Pandua and Bairgachhi-I Gram Panchayat, District of Malda, West Bengal

\*<sup>1</sup>Siddhartha Sankar Manna & <sup>2</sup>Gita Rajbanshi

<sup>1</sup>Assistant Professor, Department of Political Science, University of Gour Banga, Malda, (India)  
<sup>2</sup>M.Phil Research Scholar, Department of Political Science, University of Gour Banga, Malda, (India)

---

## ARTICLE DETAILS

---

### Article History

Published Online: 17 January 2018

---

### Keywords

Political participation, Social Science, economic status, democracy, government

---

### \*Corresponding Author

Email: manna.siddhartha@yahoo.in

---

## ABSTRACT

---

*Political participation has been defined in various terms in social sciences. It has been said that political participation refers to those activities, by which members of a society take part in the selection of rulers and directly or indirectly in the formation of public policy and activities. These activities typically include voting, seeking information, discussing and proselytizing, and attending meeting, contributing financially to party fund and communicating with representatives.*

*This paper is basically descriptive-analytical and empirical in nature. The present study is intended to identify the impact of Women Participation and Social development in Local Self-Government: A Comparative Study between Pandua and Bairgachhi-I Gram Panchayat in Gazole Block district of Malda district. For the purpose of identifying the same, the primary and secondary data are used. The data used in it is purely from primary and secondary sources according to the need of this study. The objectives of this comparative analysis of the two Gram Panchayat reports prepared on the basis of status of women in local government in Pandua Gram Panchayat and Bairgachhi-I Gram.*

*In this paper it is explored the developmental process in Pandua and the Bairgachhi-I Gram Panchayat. The government took a number of initiatives and 'best practices' for improving social conditions and social opportunities. It can develop the women participation. One of the key elements of Gram Panchayat is women's representation in policy-making forums, local authorities and civic organizations in society. Unless women are involved in the decision and Policy-making process of local level changes in women's political and to some extent social and economic status, will continue to be marginal.*

---

## INTRODUCTION

Political participation has been considered as a process in different ways in social sciences. Political participation is the voluntary activities by which individual of society participate in the selection of ruler and directly or indirectly participate in public decision making process. It includes the different forms of activities like voting, seeking information, discussing and attending the meeting, communicating with the representatives for the solution of problems. The more "active" forms of participation include, formal enrolment in a party, canvassing and registering voters, speech writing and speech making, working in campaign and competing for a public or a party office (Sills, vol. 2, p. 252.).

Women participation in democracy is important tool for mobilizing the right of human beings in family as well as society. The issue of political participation of women has been increasing the interest of election, governmental decisions, policy making and social welfare of democratic system in our country. In my paper I want to explore the mode of participation in Pandua and the Bairgachhi-I Gram Panchayat. The government took a number of initiatives and 'best practices' for improving social conditions and social opportunities. It can develop the women participation. One of the key elements of Gram Panchayat is women's representation in policy-making forums, local authorities and civic

organizations in society. Unless women are involved in the decision and Policy-making process of local level changes in women's political and to some extent social and economic status will be marginalized.

Political participation determines the progress of political life and social realities. It is important to state that the participation is necessary for the development and as a tool of progress. The democracy requires the political participation and individual's political activity as a virtue of rights which can mobilize the social life. Participation can be analyzed as civil rights which are called as the social opportunities. Usually political participation implies those actions of citizens, by which they seek to influence or to support government and politics. Verba and Nie rightly identified that political participation as 'those activities by private citizens that are more or less directly aimed at influencing the selection of governmental personnel and or the actions they take' (Verba and Nie, 1972, p. 2.). The political participation is a process of resolving the confliction and contradictions of society which can mobilize the social life of individual.

Women are the half of the population society. They are not outside of the particular class. They have born in all classes and all sections of society. They made half of human capital in society. So what is the "women's question" is not the question of any particular section of society and political organization. It is an integral part of the entire social phenomenon. Human

society cannot move forward without stirring the half of its body, the women who take the responsibility of society. Thus, it is considered as the social and national interest to draw women folk into the social and political process (Mukherjee, 1989, p. 99.).

In these circumstances it is necessary to explore the role of women in political decision making process of society. It has been concentrated on the comparative study on two gram panchayat of Pandua and Bairgachhi-I. At the grass root level on women have, in particular, advocated the need to increase the number of women in decision-making positions, not only to ensure that women’s interests are represented but also because of growing evidence that women’s involvement improves the way in which leadership and decision-making is practiced. Within the Pandua and Bairgachhi-I Gram Panchayat the initiatives to encourage women’s political participation have, up until now, focused mainly on women’s leadership and social development at Gram Panchayat level. However, women have always been an integral part of their communities and they take a very active role in village life and community organizations. Local government is much closer to this level of participation and is a first step into a political decision making arena.

Information in these two Gram Panchayat reports incorporates demographic data on women’s participation, including education levels, share of income, fertility rates and mortality statistics. These reports also include descriptions of the women participation in politics and development structures in each Gram Panchayat; statistics on women’s participation in politics; statutory requirements that provide women with political and civil rights; and the special measures taken to participate in local government of women's and other activities by political parties and others that supports women’s involvement.

**STUDY OF AREA**

Present survey area is confined two Gram Panchayat between the 22 booth of the Pandua Gram Panchayat and 10

booth of the Bairgachhi-I Gram Panchayat area of the Malda district in West Bengal, a state in India, for collecting data about the women respondents. General women respondents were brought under the purview of the study. For acquiring information from the women members of Gram Panchayat and present and past women politicians who are representing the people as members of Gram Panchayat have been interviewed.

Historically, Pandua is a ruined city in Malda district, West Bengal in India. Pandua is now almost synonymously known as Adina, a small town located about 18 km North of Malda Town. Jami Mosque or the Adina Mosque is the most important celebrated monument of Pandua. James Fergusson described it as the finest example of Pathan architectural existence. But some scholars believe that it has been a conversion of a temple. Other important monuments of this city are the Eklakhi mausoleum and the Qutb Shahi Mosque. The ruins of Adina Mosque are located in Pandua of Malda district, West Bengal, India. It is located close to the Bangladesh-India border and twenty kilometers north of the town of English Bazar along a major highway to North Bengal. Bairgachhi-I Gram Panchayat is a little Panchayat of the Gazole block district of Malda.

**SURVEY DATA ANALYSIS OF THE STUDY**

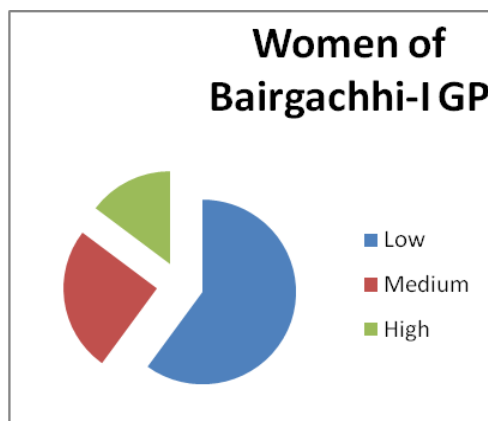
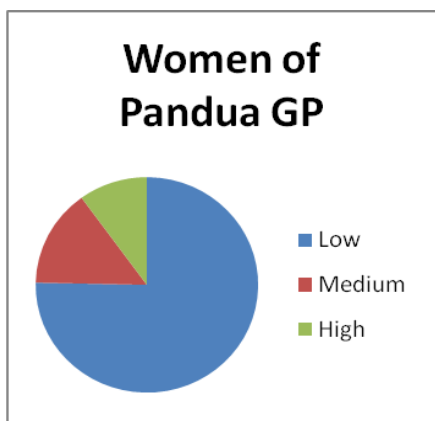
From the my study I have pointed out that 75.33 percent women of Pandua GP and 60 percent women of Bairgachhi-I GP have less interest in politics. In this context they have low interest of participation in the decision making process of politics. 14.66 percent women of Pandua GP have medium interest of participation in political decisions. On the other hand 25 percent women of Bairgachhi-I GP have medium interest of participation in politics. Only 10 percent women of Pandua GP and 14.66 percent women of Bairgachhi-I GP have high interest to participate in the decision making process of politics. They are aware about the political culture and political decision making processes. This analysis shows the rate of interest of political participation in two gram panchayats.

**Interest in politics of general women (comparative study between Pandua and Bairgachhi - I)**

**Table no. 3.1**

Interest in politics	Women of Pandua GP	Percentage	Women of Bairgachhi-I GP	Percentage
Low	113	75.33%	90	60%
Medium	22	14.66%	38	25.33%
High	15	10%	22	14.66%
Total	150	100	150	100

(From Field survey)



On the other hand I tried to point out the rate of interest of political participation on the basis of age. It has been pointed out from my study that younger women would have a higher interest of participation in political decision making process. 50.65 percent women of Pandua and 51.33 percent women of Bargachhi-I GP have low interest in politics and other political activities. 30 percent women of Pandua and 32.33 percent women participate have medium interest of participate in the decision making process. In pandua gram panchayat 8.66 percent women have low interest in politics between the age of

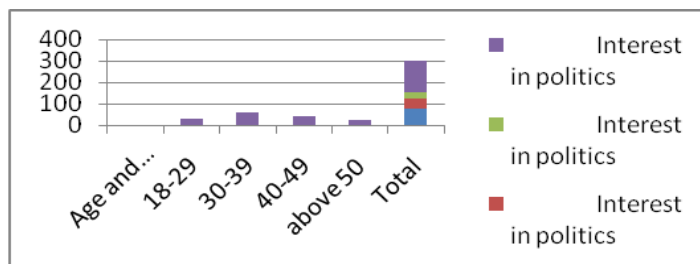
18 years to 29 years while 8.66 percent women were interested to participate in the political decision making process between the age of 30 to 39 years. They have the highest level of interest for the participation. In the case of Baigachhi-I only 5.33% women have lowest interest in politics between the age of 18 to 29 years age whereas 10 percent women have highest interest in the political participation and other related works of politics between the age of 30 to 39 years (Table no. 3.2, 3.3 and Figure 3.2, 3.3).

**Age and interest in politics: Pandua GP**

**Table no. 3.2**

Interest in politics				
Age and interest in politics	Low	Medium	High	Number
18-29	13(8.66%)	11 (7.33%)	5(3.33%)	29
30-39	35 (23.33%)	8 (5.33%)	13 (8.66%)	56
40-49	19 (12.66%)	15 (10%)	6 (4%)	40
Above 50	9(6%)	11 (7.33%)	5(3.33%)	25
<b>Total</b>	<b>76 (50.65%)</b>	<b>45 (30%)</b>	<b>29 (19.33%)</b>	<b>150</b>

(From Field survey)



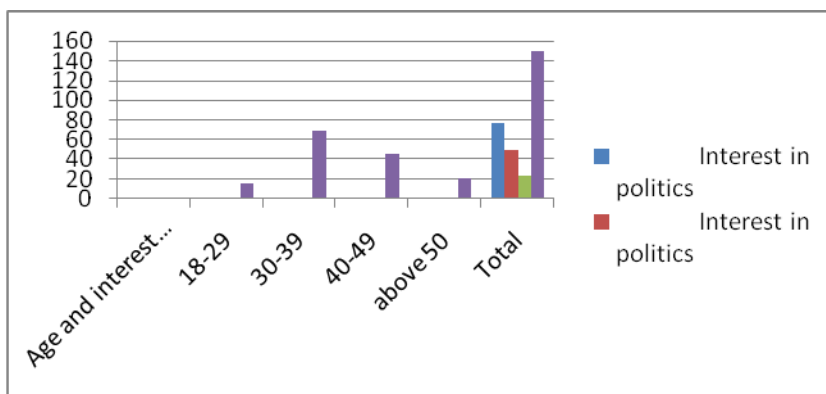
**Figure: 3.2**

**Age and interest in politics: Baigachhi-I GP**

**Table no. 3.3**

Interest in politics				
Age in interest in politics	Low	Medium	High	Number
18-29	8 (5.33%)	5 (3.33%)	2 (1.33%)	15
30-39	33 (22%)	21 (14%)	15 (10%)	69
40-49	24 (16%)	16 (10.66%)	5 (3.33%)	45
Above 50	12 (8%)	7 (4.66%)	2 (1.33%)	21
<b>Total</b>	<b>77</b>	<b>49 (32.66)</b>	<b>24</b>	<b>150</b>

(From Field survey)



**Figure: 3.3**

In case of Panadua gram panchayat the political participation has been determined by the nature of family. The nature of family determines the political activities of women. 8 percent of joint family women, 2.66 percent of extended family and 46 percent of nuclear family women have low interest in political decision, while 4.66 percent of joint family women, 1.33 percent of extended family women and 21.33 percent of nuclear family women have medium interest in politics and finally, 2 percent of joint family women, .66 percent of extended family women and 13.33 percent of nuclear family

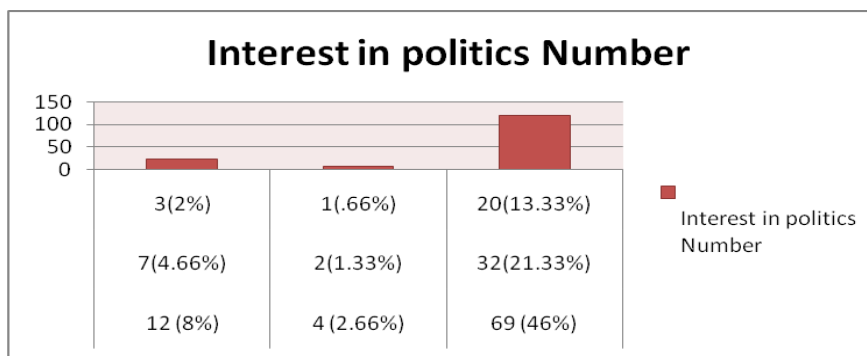
women have high interest in politics of the Pandua GP (Table no.3.4 and Figure 3.4). 8 percent of joint family women, 3.33 percent extended family and 43.33 percent nuclear family women have low interest in politics, while 4.66 percent of joint family women, 2 percent extended family women and 23.33 percent of nuclear family women have medium interest in politics and finally, 2.66 percent of joint family women, 1.33 percent of extended family women and 11.33 percent of nuclear family women have high interest in politics of the Bairgachhi-I GP (Table no.3.5 and Figure 3.5).

**Nature of family and interest in politics: Pandua GP**

**Table no. 3.4**

Interest in politics				
Nature of family	Low	Medium	High	Number
Joint	12 (8%)	7(4.66%)	3(2%)	22
Extended	4 (2.66%)	2(1.33%)	1(.66%)	7
Nuclear	69 (46%)	32(21.33%)	20(13.33%)	121
<b>Total</b>	<b>85</b>	<b>41</b>	<b>24</b>	<b>150</b>

(From Field survey)



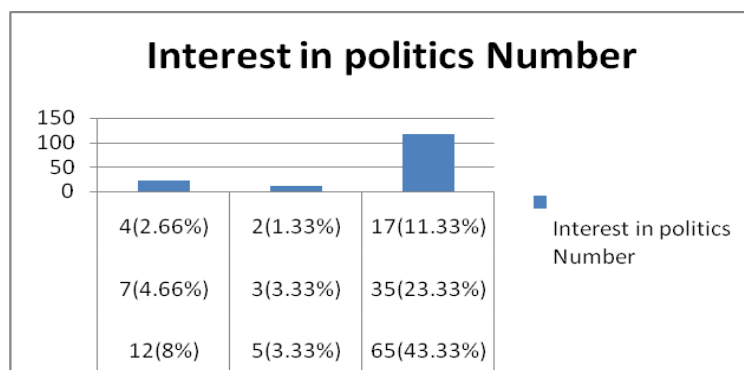
**Figure: 3.4**

**Nature of family and interest in politics: Bairgachhi-I GP**

**Table no. 3.5**

Interest in politics				
Nature of family	Low	Medium	High	Number
Joint	12(8%)	7(4.66%)	4(2.66%)	23
Extended	5(3.33%)	3(3.33%)	2(1.33%)	10
Nuclear	65(43.33%)	35(23.33%)	17(11.33%)	117
<b>Total</b>	<b>82</b>	<b>45</b>	<b>23</b>	<b>150</b>

(From Field survey)



**Figure: 3.5**

In order to examine how the nature of family determine the political orientations and motivations in politics. In this context the marital status has been considered as an important role for the same. 37.33 percent of married women are not interested in the political decisions and they have low interest in this manner. There are 16.66 percent unmarried women are not

interested in the politics and political decisions. They have low interest in politics due to the lake of political awareness. On the other hand 17.33 percent of married women and 21 percent of unmarried women have medium interest in politics and finally, 9.33 percent of married women and 5.33 percent of unmarried women have high interest in politics of the Pandua GP (Table

no.3.6 and Figure: 3.6). 50 percent of married women and 11.33 percent unmarried women have low interest in politics, while 22 percent of married women and 9.33 percent of unmarried women have medium interest in politics and finally,

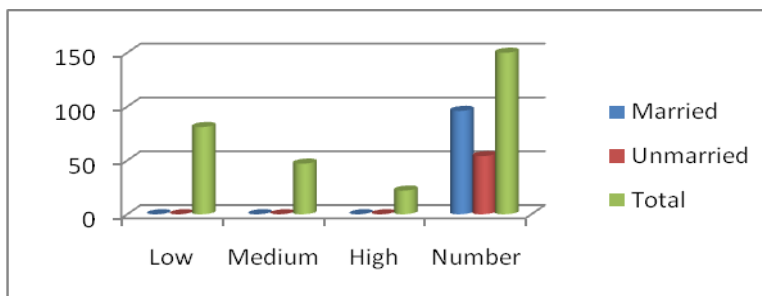
6 percent of married women and 1.33 percent of unmarried women have high interest in politics of the Bairgachhi-I GP (Table no.3.7 and Figure:3.7).

**Marital status and interest in politics: Pandua GP**

**Table no. 3.6**

Interest in politics				
Marital status	Low	Medium	High	Number
Married	56(37.33%)	26(17.33%)	14(9.33%)	96
Unmarried	25(16.66%)	21(14%)	8(5.33%)	54
<b>Total</b>	<b>81</b>	<b>47</b>	<b>22</b>	<b>150</b>

(From Field survey)



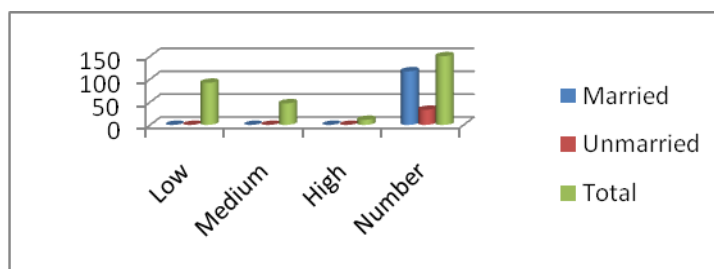
**Figure: 3.6**

**Marital status and interest in politics: Bairgachhi-I GP**

**Table no. 3.7**

Interest in politics				
Marital status	Low	Medium	High	Number
Married	75(50%)	33(22%)	9(6%)	117
Unmarried	17(11.33%)	14(9.33%)	2(1.33%)	33
<b>Total</b>	<b>92</b>	<b>47</b>	<b>11</b>	<b>150</b>

(From Field survey)



**Figure: 3.7**

Education is an important issue of capability of people. It is playing the positive role of participation in the decision making process and other activities. In case of Panadua gram panchayat the nature of education determine the political participation and orientations. The political culture and orientations has been determined by education. Education determines the political activities of women. There are 37.33 percent of no-formal

education of women of Pandua GP and 16 percent of no formal education of women of Bairgachhi-I GP has low interest in political participation. And 6.66 percent of no formal education of women of Pandua GP and 4 percent of no formal education and primary education of women of Bairgachhi-I GP have high interest in politics and political decision making process (Table no. 3.8, 3.9 and Figure: 3.8, 3.9).

**Education and interest in politics: Pandua GP**

**Table no. 3.8**

Interest in politics				
Education	Low	Medium	High	Number
No formal education	56(37.33%)	24(16%)	10(6.66%)	90
Primary education	19(12.66%)	15(10%)	5(3.33%)	39
Secondary education	5(3.33%)	6(4%)	1(.66%)	12
Under Graduate	3(2%)	2(1.33%)	1(.66%)	6
Post Graduate	--	1(.66%)	2(1.33%)	3
<b>Total</b>	<b>83</b>	<b>48</b>	<b>19</b>	<b>150</b>

(From Field survey)

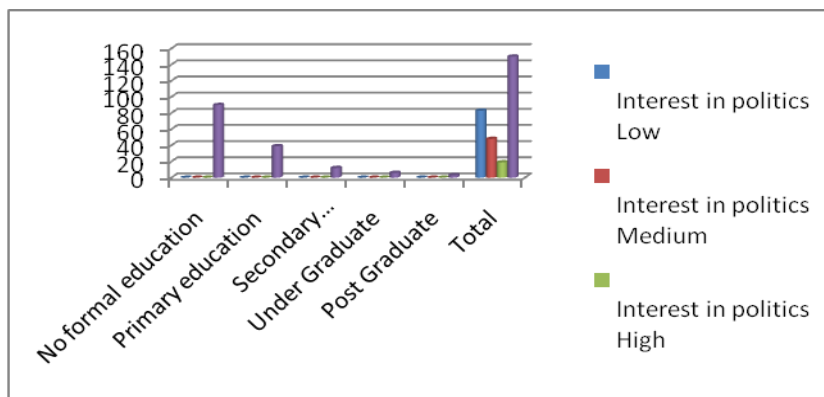


Figure: 3.8

Education and interest in politics: Bairstachhi-I GP

Table no. 3.9

Interest in politics				
Education	Low	Medium	High	Number
No formal education	24(16%)	18(12%)	6(4%)	48
Primary education	19(12.66%)	17(11.33%)	6(4%)	42
Secondary education	14(9.33%)	13(8.66%)	3(2%)	30
Under graduate	11(7.33%)	8(5.33%)	5(3.33%)	24
Post graduate	3(2%)	2(1.33%)	1(.66%)	6
<b>Total</b>	<b>71</b>	<b>58</b>	<b>21</b>	<b>150</b>

(From Field survey)

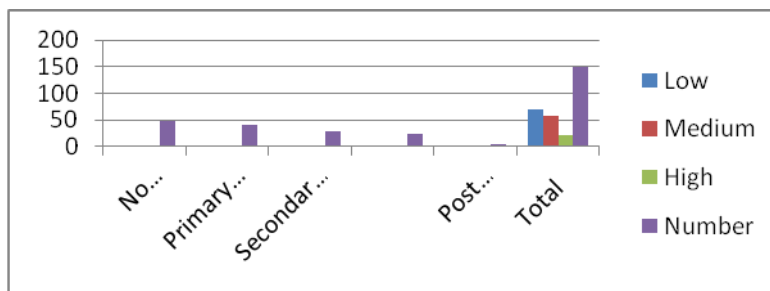


Figure: 3.9

Occupation of a respondent is an equally important parameter for the participation. It influences and determines the respondent's in the political participation. Out of the 150 women, there is 1.33% service, 6% business, 28% agriculture, 12.66% homemaker in Pandua gram panchayat. 1.33% service, 4.66% businesses, 18% agriculture, 11.33% homemaker women are medium interest in politics. Women 1.33% service, 2.66% business, 9.33% agriculture, 3.33% homemaker women are high interest in politics (Table no.3.10 and Figure 3.10). Others

150 women of Bairstachhi-I GP, 2% service, 3.33% business, 32% agriculture 12.66% homemaker are low interest in politics. 1.33% service, 4.66% business, 22% agriculture, 7.33% homemaker women are medium interest in politics. 1.33% service, 4% business, 6% agriculture, 3.33% homemaker women are high interest in politics. Occupation minimum difference of the two panchayat occupation is business category (10.67%) and minimum difference is two Gram Panchayat (Table no 3.11 and Figure 3.11)

Occupation and interest in politics: Pandua GP

Table no. 3.10

Interest in politics				
Occupation	Low	Medium	High	Number
Service	2(1.33%)	2(1.33%)	2(1.33%)	6
Business	9(6%)	7(4.66%)	4(2.66%)	30
Agriculture	42(28%)	27(18%)	14(9.33%)	83
Homemaker	19(12.66%)	17(11.33%)	5(3.33%)	41
<b>Total</b>	<b>72</b>	<b>53</b>	<b>25</b>	<b>150</b>

(From Field survey)

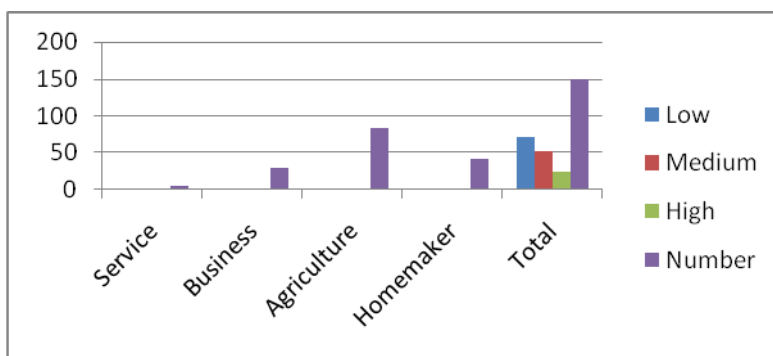


Figure: 3.10

Occupation and interest in politics: Baigachhi-I GP

Table no. 3.11

Interest in politics				
Occupation	Low	Medium	High	Number
Service	3(2%)	2(1.33%)	2(1.33%)	7
Business	5(3.33%)	7(4.66%)	6(4%)	18
Agriculture	48(32%)	33(22%)	9(6%)	90
Homemaker	19(12.66%)	11(7.33%)	5(3.33%)	35
<b>Total</b>	<b>75</b>	<b>42</b>	<b>22</b>	<b>150</b>

(From Field survey)

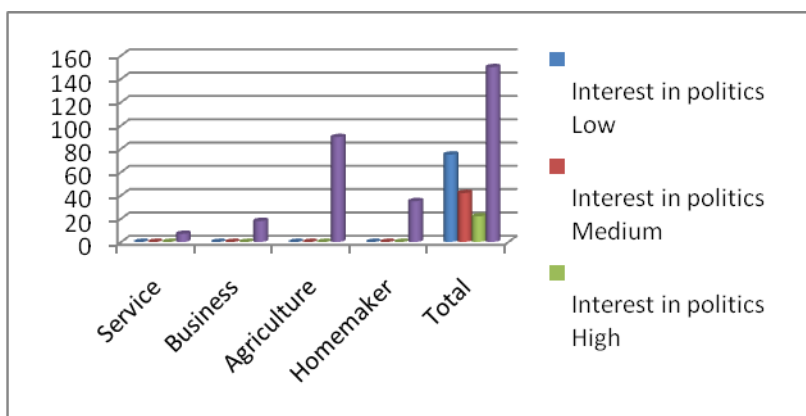


Figure: 3.11

There is an indicator of participation in politics. Engagement in association determines the political participation. 16.66 percent women of Pandua GP and 14.66 percent women of Baigachhi-I GP have engaged of association in low interest in politics, 11.33 percent women of Pandua GP and 12 percent women of Baigachhi-I GP have engaged of association in medium interest in politics and 8 percent women of Pandua GP and 4.66 percent women of Baigachhi-I GP

have engaged of association in high interest in politics. Others no association 31.33 percent women of Pandua GP and 38 percent women of Baigachhi-I GP have low interest in politics, 23.33 percent women of Pandua GP and 26.66 percent women of Baigachhi-I GP have medium interest in politics and 9.33 percent women of Pandua GP and 6 percent women of Baigachhi-I GP have high interest in politics (Table no. 3.12, 3.13 and Figure 3.12, 3.13).

Membership of associations and interest in politics: Pandua GP

Table no. 3.12

Interest in politics				
Member of association	Low	Medium	High	Number
Engaged of association	25(16.66%)	17(11.33%)	12(8%)	54
No association	47(31.33%)	35(23.33%)	14(9.33%)	96
<b>Total</b>	<b>72</b>	<b>52</b>	<b>26</b>	<b>150</b>

(From Field survey)

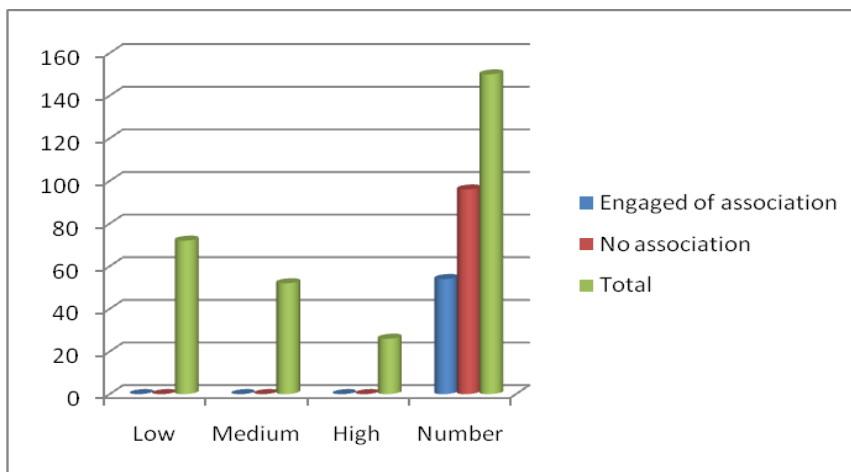


Figure: 3.12

**Membership of associations and interest in politics: Baigachhi-I GP**

**Table no. 3.13**

Interest in politics				
Member of association	Low	Medium	High	Number
Engaged of association	22(14.66%)	18(12%)	7(4.66%)	47
No association	57(38%)	37(26.66%)	9(6%)	103
<b>Total</b>	<b>79</b>	<b>55</b>	<b>16</b>	<b>150</b>

(From Field survey)

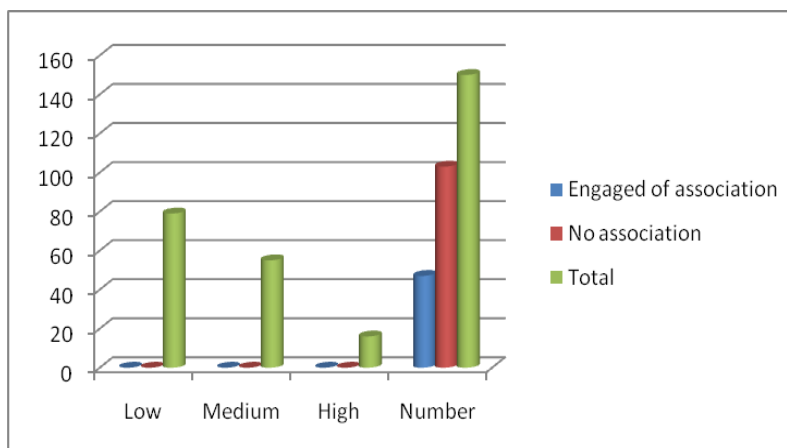


Figure: 3.13

Sense of political awareness determines the political science. In field survey there are 52 percent of general women and 10 percent women of GP members of Pandua GP and 54 percent of general women of Baigachhi-I GP who have sense of political efficacy. On the other hand 30 percent of general women and 30 percent women of GP member of Pandua GP,

32.66 percent of general women and 33.33 percent of GP member of Baigachhi-I GP have medium sense of political efficacy and 18 percent of general women and 60 percent of GP member of Pandua GP and 13.33 percent women of Baigachhi-I GP have high interest in politics. (Table no. 3.14).

**Sense of political efficacy of women GP members**

**Table no. 3.14**

Interest in politics				
GP members and general women	Low	Medium	High	Number
General women of Pandua	78(52%)	45(30%)	27(18%)	150
General women of Baigachhi-I	81(54%)	49(32.66%)	20(13.33%)	150
Women GP member of Pandua	1(19%)	3(30%)	6(60%)	10
Women GP member of Baigachhi-I	--	2(33.33%)	4(66.66%)	6

(From Field survey)

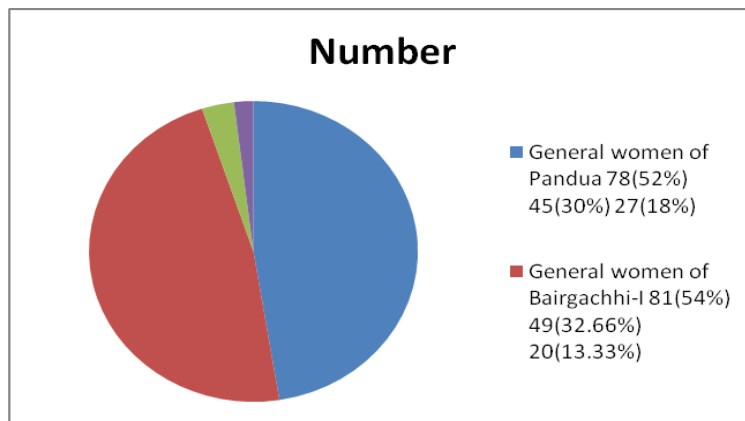


Figure: 3.14

I may be expected that younger women would have a higher degree of Sense political efficacy. 30 percent women and 33.33 percent women have high sense of political efficacy

quality of the two areas between Pandua GP and Baigachhi-I GP (Table no. 4.15, 4.16 and Figure 3.15, 3.16).

**Age and sense of political efficacy: Pandua GP**

**Table no 3.15**

Sense of political efficacy				
Age and sense	Low	Medium	High	Number
18-29	--	--	2(20%)	2
30-39	1(10%)	2(20%)	3(30%)	6
40-49	--	1(10%)	1(10%)	2
Above 50	--	--	--	-
<b>Total</b>	<b>1</b>	<b>3</b>	<b>6</b>	<b>10</b>

(From Field survey)

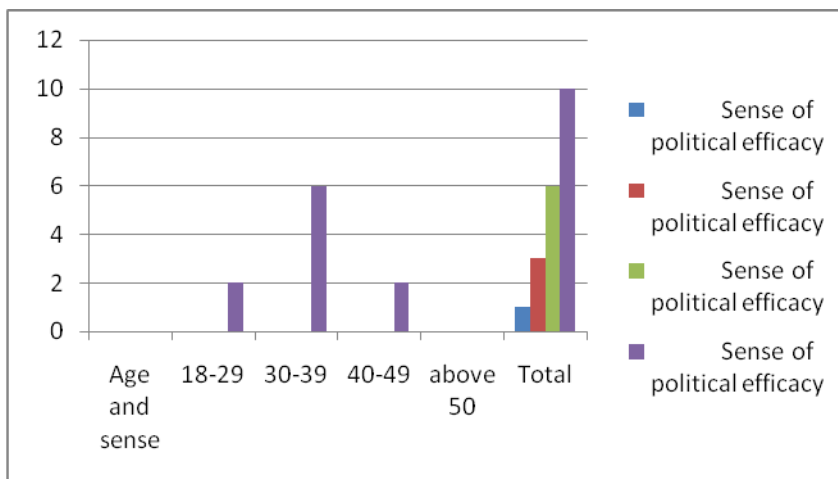


Figure: 3.15

**Age and sense of political efficacy: Baigachhi-I GP**

**Table no. 3.16**

Sense of political efficacy				
Age and sense	Low	Medium	High	Number
18-29	--	1(16.66%)	1(16.66%)	2
30-39	--	1(16.66%)	2(33.33%)	3
40-49	--	--	1(16.66%)	1
Above 50	--	--	--	-
<b>Total</b>	<b>--</b>	<b>2</b>	<b>4</b>	<b>16</b>

(From Field survey)

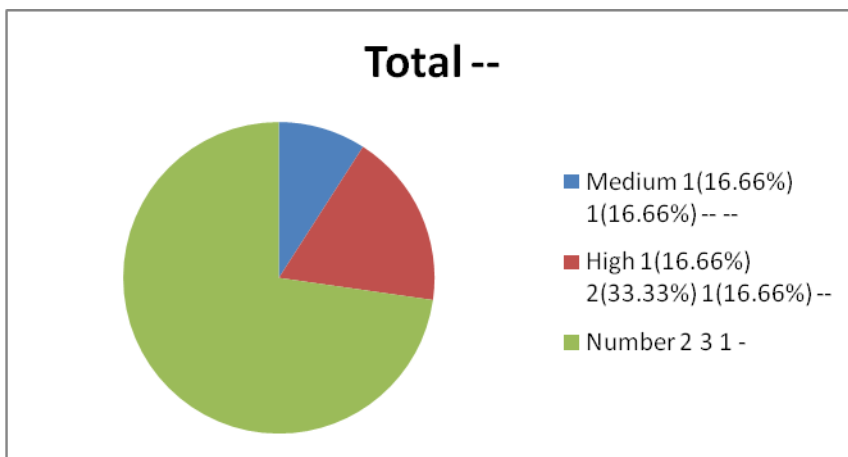


Figure: 3.16

In case of Married women members of Pandua GP 60 percent married women members are more interested in the sense of political efficacy. In the case of Bairgachhi-I GP 66.66 percent of married women member have high sense of political efficacy. They are interested in the political decision making process. Bairgachhi-I gram panchayat is in advance position

comparison with Pandua gram panchayat. 10 percent married women members have low sense of political efficacy, while married women members Bairgachhi-I GP not of them married women member low sense of political efficacy. (Table no.3.17, 3.18 and Figure 3.17, 3.18).

**Marital status and sense of political efficacy: Pandua GP**

Table no. 3.17

Sense of political efficacy				
Marital status	Low	Medium	High	Number
Married	1(10%)	3(30%)	6(60%)	10
Unmarried	-	-	-	-
<b>Total</b>	<b>1</b>	<b>3</b>	<b>6</b>	<b>10</b>

(From Field survey)

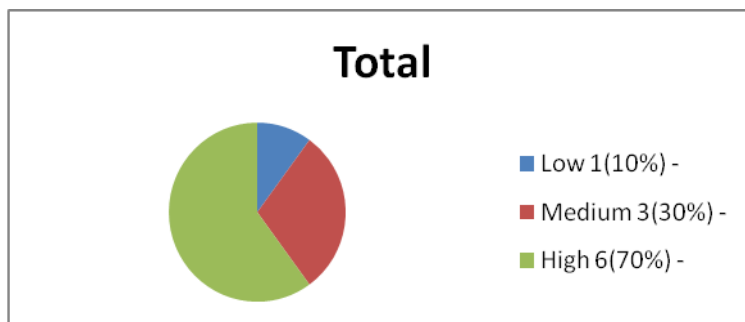


Figure: 3.17

**Marital status and sense of political efficacy: Bairgachhi-I GP**

Sense of political efficacy				
Marital status	Low	Medium	High	Number
Married	-	2(33.33%)	4(66.66%)	6
Unmarried	-	-	-	-
<b>Total</b>	<b>-</b>	<b>2</b>	<b>4</b>	<b>6</b>

(From Field survey)

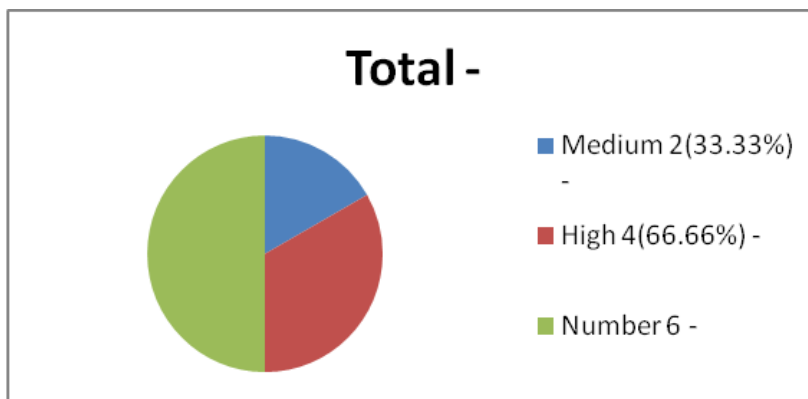


Figure: 3.18

Education is important issue to be positive role related to women participation. All the levels of education general women members have high sense of political efficacy between

Pandua and Bairgachhi-I GP. No formal education of general womens has low sense of political efficacy of the two areas (Table no. 3.19, 3.20 and Figure 3.19, 3.20).

**Education and sense of political efficacy: Pandua GP**

**Table no. 3.19**

Sense of political efficacy				
Education	Low	Medium	High	Number
No formal education	-	-	-	-
Primary education	1(10%)	1(10%)	2(20%)	4
Secondary education	-	2(20%)	1(10%)	3
Under graduate	-	-	2(20%)	2
Post graduate	-	-	1(10%)	1
<b>Total</b>	<b>1</b>	<b>3</b>	<b>6</b>	<b>10</b>

(From Field survey)

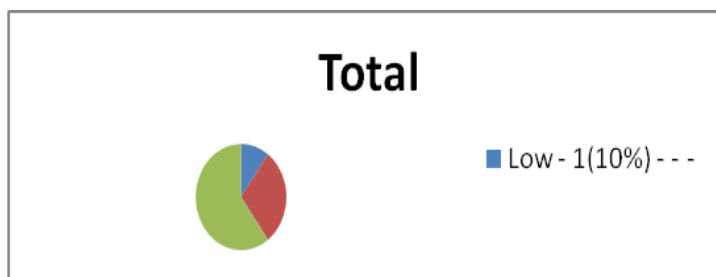


Figure: 3.19

**Education and sense of political efficacy: Bairgachhi-I GP**

**Table no. 3.20**

Sense of political efficacy				
Education	Low	Medium	High	Number
No formal education	-	-	-	-
Primary education	-	1(16.66%)	-	1
Secondary education	-	-	2(33.33%)	2
Under graduate	-	1(16.66%)	2(33.33%)	3
Post graduate	-	-	-	-
<b>Total</b>	<b>-</b>	<b>2</b>	<b>4</b>	<b>16</b>

(From Field survey)

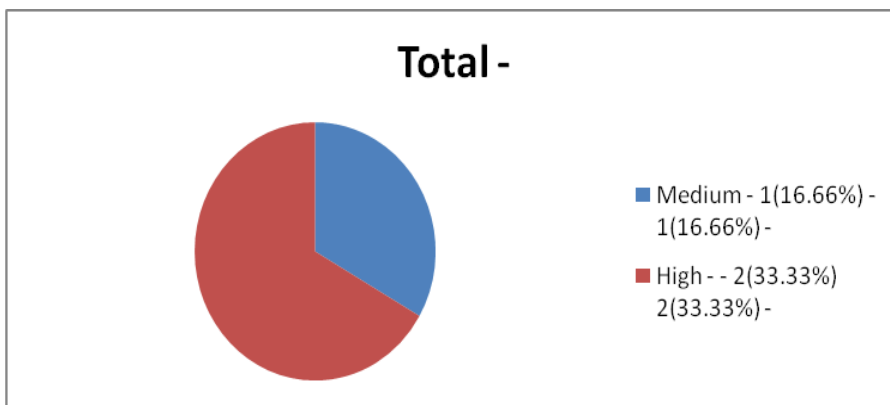


Figure: 3.20

10 percent women member of Pandua GP have engaged of association and Bairgachhi-I GP women members have not association in low sense of political efficacy. No association, 40 percent women member of Pandua GP and 50 percent

women member of Bairgachhi-I GP have high sense of political efficacy and 20 percent women of Pandua GP and 16.66 percent women member of Bairgachhi-I GP have engaged high sense of political efficacy (Table no. 3.21, 3.22 and 3.22, 3.22).

**Membership of association and sense of political efficacy: Pandua GP**  
Table no.3.21

Sense of political efficacy				
Member of association	Low	Medium	High	Number
Engaged of association	1(10%)	1(10%)	2(20%)	4
No association	0	2(20%)	4(40%)	6
<b>Total</b>	<b>1</b>	<b>3</b>	<b>6</b>	<b>10</b>

(From Field survey)

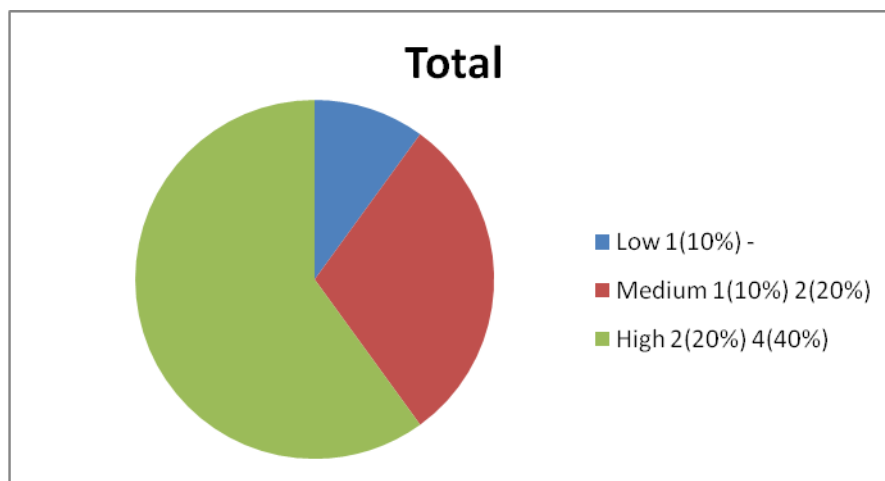


Figure: 3.21

**Membership of association and sense of political efficacy: Bairgachhi-I GP**  
Table no. 3.22

Sense of political efficacy				
Member of association	Low	Medium	High	Number
Engaged of association	0	1(16.66%)	1(16.66%)	2
No association	0	1(16.66%)	3(50%)	4
<b>Total</b>	<b>0</b>	<b>2</b>	<b>4</b>	<b>6</b>

(From Field survey)

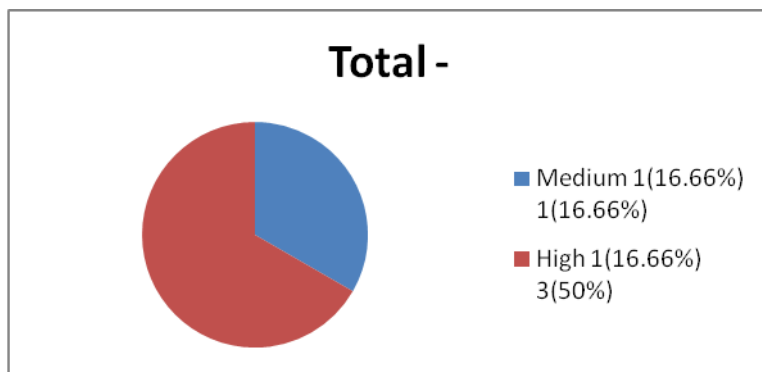


Figure: 3.22

Attraction the party of a GP member is a maximum medium nature of the two Panchayat (Table no 3.23 and Figure 3.23).

Attraction the party  
Table no. 3.23

Attraction the politics	Women of Pandua GP	Percentage	Women of Baigachhi-I GP	Percentage
Very strong	12	8%	8	5.33%
Strong	25	16.66%	19	12.66%
Medium	113	75.33%	123	82%
<b>Total</b>	<b>150</b>	<b>100</b>	<b>150</b>	<b>100</b>

(From Field survey)

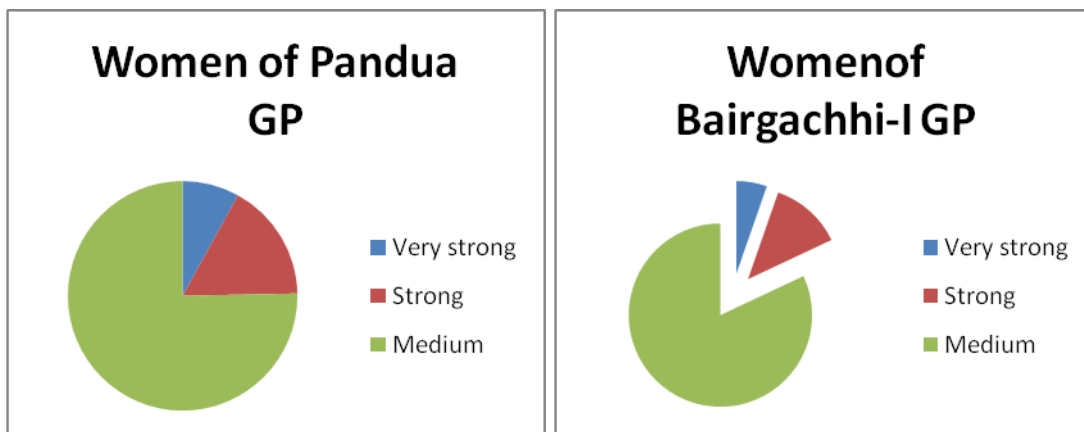


Figure: 3.23

Maximum 60% and 50% women GP member are entered into politics with some pressure husband or political party between Pandua GP and Baigachhi-I GP. 20 % and 16.66% women members are self-interest, 10% and 16.66% women

members are family heritage and 10% and 16.66% women members are favourable environment for participate in politics of the two Panchayat (Table no 3.24 and Figure 3.24).

Factor women enter into politics  
Table no. 3.24

Women in politics	Women of Pandua GP	Percentage	Women of Baigachhi-I GP	Percentage
Favorable environment	1	10%	1	16.66%
Family heritage	1	10%	1	16.66%
Personal interest	2	20%	1	16.66%
Under some pressure	6	60%	3	50%
<b>Total</b>	<b>10</b>	<b>100</b>	<b>6</b>	<b>100</b>

(From Field survey)

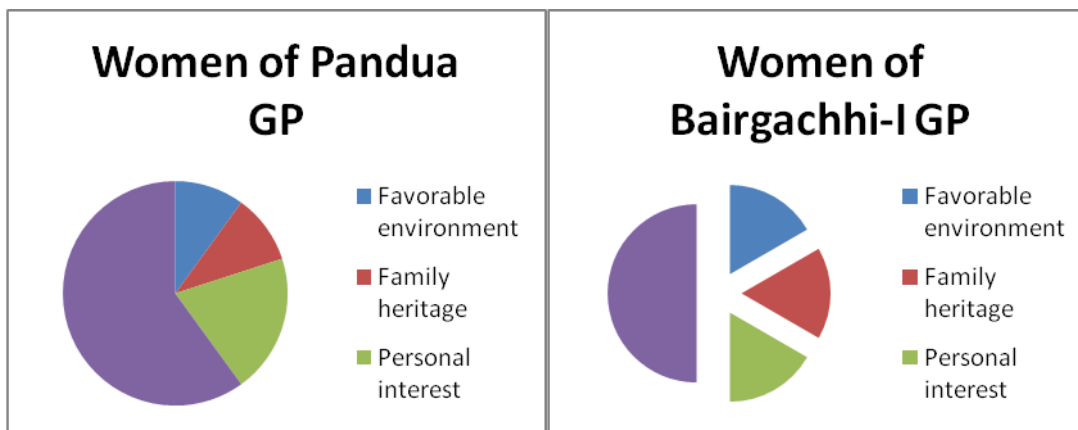


Figure: 3.24

Maximum 60% and 50% women members are positive attitude of the political party family (Table no 3.25 and Figure 3.26).

Family's attitude  
Table no. 3.25

Family attitude	Women of Pandua GP	Percentage	Women of Bairgachhi-I GP	Percentage
Positive	6	60%	3	50%
In between positive and negative	2	20%	2	33.33%
Negative	0	0	0	0
Indifferent	2	20%	1	16.66%
<b>Total</b>	<b>10</b>	<b>100</b>	<b>6</b>	<b>100</b>

(From Field survey)

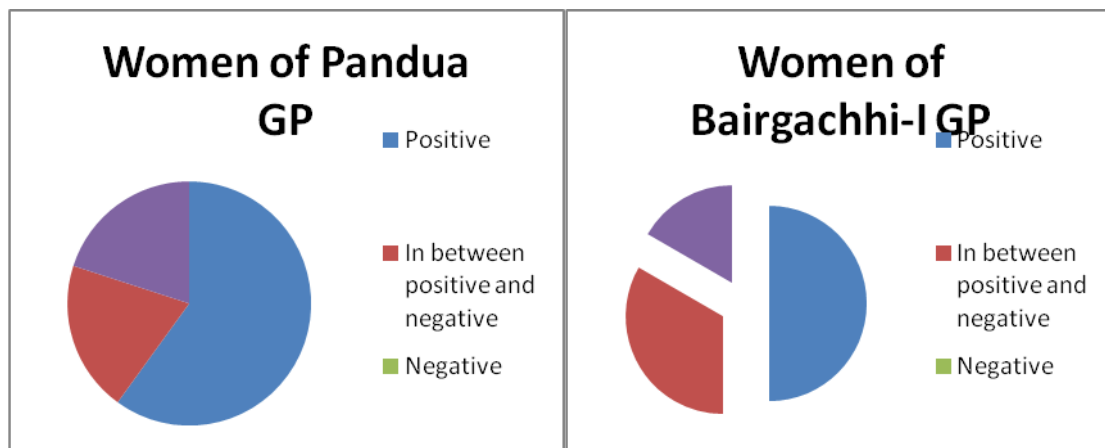


Figure: 3.25

50% political party are normal behave of the women members and others 50% political party are good and very

good behaviour of the women members of the two Panchayat (Table no 3.26 and Figure 3.26).

Attitude of political party  
Table no. 3.26

Attitude of political	Women of Pandua GP	Percentage	Women of Bairgachhi-I GP	Percentage
Normal	5	50%	3	50%
Good	3	30%	1	16.66
Very good	2	20%	2	33.33%
<b>Total</b>	<b>10</b>	<b>100</b>	<b>6</b>	<b>100</b>

(From Field survey)

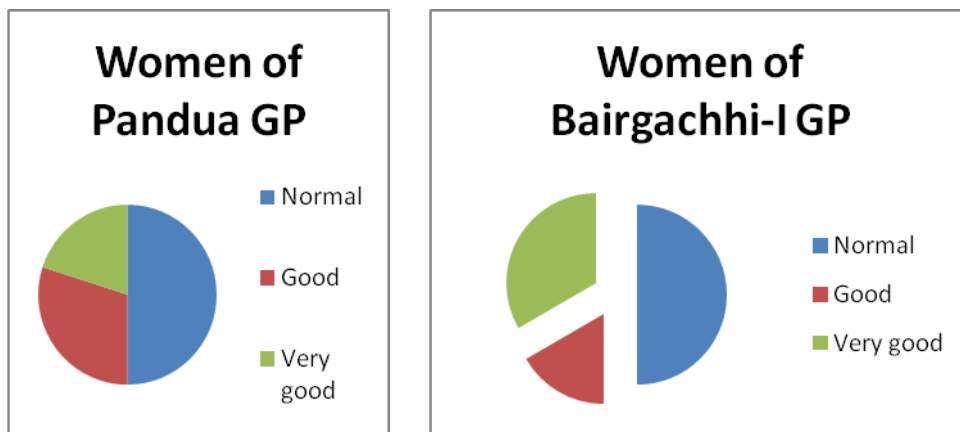


Figure: 2.26

Present position of the GP women members one member is Pradhan and one member is Upo-Prodhan and others members are only GP members of the Bairgachhi-I GP. All women

members are only GP members of the Pandua Gram Panchayat (Table no 3.27 and Figure 3.27).

**Present position and status of women GP member**

Table no. 3.27

Position	Women of Pandua GP	Percentage	Women of Bairgachhi-I GP	Percentage
Prodhan	-	-	1	16.66%
Upo-Prodhan	-	-	1	16.66%
Only GP member	10	100%	4	66.66%
<b>Total</b>	<b>10</b>	<b>100</b>	<b>6</b>	<b>100</b>

(From Field survey)

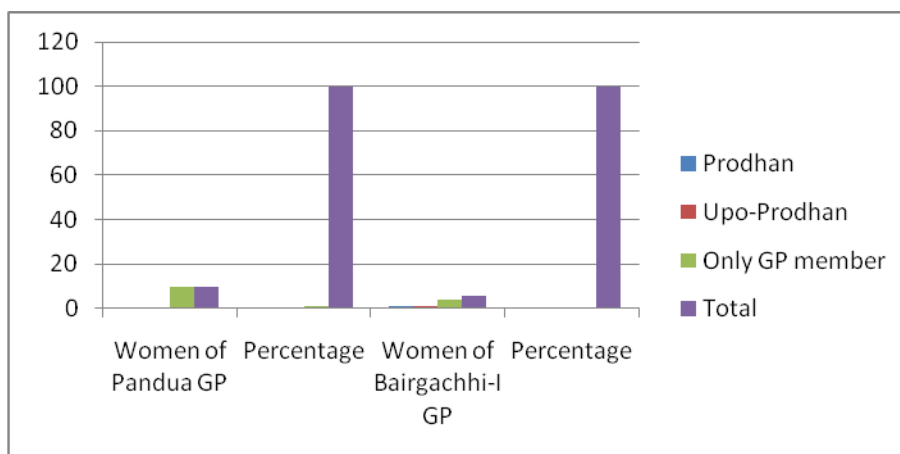


Figure: 3.27

**CONCLUSION**

- a) Both in Pandua GP and Bairgachhi-I area the percentage of younger women members are more interested in the political participation than the older women members.
- b) In Pandua area there are Hindu, Muslim and Christian women members but Hindu women members are majority in number than Muslim and Christian women members. In Bairgachhi-I area all the respondents belonged to Hindu and Muslim community and there is no Christian woman member. Muslim women members are in dominant position than Hindu women members of

- Bairgachhi-I GP area. So, the dominance of particular religion does not reflect the population composition in the two Panchayat areas.
- c) It is apparent from the study that both in Pandua and Bairgachhi-I local self government women members are coming from various castes but majority of them belong to the General caste and Schedule Caste. From this result we can infer that women members from General category and Schedule Caste category are majority position in comparison to women members of other

- categories in local self government of the Pandua GP and Bairgachhi-I GP.
- d) It is evident from the study that there is no illiterate woman member of the two GP in Gazole Block. In Pandua GP women members belonged to all level of education i.e., from class one to primary education. Bairgachhi-I GP belonged to all level women members education i.e., from class one to primary level education. Although there is no illiterate women members of two GP but there is no difference in the educational level of Pandua GP and Bairgachhi-I GP women members.
- e) Both in Pandua and Bairgachhi-I majority of women members are homemaker. Their education majority of them are not engaged in any gainful employment and association.
- f) The study reveals that both in Pandua and Bairgachhi-I majority of respondents belong to the yearly income category of Rs. 80000-99000 only. Majority of respondents belong to monthly income category of Rs. 7000-8000, this does not mean that they are engaged in any unprofitable employment.
- g) It is evident from the study that in Pandua and Bairgachhi-I GP majority of women members are from those families which do not have normal financial condition. From this result we can say that in both Panchayat sound financial condition of family plays a nominal role in women's election to local bodies. The study reveals that both in Pandua and Bairgachhi-I nuclear family system provide a favorable condition for women's election to local self bodies.
- h) The findings of the study show that both in Pandua and Bairgachhi-I GP, only a small percentage of respondents are heads of the family and majority of respondents are ordinary members of the family.
- i) Majority of respondents are married and the percentage of unmarried women members are very low. This indicates that in both local self government of Pandua and Bairgachhi-I married women members are in a dominant position than unmarried women members.
- j) Both in both Gram Panchayat area political parties are very much active and playing an important role in the local bodies. In terms of political party affiliation of the members, we find majority of them belong to CPIM followed by Indian National Congress and Trinomul Congress. This indicates that national political parties are playing a dominant role in the local bodies of study area.
- k) It is evident from the study that majority of women family members have political party affiliation. This indicates that political background of family members provides a favorable atmosphere for women's election in grass root level.

## REFERENCES

- [1] Barber, B. Strong "Democracy: Participatory Politics for a New Age". University of California Press, Los Angeles, 1984.
- [2] Ghosh, Jayasri, "Political Participation of Women in West Bengal: A Study", Progressive Publishers, 37A, College Street, Kolkata-73, July, 2000.
- [3] Kaur, M., "Role of Women in the Freedom Movement (1857-1947)", Sterling, Delhi, 1968, p.175.
- [4] Kumari, Ranjana, "Women Parliamentaries, Haranand Publications", New Delhi, 1994.
- [5] Pateman, 1970; Barber, 1984; C. Pateman, "Participation and Democratic Theory", Cambridge University Press, New York, United States, 1970.
- [6] Palmer, N.D. "Election and Political Development in India", Vikas, Delhi, pp. 59-61.
- [7] Rahman, Khalilur, "Women Empowerment through Decentralized Governance: A Study", Mitram, 73A, College Street, Kolkata-73, July, 2012.
- [8] Shapiro Weitz and Winters Rebecca and S. Matthew, "Political Participation and Quality of Life, Research Development, Inter-American Development Bank", 2008.
- [9] Equal Participation of Women and Men in Decision-Making Processes, with Particular Emphasis on Political Participation and Leadership : Report of the Expert Group Meeting, Addis-Ababa, Ethiopia, 24-27 October 2005, United Nations Division for the Advancement of Women (DAW), Department of Economic and Social Affairs (DESA) , Economic Commission for Africa (ECA) , Inter-Parliamentary Union (IPU) New York, 6-8.
- [10] 'Women Hold 20% of World's Political Power, Report Says', Lindsey Rupp, <http://www.bloomberg.com/news/2012-10-24/women-hold-20-of-world-s-political-power-report-says.html> Retrieved 4.6.12.
- [11] Yvonne, Roberts, 'Women losing ground in Positions of Power, report reveals' [http://www.Guardian.co.uk/politics/2013/Feb./24/women-losing-positions power-report](http://www.Guardian.co.uk/politics/2013/Feb./24/women-losing-positions-power-report), Retrieved 12.6.12.